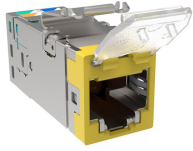


# 2153365-8 | SLX-DC-6AS-YL



SL-Series Modular Jack, RJ45, Cat6A Shielded, with Dust Cover, Yellow

## OBSOLETE

### Replaced By:

2153365-YL  
SLX-DC-6AS-YL

SL-Series Modular Jack, RJ45, Cat6A Shielded, with Dust Cover, Yellow

## Product Classification

|                              |   |
|------------------------------|---|
| <b>Regional Availability</b> | Asia   Australia/New Zealand   EMEA   Latin America |
| <b>Portfolio</b>             | NETCONNECT®   |
| <b>Product Type</b>          | Modular jack  |
| <b>Product Series</b>        | SLX Series  |

## General Specifications

|  |   |
|--|---|
| <b>ANSI/TIA Category</b>               | 6A  |
| <b>Cable Type</b>                      | Shielded                                  |
| <b>Color</b>                           | Yellow                                    |
| <b>Conductor Type</b>                  | Solid   Stranded                          |
| <b>Integrated Dust Cover Type</b>      | Hinged                                    |
| <b>Mounting</b>                        | SL Series faceplates and panels           |
| <b>Outlet Type</b>                     | Standard                                  |
| <b>Termination Punchdowns, minimum</b> | 5 times                                   |
| <b>Termination Tool</b>                | SL Termination tool                       |
| <b>Termination Type</b>                | IDC                                       |
| <b>Transmission Standards</b>          | ANSI/TIA-568-C.2   ISO/IEC 11801 Class EA |
| <b>Wiring</b>                          | T568A   T568B                             |

## Dimensions

|                                  |                                   |
|----------------------------------|-----------------------------------|
| <b>Panel Cutout, recommended</b> | 14.78 x 20.07 mm (0.58 x 0.79 in) |
|----------------------------------|-----------------------------------|

# 2153365-8 | SLX-DC-6AS-YL

|   |                     |
|---|---------------------|
| <b>Panel Thickness, recommended</b>                     | 1.6 mm   0.063 in   |
| <b>Height</b>   | 16.13 mm   0.635 in |
| <b>Width</b>  | 14.44 mm   0.569 in |
| <b>Depth</b>  | 36.8 mm   1.449 in  |
| <b>Compatible Cable Diameter, maximum</b>               | 8.5 mm   0.335 in   |
| <b>Compatible Insulated Conductor Diameter, maximum</b> | 1.6 mm   0.063 in   |
| <b>Contact Plating Thickness</b>                        | 1.27 µm             |
| <b>Compatible Conductor Gauge, solid</b>                | 26–22 AWG           |
| <b>Compatible Conductor Gauge, stranded</b>             | 26–24 AWG           |

## Electrical Specifications

|                        |  |
|------------------------|--|
| <b>Remote Powering</b> | Fully supports the safe delivery of power over LAN cabling described by IEEE 802.3bt (Type 4) and complies with the unmating under electrical load requirements prescribed by IEC 60512-99-002 |
| <b>PoE Durability</b>  | Supports IEEE 802.3bt Type 4 (90 W) applications greater than 3000 plug to jack mating cycles  |

## Material Specifications

|                                 |                       |
|---------------------------------|-----------------------|
| <b>Contact Base Material</b>    | Beryllium copper      |
| <b>Contact Plating Material</b> | Gold                  |
| <b>Material Type</b>            | Polycarbonate   Zamak |

## Mechanical Specifications

|                                   |                                |
|-----------------------------------|--------------------------------|
| <b>Plug to Jack Mating Cycles</b> | Complies to IEC 60603-7 series |
|-----------------------------------|--------------------------------|

## Environmental Specifications

|                              |                                      |
|------------------------------|--------------------------------------|
| <b>Operating Temperature</b> | -10 °C to +60 °C (+14 °F to +140 °F) |
| <b>Flammability Rating</b>   | UL 94 V-0                            |

## Packaging and Weights

|                           |           |
|---------------------------|-----------|
| <b>Packaging Material</b> | Standard  |
| <b>Packaging quantity</b> | 24        |
| <b>Packaging Type</b>     | Bag   Box |

## Regulatory Compliance/Certifications

| Agency | Classification |
|--------|----------------|
|--------|----------------|

# 2153365-8 | SLX-DC-6AS-YL

---

|            |  |
|------------|--|
| CHINA-ROHS | Below maximum concentration value  |
| RCM        | Compliant to electrical safety & telecommunications requirements   |
| REACH-SVHC | Compliant as per SVHC revision on <a href="http://www.commscope.com/ProductCompliance">www.commscope.com/ProductCompliance</a> |
| ROHS       | Compliant  |
| UK-ROHS    | Compliant  |

