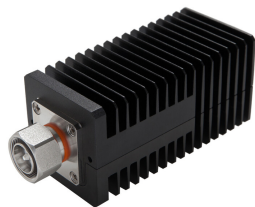


# T-50-UW-43-M

---



Termination Load, 0–6000 MHz

## Product Classification

**Regional Availability** Asia | Australia/New Zealand | EMEA | Latin America | North America

**Product Type** Termination Load

## General Specifications

**Device Type** Termination Load

**Application** Indoor/Outdoor

**Color** Black

**Inner Contact Plating** Silver

**Interface** 4.3-10 Male

**Outer Contact Plating** Trimetal

## Dimensions

**Height** 50 mm | 1.969 in

**Width** 50 mm | 1.969 in

**Length** 125 mm | 4.921 in

## Electrical Specifications

**Average Power, maximum** 50 W

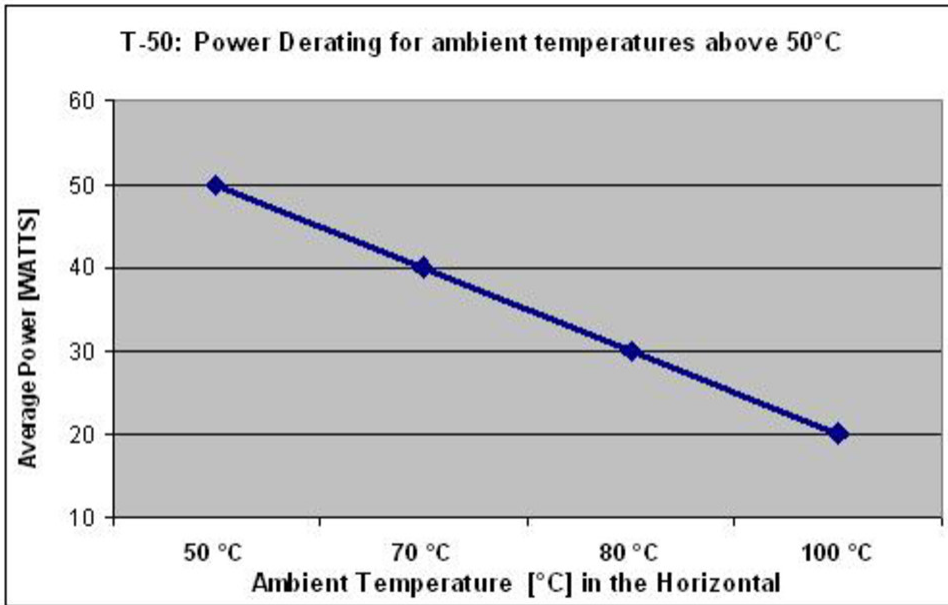
**Impedance** 50 ohm

**Operating Frequency Band** 0 – 6000 MHz

**VSWR** 1.2

## Derating Curve

# T-50-UW-43-M



## Environmental Specifications

<b>Operating Temperature</b>	-25 °C to +50 °C (-13 °F to +122 °F)
<b>Relative Humidity</b>	Up to 100%
<b>Ingress Protection Test Method</b>	IEC 60529:2001, IP65

## Packaging and Weights

<b>Height, packed</b>	58 mm   2.283 in
<b>Width, packed</b>	78 mm   3.071 in
<b>Length, packed</b>	158 mm   6.22 in
<b>Weight, gross</b>	0.42 kg   0.926 lb
<b>Weight, net</b>	0.37 kg   0.816 lb

## Regulatory Compliance/Certifications

<b>Agency</b>	<b>Classification</b>
CHINA-ROHS	Above maximum concentration value
ISO 9001:2015	Designed, manufactured and/or distributed under this quality management system
ROHS	Compliant/Exempted
UK-ROHS	Compliant/Exempted

# T-50-UW-43-M

---

