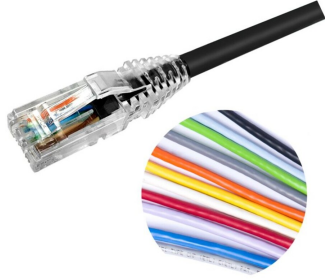


# NPC6AUVDB



## NPC RJ45 Patch Cord, category 6A, Unshielded, CM (PVC)

- High-performance patch cords exceeding industry standards supporting NETCONNECT channel specifications
- Standardized transparent, slim-line boots provides consistent patch cord appearance and supports highest density applications
- Colored clips are available to fit the transparent boot, eliminating the need of multiple colors for matching every jacket color
- Colored pull latch tabs are available for easier plug release handling from the modular jack

### OBSOLETE

This product was discontinued on: **March 4, 2022**

#### Replaced By:

NPC6AUZDB

NETCONNECT® Cat 6A U/UTP RJ45 Patch Cord, LSZH

## Product Classification

### Regional Availability

Asia | Australia/New Zealand | Latin America

### Portfolio

NETCONNECT®

### Product Type

Twisted pair patch cord

### Product Series

NPC

### Ordering Note

Cords < 1 m are valid elements for use in a channel or as an equipment interconnect but due to their limited length are not guaranteed to meet component compliance requirements that were developed to assess the quality of longer cords | Cords > 1 m are authorized for use in channels and are an effective standalone method used to connect active devices

## General Specifications

### ANSI/TIA Category

6A

### Cable Type

U/UTP (unshielded)

### Conductor Type

Solid

### Interface, Connector A

RJ45 plug

### Interface Feature, connector A

Standard

### Interface, Connector B

RJ45 plug

### Interface Feature, connector B

Standard

### Jacket Color

Black | Blue | Green | Orange | Red | Slate | White | Yellow

# NPC6AUVDB

|                               |                     |
|-------------------------------|---------------------|
| <b>Pairs, quantity</b>        | 4                   |
| <b>Transmission Standards</b> | IEEE 802.3bt Type 4 |
| <b>Wiring</b>                 | T568B               |

## Dimensions

|  |                    |
|--|--------------------|
| <b>Cable Assembly Length Range (m)</b>   | 1 – 30             |
| <b>Cable Assembly Length Range (ft)</b>  | 1 – 100            |
| <b>Cable Assembly Length Range (cm)</b>  | 15 – 999           |
| <b>Cable Assembly Length Range (in)</b>  | 6 – 999            |
| <b>Diameter Over Jacket</b>              | 7.24 mm   0.285 in |
| <b>Compatible Conductor Gauge, solid</b> | 24 AWG             |

## Ordering Tree

NPC       -  <sup>10</sup>  OR  <sup>12</sup>     <sup>11</sup>

### Jacket Color

|    |    |        |
|----|----|--------|
| 10 | BK | Black  |
|    | BL | Blue   |
|    | GN | Green  |
|    | GY | Gray   |
|    | OR | Orange |
|    | PK | Pink   |
|    | RD | Red    |
|    | VT | Violet |
|    | WT | White  |
|    | YL | Yellow |

### UOM

|    |   |            |
|----|---|------------|
| 11 | F | Foot       |
|    | M | Meter      |
|    | N | Inch       |
|    | C | Centimeter |

### Length

|    |     |
|----|-----|
| 12 | XXX |
|----|-----|

### Notes

- Cords > 1m are authorized for use in channels and are an effective standalone method used to connect active devices
- Cords < 1m are also valid elements for use in a channel or as an equipment interconnect but due to their limited length are not guaranteed to meet component compliance requirements that were developed to assess the quality of longer cords

## Material Specifications

|                            |              |
|----------------------------|--------------|
| <b>Insulation Material</b> | Polyethylene |
| <b>Material Type</b>       | PVC          |

## Mechanical Specifications

|                                     |           |
|-------------------------------------|-----------|
| <b>Plug Insertion Life, minimum</b> | 750 times |
|-------------------------------------|-----------|

## Environmental Specifications

|                              |                                     |
|------------------------------|-------------------------------------|
| <b>Operating Temperature</b> | -20 °C to +60 °C (-4 °F to +140 °F) |
|------------------------------|-------------------------------------|

# NPC6AUVDB

---

|                            |                           |
|----------------------------|---------------------------|
| <b>Relative Humidity</b>   | Up to 93%, non-condensing |
| <b>Environmental Space</b> | Non-plenum                |
| <b>Flammability Rating</b> | CM                        |
| <b>Safety Standard</b>     | UL 1863                   |

## Packaging and Weights

|                           |   |
|---------------------------|---|
| <b>Packaging quantity</b> | 1 |
|---------------------------|---|

## Included Products

- 2843018-3  
MP-6AU-Boot-71-1 – Integrated Boot and Pair Manager for MP-6AU, size 71, transparent
- 6-2843008-1  
MP-6AU-Plug-B-1 – Modular Plug, Category 6A/6, Unshielded, Cond Insulation OD - 0.79mm, 100 pcs