

QD-PCS-A125_A4-G



PCS Quad In-Band Diplexer GB125, A/ADBEFCG Bands with AISG/DC Sense

- Automatic dc switching with dc sense

OBSOLETE

This product was discontinued on: December 1, 2019

Product Classification

Product Type Diplexer

General Specifications

Application Indoor | Outdoor
AISG Carrier 2176 KHz \pm 100 ppm
Connector Interface 7-16 DIN Female
Connector Interface Style Medium neck

Dimensions

Height 465 mm | 18.307 in
Width 365 mm | 14.37 in
Depth 148 mm | 5.827 in
Ground Screw Diameter 8 mm | 0.315 in

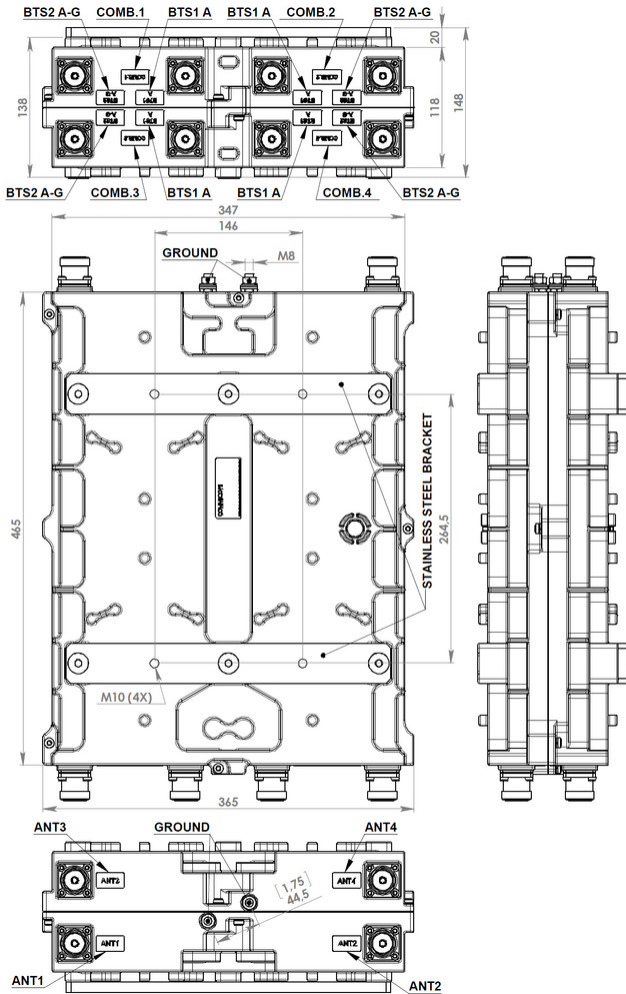
dc/AISG Auto-Sense Logic

DC & AISG Logic

BTS 1	BTS 2	ANT (DC/AISG)
>7V	<7V	BTS 1 -ANT Switch ON
		BTS 2 -ANT Switch OFF
<7V	>7V	BTS 1 -ANT Switch OFF
		BTS 2 -ANT Switch ON
>7V	>7V	BTS 1 -ANT Switch OFF
		BTS 2 -ANT Switch OFF

QD-PCS-A125_A4-G

Outline Drawing



Electrical Specifications

3rd Order IMD Test Method	Two +43 dBm carriers
3rd Order IMD, maximum	153 dBm
Lightning Surge Current	10 kA
Lightning Surge Current Waveform	8/20 waveform

Electrical Specifications, Rx (Uplink)

Frequency Band	1850.625 – 1855.625 MHz
Insertion Loss, maximum	1 dB
Insertion Loss, typical	0.8 dB

QD-PCS-A125_A4-G

Return Loss, minimum	18 dB
Isolation, minimum	28 dB
Isolation, minimum, specific	20 dB (± 500 KHz from band edge)

Electrical Specifications 2, Rx (Uplink)

Frequency Band	1856.875 – 1914.75 MHz
Isolation, minimum	28 dB
Isolation, minimum, specific	20 dB (± 500 KHz from band edge)
Insertion Loss, maximum	1 dB
Insertion Loss, typical	0.8 dB
Return Loss, minimum	18 dB

Electrical Specifications, Tx (Downlink)

Frequency Band	1930.625 – 1935.625 MHz
Isolation, minimum	28 dB
Isolation, minimum, specific	20 dB (± 500 KHz from band edge)
Input Power, PEP, maximum	3000 W
Total Group Delay, maximum	230 ns
Insertion Loss, maximum	1 dB
Insertion Loss, typical	0.8 dB
Return Loss, minimum	18 dB

Electrical Specifications 2, Tx (Downlink)

Frequency Band	1936.875 – 1994.75 MHz
Input Power, PEP, maximum	3000 W
Insertion Loss, maximum	1 dB
Insertion Loss, typical	0.8 dB
Isolation, minimum	28 dB
Isolation, minimum, specific	20 dB (± 500 KHz from band edge)
Return Loss, minimum	18 dB
Total Group Delay, maximum	230 ns

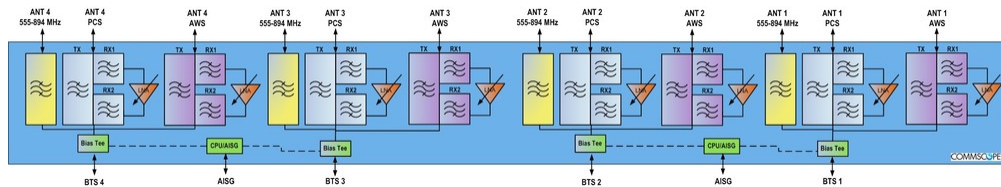
Electrical Specifications, AISG

Insertion Loss, maximum	1 dB
--------------------------------	------

QD-PCS-A125_A4-G

Return Loss, minimum 15 dB

Block Diagram



Environmental Specifications

Operating Temperature -40 °C to +60 °C (-40 °F to +140 °F)

Ingress Protection Test Method IEC 60529:2001, IP67

Packaging and Weights

Included Brackets

Weight, net 28 kg | 61.729 lb