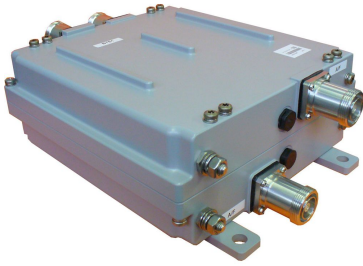


# E15V80P02

---



PCS Twin In-Band Diplexer G Block, ADBEFC4/G Bands

## OBSOLETE

This product was discontinued on: December 1, 2019

## Product Classification

**Product Type** Diplexer

## General Specifications

**Application** Indoor | Outdoor

**Connector Interface** 7-16 DIN Female

**Connector Interface Style** Long neck

## Dimensions

**Height** 231 mm | 9.094 in

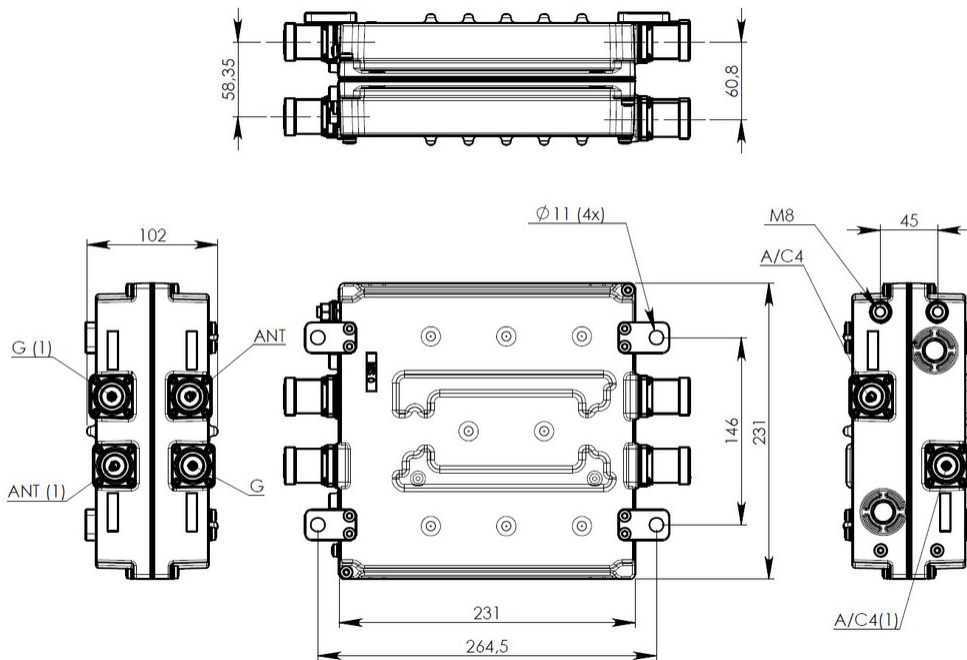
**Width** 231 mm | 9.094 in

**Depth** 102 mm | 4.016 in

**Ground Screw Diameter** 8 mm | 0.315 in

## Outline Drawing

# E15V80P02



## Electrical Specifications

<b>3rd Order IMD Test Method</b>	Two +43 dBm carriers
<b>3rd Order IMD, maximum</b>	155 dBm
<b>Lightning Surge Current</b>	20 kA
<b>Lightning Surge Current Waveform</b>	8/20 waveform

## Electrical Specifications, Rx (Uplink)

<b>Frequency Band</b>	1850 – 1905 MHz
<b>Insertion Loss, maximum</b>	0.5 dB
<b>Return Loss, minimum</b>	18 dB
<b>Isolation, minimum</b>	30 dB

## Electrical Specifications 2, Rx (Uplink)

<b>Frequency Band</b>	1910 – 1915 MHz
<b>Isolation, minimum</b>	30 dB
<b>Insertion Loss, maximum</b>	0.6 dB
<b>Return Loss, minimum</b>	18 dB

## Electrical Specifications, Tx (Downlink)

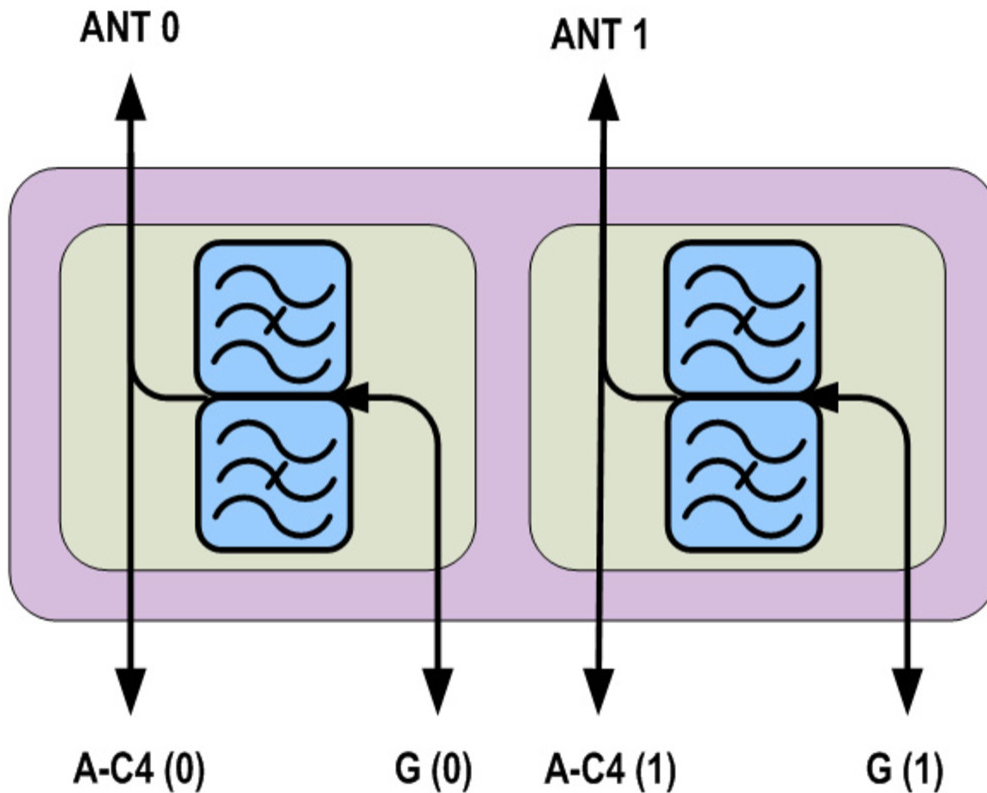
# E15V80P02

<b>Frequency Band</b>	1930 – 1985 MHz
<b>Isolation, minimum</b>	30 dB
<b>Input Power, PEP, maximum</b>	3000 W
<b>Input Power, RMS, maximum</b>	100 W
<b>Insertion Loss, typical</b>	0.5 dB
<b>Return Loss, minimum</b>	18 dB

## Electrical Specifications 2, Tx (Downlink)

<b>Frequency Band</b>	1990 – 1995 MHz
<b>Input Power, PEP, maximum</b>	3000 W
<b>Insertion Loss, typical</b>	0.6 dB
<b>Isolation, minimum</b>	30 dB
<b>Return Loss, minimum</b>	18 dB

## Block Diagram



# E15V80P02

---

## Environmental Specifications

<b>Operating Temperature</b>	-40 °C to +60 °C (-40 °F to +140 °F)
<b>Ingress Protection Test Method</b>	IEC 60529:2001, IP67

## Packaging and Weights

<b>Included</b>	Brackets
<b>Weight, net</b>	7.7 kg   16.976 lb