

E15S09P69

Crossband Coupler, PCS/AWS, AISG compatible, dc pass on AWS port



OBSOLETE

This product was discontinued on: October 31, 2018

Replaced By:

CBC1923-DS-43
E14F05P32

Diplexer PCS/AWS+WCS, dc Sense, 4.3-10

Product Classification

Product Type Coupler

General Specifications

Product Family CBC1921

Color Gray

Common Port Label COM

Modularity 1-Single

Mounting Pole | Wall

Mounting Pipe Hardware Band clamps (2)

RF Connector Interface 7-16 DIN Female

RF Connector Interface Body Style Long neck

Dimensions

Height 192 mm | 7.559 in

Width 186 mm | 7.323 in

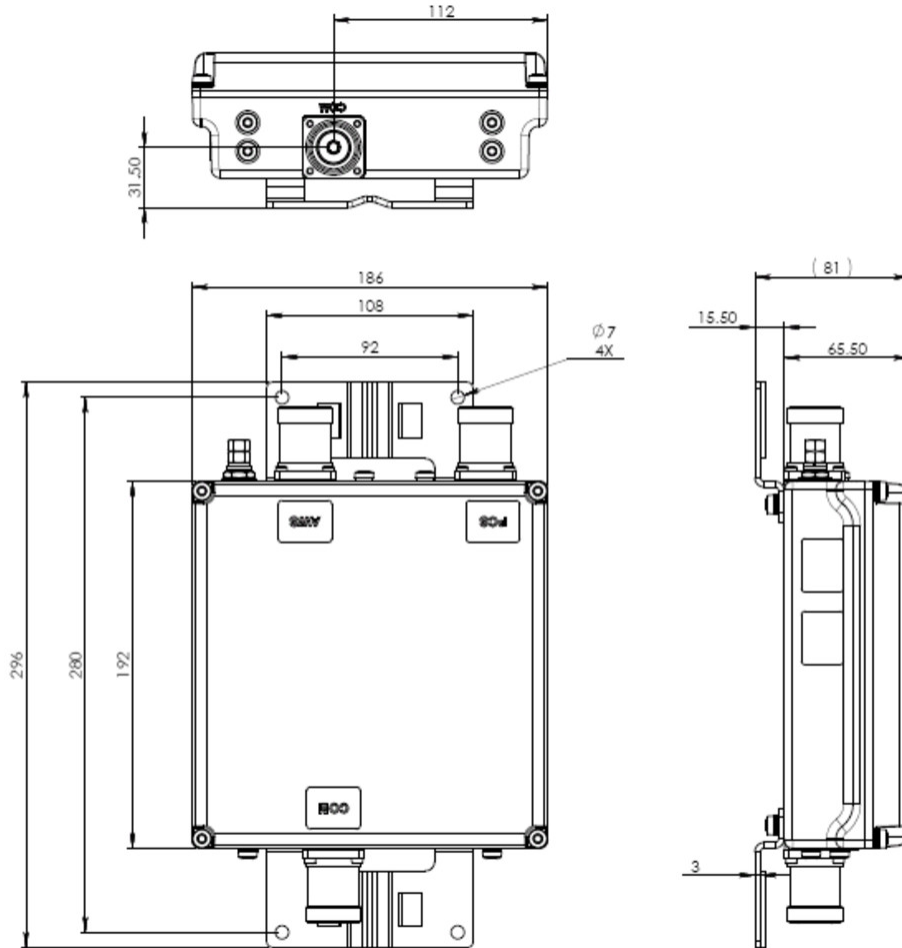
Depth 65.5 mm | 2.579 in

Ground Screw Diameter 6 mm | 0.236 in

Mounting Pipe Diameter Range 40–160 mm

E15S09P69

Outline Drawing



Electrical Specifications

Impedance	50 ohm
License Band, Band Pass	AWS 1700 PCS 1900 TDD 1900

Electrical Specifications, dc Power/Alarm

dc/AISG Pass-through, combiner	Branch 1
dc/AISG Pass-through, demultiplexer	Branch 1
Lightning Surge Current	10 kA
Lightning Surge Current Waveform	8/20 waveform

Electrical Specifications

E15S09P69

Sub-module	1	1
Branch	1	2
Port Designation	AWS	PCS
License Band	AWS 1700, Band Pass	PCS 1900, Band Pass TDD 1900, Band Pass

Electrical Specifications, Band Pass

Frequency Range, MHz	1710–1755 2110–2155	1850–1990
Insertion Loss, typical, dB	0.2	0.2
Total Group Delay, maximum, ns	12	10
Return Loss, minimum, dB	22	22
Return Loss, typical, dB	24	
Isolation, minimum, dB	55	55
Input Power, RMS, maximum, W	250	250
3rd Order PIM, maximum, dBc	-155	-155
3rd Order PIM Test Method	One +43 dBm AWS carrier One +43 dBm PCS carrier	Two +43 dBm carriers

Environmental Specifications

Operating Temperature	-40 °C to +65 °C (-40 °F to +149 °F)
Relative Humidity	Up to 100%
Ingress Protection Test Method	IEC 60529:2001, IP67

Packaging and Weights

Included	Mounting hardware
Volume	2.3 L
Weight, net	3 kg 6.614 lb