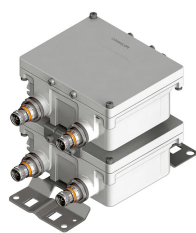


# E14F05P81



## Twin Diplexer 700/800 DC Bypass at 800MHz port, 4.3-10 connectors

- New 4.3-10 connectors for improved PIM performance and size reduction
- Industry leading PIM performance
- Designed for network modernization application, introduction of LTE700 and LTE800 on existing site
- dc/AISG pass-through on high frequency ports
- Twin configuration

### Product Classification

**Product Type** Diplexer

### General Specifications

**Product Family** CBC789

**Color** Gray

**Common Port Label** PORT 3 COMMON

**Modularity** 2-Twin

**Mounting** Pole | Wall

**Mounting Pipe Hardware** Band clamps (2)

**RF Connector Interface** 4.3-10 Female

**RF Connector Interface Body Style** Long neck

### Dimensions

**Height** 165 mm | 6.496 in

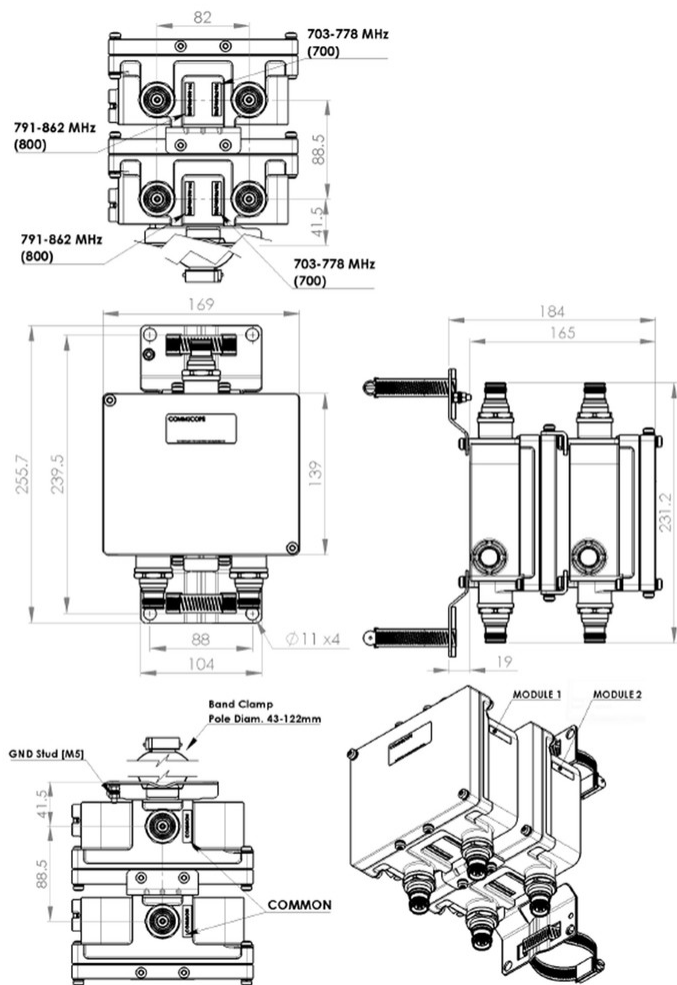
**Width** 1690 mm | 66.535 in

**Depth** 139 mm | 5.472 in

**Mounting Pipe Diameter Range** 40–160 mm

# E14F05P81

## Outline Drawing



## Electrical Specifications

Impedance	50 ohm
License Band, Band Pass	APT 700   CEL 900   EDD 800   LMR 800   USA 700

## Electrical Specifications, dc Power/Alarm

dc/AISG Pass-through Method	Factory set
dc/AISG Pass-through Path	Branch 2
dc/AISG Pass-through, combiner	Branch 2
dc/AISG Pass-through, demultiplexer	Branch 2
Lightning Surge Current	10 kA

# E14F05P81

Lightning Surge Current Waveform

8/20 waveform

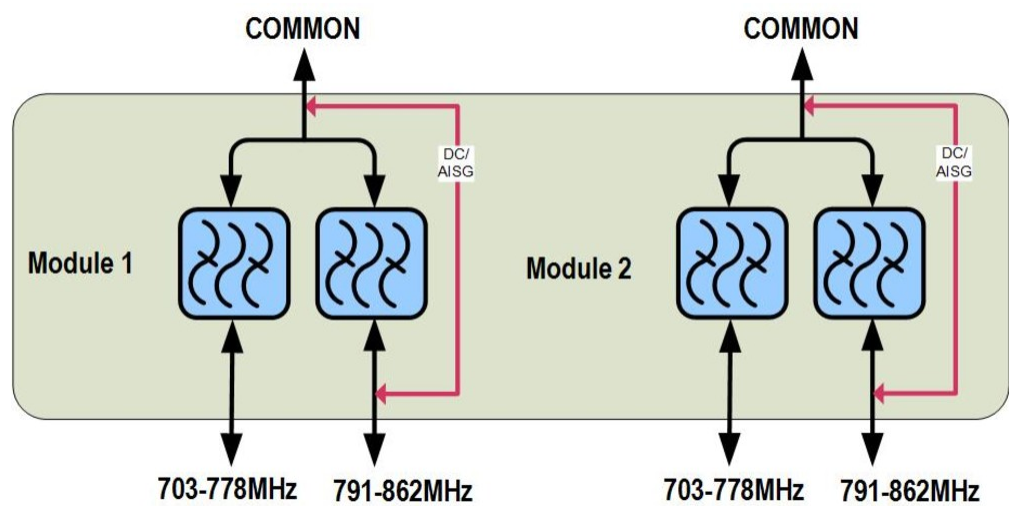
## Electrical Specifications

Sub-module	1   2	1   2
Branch	1	2
Port Designation	PORT 1 703-778	PORT 2 790-862
License Band	APT 700, Band Pass USA 700, Band Pass	EDD 800, Band Pass LMR 800, Band Pass

## Electrical Specifications, Band Pass

Frequency Range, MHz	703–778	790–862
Insertion Loss, typical, dB	0.3	0.3
Return Loss, typical, dB	20	20
Isolation, minimum, dB	35	35
Input Power, RMS, maximum, W	200	200
Input Power, PEP, maximum, W	2000	2000
3rd Order PIM, typical, dBc	-163	-163
3rd Order PIM Test Method	Two +43 dBm carriers	Two +43 dBm carriers

## Block Diagram



## Environmental Specifications

Operating Temperature	-40 °C to +65 °C (-40 °F to +149 °F)
Corrosion Test Method	IEC 60068-2-11, 30 days

# E14F05P81

**Ingress Protection Test Method** IEC 60529:2001, IP67

## Packaging and Weights

<b>Included</b>	Mounting hardware
<b>Volume</b>	3.9 L
<b>Weight, net</b>	5 kg   11.023 lb
<b>Weight, without mounting hardware</b>	4.5 kg   9.921 lb

## Regulatory Compliance/Certifications

<b>Agency</b>	<b>Classification</b>
ISO 9001:2015	Designed, manufactured and/or distributed under this quality management system