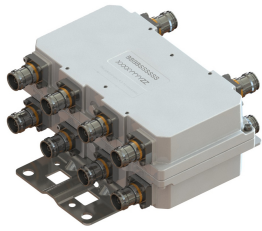


CBC1923Q-43 | E14F55P12



Quad-pack Diplexer PCS/AWS+WCS, DC block, 4.3-10

- Full performance in a fraction of the size
- High power handling
- Includes AWS-3 and AWS-4 bands
- New 4.3-10 connectors for improved PIM performance and size reduction
- dc/AISG blocking on all ports (DC grounded)
- Ideal for small cell applications

OBSOLETE

This product was discontinued on: April 30, 2020

Replaced By:

SDX1926Q-43
E14F05P86

Ultra Compact Quad-pack Diplexer PCS/AWS+WCS+BRS, DC AWS/WCS/BRS, 4.3-10

Product Classification

Product Type Diplexer

General Specifications

Color Gray

Common Port Label Common

Modularity 4-Quad

RF Connector Interface 4.3-10 Female

RF Connector Interface Body Style Long neck

Dimensions

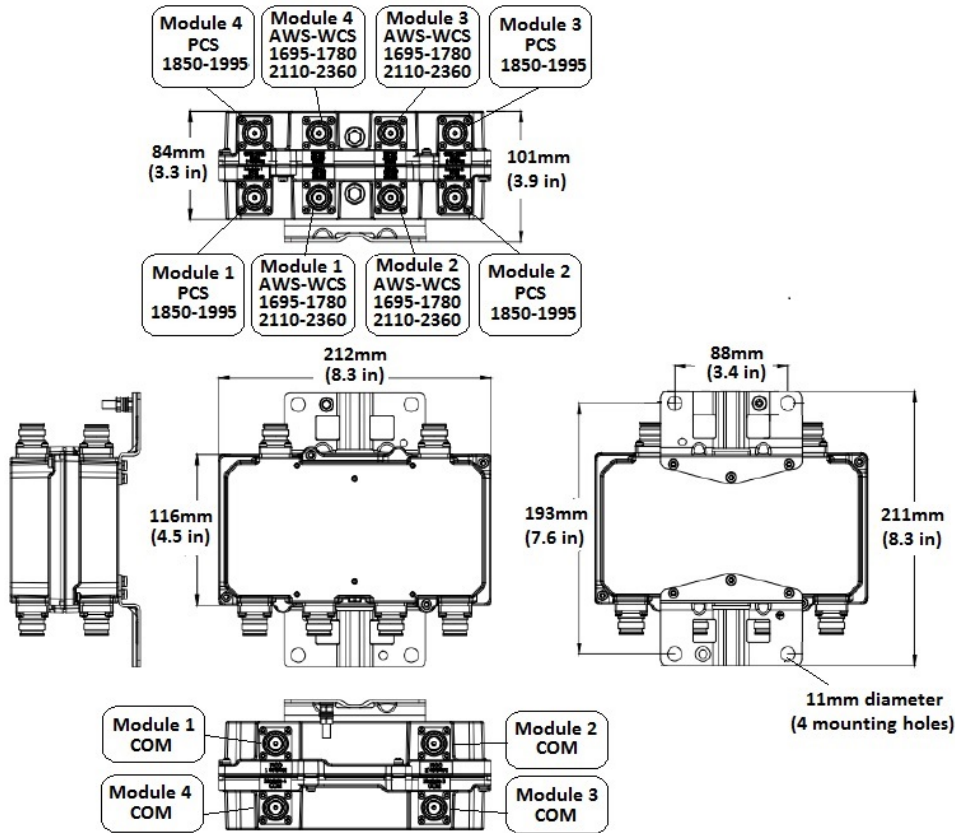
Height 116 mm | 4.567 in

Width 212 mm | 8.346 in

Depth 84 mm | 3.307 in

CBC1923Q-43 | E14F55P12

Outline Drawing



Electrical Specifications

Impedance	50 ohm
License Band, Band Pass	AWS 1700 PCS 1900 TDD 1900 TDD 2300 TDD 2600 WCS 2300

Electrical Specifications, dc Power/Alarm

Lightning Surge Current	5 kA
Lightning Surge Current Waveform	8/20 waveform

Electrical Specifications

Sub-module	1 2	1 2
Branch	1	2
Port Designation	Port 1695-1780/2110-2360	Port 1850-1995

CBC1923Q-43 | E14F55P12

License Band

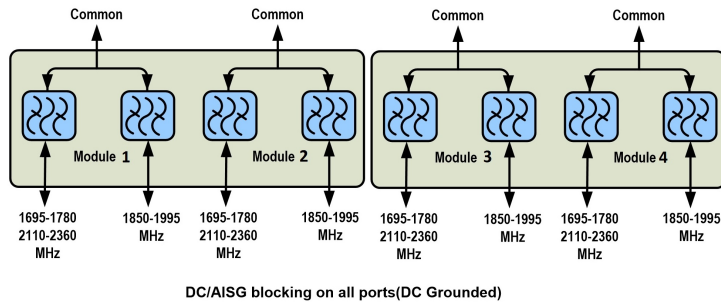
AWS 1700, Band Pass
WCS 2300, Band Pass
TDD 2300, Band Pass

PCS 1900, Band Pass

Electrical Specifications, Band Pass

Frequency Range, MHz	1695-1780 2110-2360	1850-1995
Insertion Loss, typical, dB	0.25	0.25
Total Group Delay, maximum, ns	15	15
Return Loss, typical, dB	23	23
Isolation, typical, dB	40	40
Input Power, RMS, maximum, W	100	100
Input Power, PEP, maximum, W	1500	1500
3rd Order PIM, minimum, dBc	-161	-161
3rd Order PIM Test Method	1 x 20 W AWS CW tone 1 x 20 W PCS CW tone	2 x 20 W CW tones

Block Diagram



Material Specifications

Finish Painted

Mechanical Specifications

Wind Loading @ Velocity, frontal 12.0 N @ 150 km/h (2.7 lbf @ 150 km/h)

Wind Loading @ Velocity, lateral 7.0 N @ 150 km/h (1.6 lbf @ 150 km/h)

Environmental Specifications

Operating Temperature -40 °C to +65 °C (-40 °F to +149 °F)

Relative Humidity Up to 100%

Corrosion Test Method IEC 60068-2-11, 30 days

Ingress Protection Test Method IEC 60529:2001, IP67

Packaging and Weights

Mounting Hardware Weight	0.3 kg 0.661 lb
Weight, without mounting hardware	3.3 kg 7.275 lb

Regulatory Compliance/Certifications

Agency	Classification
CHINA-ROHS	Below maximum concentration value
REACH-SVHC	Compliant as per SVHC revision on www.commscope.com/ProductCompliance
ROHS	Compliant
UK-ROHS	Compliant

