

Optical Passives (OSP)

OP9xxx

Overview of ARRIS's Field Passives

FIBER SIZES, TYPES, AND CONNECTOR OPTIONS FOR AVAILABLE PACKAGES

	Package Style				
	N-Case	C-Case	S-Case	F-Case	
	Connectors				
Product Type	<i>None</i>	<i>None</i>	SC/APC	<i>None</i>	SC/APC
Splitters/Couplers	0.25 mm bare fiber	2 mm fiber jacket	2 mm fiber jacket	0.9 mm or 2 mm fiber jacket	2 mm fiber jacket
Single-wavelength Filters	0.25 mm bare fiber	2 mm fiber jacket	2 mm fiber jacket	<i>N/A</i>	<i>N/A</i>
Mux/Demux Modules	<i>N/A</i>	<i>N/A</i>	<i>N/A</i>	0.9 mm or 2 mm fiber jacket	2 mm fiber jacket
Custom Optics (e.g., Light-Plex™)	0.25 mm bare fiber	2 mm fiber jacket	<i>N/A</i>	0.9 mm or 2 mm fiber jacket	2 mm fiber jacket
Band Filters	0.25 mm bare fiber	2 mm fiber jacket	2 mm fiber jacket	<i>N/A</i>	<i>N/A</i>

MODEL NUMBER PREFIXES AND MEANING

OP91	Devices operating at 1310 and/or 1550 nm
OP93	Devices operating at LcWDM® wavelengths
OP94	Devices operating at CWDM wavelengths (ITU-T G.694.2)
OP95	Devices operating at DWDM wavelengths (ITU-T G.694.1)

Refer to individual product data sheets for specific ordering information.

PACKAGE STYLES

All packages shown at 50% of actual size.

N-Case

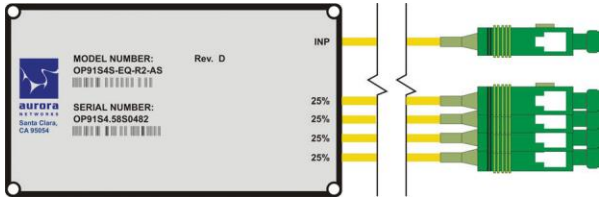
Max 60 x 5.5 (diameter) mm Package
 Example: OP91S3S-EQ-N0-00 1x3 Splitter



Available products:
 Splitters/Couplers, Single-wavelength Filters,
 Custom Optics, Band Filters

S-Case

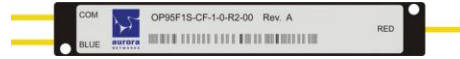
Ruggedized 89 x 51 x 9.2 mm Package
 Example: OP91S4S-EQ-R2-AS 1x4 Splitter



Available products:
 Splitters/Couplers, Single-wavelength Filters, Band Filters

C-Case

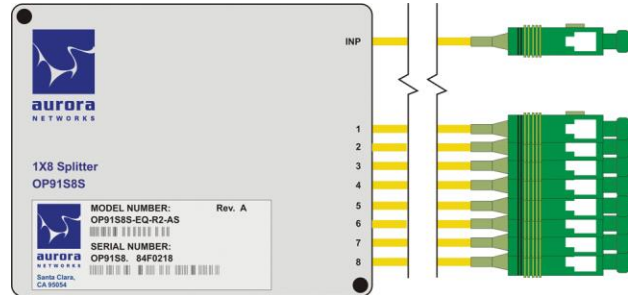
Ruggedized 98 x 14 x 8.5 mm Package
 Example: OP95F1S-CF-1-0-R2-00 Red/Blue Bands Filter



Available products:
 Splitters/Couplers, Single-wavelength Filters, Custom Optics,
 Band Filters

F-Case

Ruggedized 95 x 78 x 8 mm Package
 Example: OP91S8S-EQ-R2-AS 1x8 Splitter



Available products:
 Splitters/Couplers, Custom Optics (Light-Plex), Mux/Demux

RELATED PRODUCTS

Optical Transmitters	Optical Passives
Digital Return	Optical Patch Cords
Optical Nodes	Installation Services

OPTICAL SPECTRUM OVERVIEW

MODULE PASSTHROUGH RANGES

For all input and output ports except ports that are wavelength- or channel-specific.

Only 1263.5 – 1357.5 Passthrough

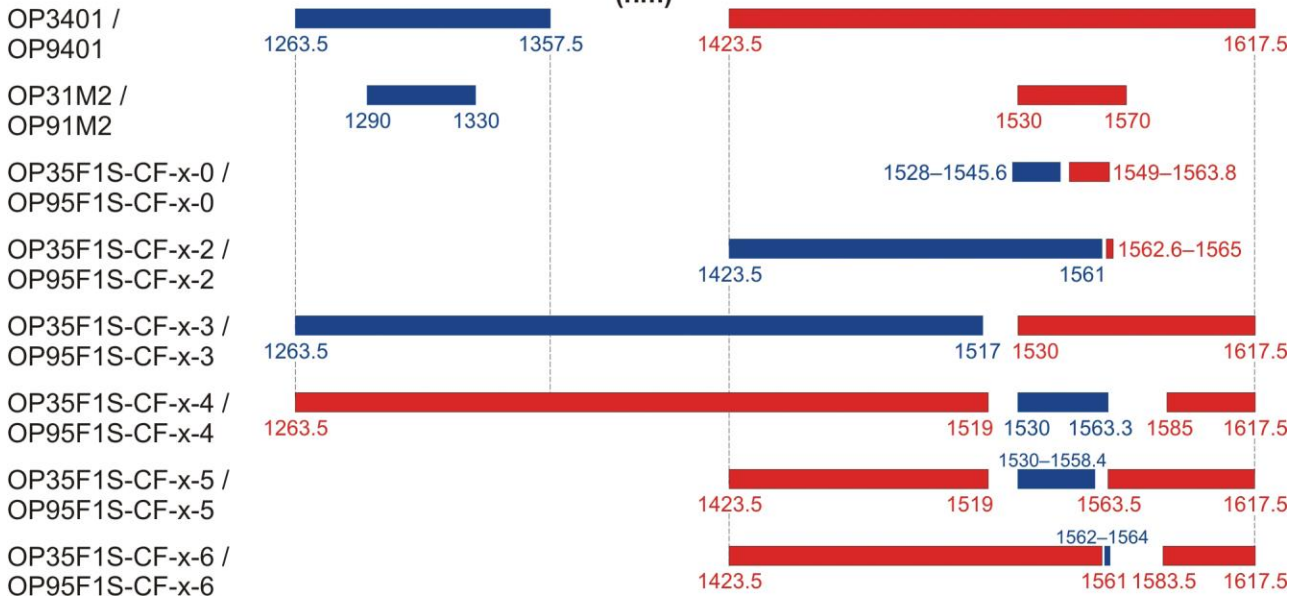
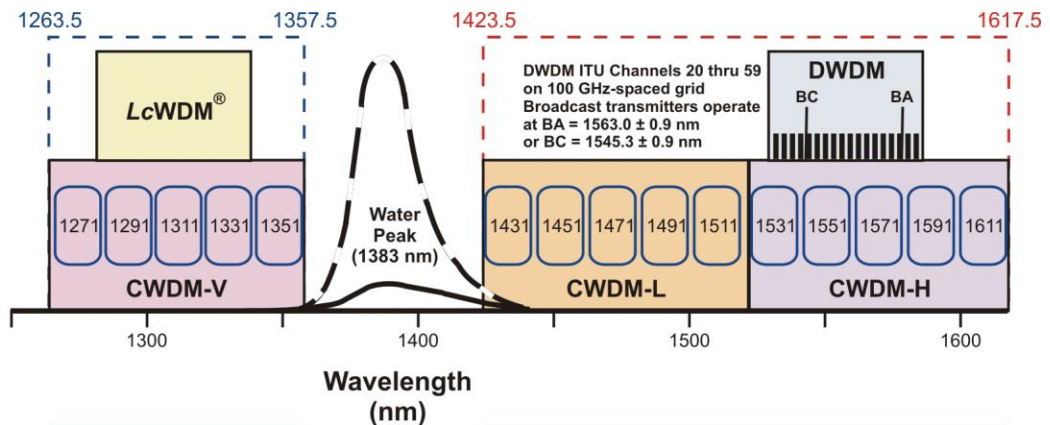
LcWDM™: Mux/Demux/Filters (OP33xxx, OP93xxx)

CWDM-V: Mux/Demux Modules (OP34x5V and OP94x5V) and Filters (OP34F1x and OP94F1x)

Only 1423.5 – 1617.5 Passthrough

DWDM: Light-Plex™ Modules (OP3514, OP3524, OP3534, OP4528, OP4538, OP9534)

CWDM-L and CWDM-H: Mux/Demux Modules (OP34x5L, OP34x5H, OP34x10, OP94x5L, OP94x5H, and OP94x10) and Filters (OP34F1x and OP94F1x)



Note: Specifications are subject to change without notice.

Copyright Statement: ©ARRIS Enterprises, LLC, 2016. All rights reserved. No part of this publication may be reproduced in any form or by any means or used to make any derivative work (such as translation, transformation, or adaptation) without written permission from ARRIS Enterprises, LLC ("ARRIS"). ARRIS reserves the right to revise this publication and to make changes in content from time to time without obligation on the part of ARRIS to provide notification of such revision or change. ARRIS and the ARRIS logo are registered trademarks of ARRIS Enterprises, LLC. Other trademarks and trade names may be used in this document to refer to either the entities claiming the marks or the names of their products. ARRIS disclaims proprietary interest in the marks and names of others. The capabilities, system requirements and/or compatibility with third-party products described herein are subject to change without notice.

Customer Care

Contact Customer Care for product information and sales:

- United States: 866-36-ARRIS
- International: +1-678-473-5656