

RUCKUS Q710

High Capacity Indoor LTE Access Point for the 3.5GHz CBRS Band



BENEFITS

STUNNING PERFORMANCE

The RUCKUS Q710 offers the highest capacity available on the US CBRS band. Aggregating up to four CBRS channels, Q710 can offer over 300Mbps of combined throughput to users in high-density areas such as stadiums, hotels and enterprise environments.

MULTIPLE APPLICATIONS

From mobile coverage and capacity, to Private LTE and neutral host networks, Q710 covers a broad gamut of CBRS use cases.

ADVANCED TECHNOLOGY

Q710 is packed with advanced 3GPP and proprietary technology, such as LTE-Advanced Carrier Aggregation, Self-Organizing Networks (SON), Self-Organizing Timing and Zero-Touch Provisioning™ that make the solution both extremely powerful as well as easy to deploy.

WI-FI -LIKE SIMPLICITY

Q710 is ideal for in-building LTE wireless networks that deploy with the economics and simplicity of Wi-Fi.

ATTRACTIVE DESIGN

Q710 looks and feels like a Wi-Fi access point. Its attractive design is ideal for hospitality, education, large office, MTU/MDU, retail, public venues and similar environments. It can even be hidden above ceiling tiles or painted to virtually disappear into the environment.

Overview

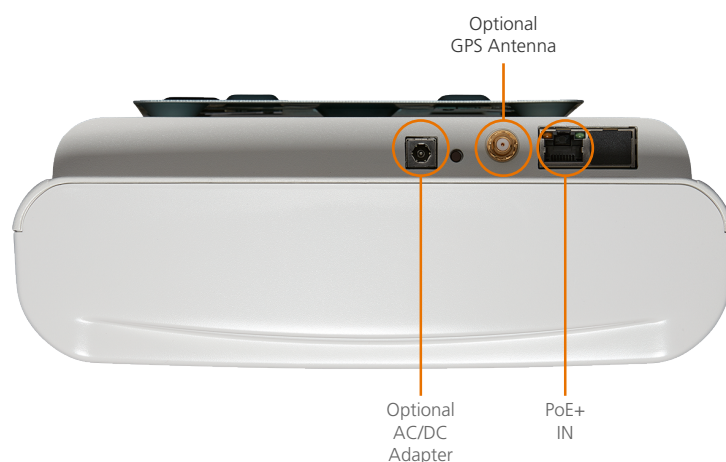
CommScope offers a broad portfolio of CBRS-capable LTE access points. RUCKUS® LTE access points include indoor, outdoor and plug-ins to existing RUCKUS Wi-Fi access points.

The RUCKUS Q710 is an indoor, ceiling or wall-mounted LTE Access Point for CBRS. Q710 offers the highest CBRS capacity available in an attractive, Enterprise-friendly design.

Key features and benefits

- CBRS Alliance OnGo™ Certified for trusted interoperability with all CBRS equipment
- Aggregates up to 4 available CBRS channels for best-in-class capacity and performance
- CBRS Category A compliant
- PoE+ and internal BeamFlex® antennas for Wi-Fi like deployment simplicity
- Attractive design ideal for public venues and private enterprise environments

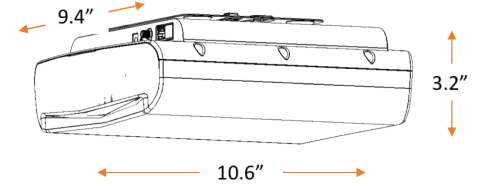
Port detail



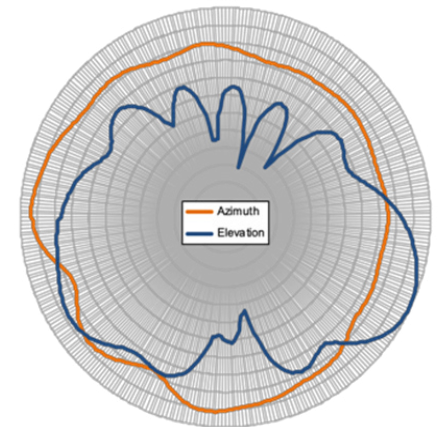
Specifications

| MODEL | Q710 |
|-----------------------------------------------------|--------------------------------------------------------------------------------------------------------------------------------------------------------------------------|
| Type | Indoor High Capacity |
| Technology | 3GPP Release 13 TD-LTE Small Cell (eNodeB) |
| Frequency Band | CBRS B48 (3550-3700 MHz) |
| Output Power | 4 ports at 24dBm per port |
| MIMO Configuration | Dual 2x2 MIMO |
| Antennas | 4 Internal BeamFlex® antennas |
| Max Antenna Gain | 3 dBi per antenna |
| Max EIRP | 1 W per RF Carrier |
| Max Bandwidth | Up to two 20 MHz RF Carriers (40 MHz total) |
| Bandwidth Configurations (MHz) ¹ | Non-contiguous 10, 20, 10+20, and 20+20 |
| Max Throughput ^{1,2} | 300 Mbps |
| Max Simultaneous (RRC Connected) Users ¹ | 64 |
| Timing Interface | Built-in GPS, IEEE 1588v2 PTP |
| Data Interface | 1Gb Ethernet |
| Power Interface | PoE+ In (IEEE 802.3at) or 12VDC@2A |
| Networking Protocols | IPv4/IPv6, VLAN, IPsec |
| Max Power Consumption | 20W |
| EPC Support | Standard 3GPP S1 Interface |
| SAS Support | WINN Forum TS1.0 |
| EMS Support | RUCKUS Cloud LTE |
| Certifications | OnGo™, FCC Part 96, UL |
| Physical Ports | 2x 1GbE RJ-45, 12VDC In, SMA for external GPS antenna ³ |
| Size (H x W x L) | 3.2 x 9.4 x 10.6" |
| Weight | 4.34 lbs |
| Environmental | 0 C (32°F) to +40 C (104°F) |
| Indicator Lights | PWR: PoE+ or 12VDC on EMS: Connected to RUCKUS Cloud LTE EPC: Connected to LTE controller (EPC) SYNC: Timing sync to GPS or IEEE1588 LTE: LTE service active |
| Box Contents | Q710, mounting bracket, AC/DC adapter |
| Ordering Information ⁴ | P01-Q710-US02 |
| Warranty | 1 year Hardware, 90 days Software (extended with purchase of either CLx-RKSC-x001 or CLx-NTWK-x001) |

Dimensions



Antenna



Q710 Antenna Patterns

¹ May require future software features.

² Approximate maximum aggregate application layer uplink and downlink throughput, 4 CBRS channels (40MHz), TDD Config 2, Cat 6 and above UE client.

³ External GPS antenna is intended for indoor use only.

⁴ Requires a CLD-RKSC or CLD-NTWK package.

COMMSCOPE®

commscope.com

Visit our website or contact your local CommScope representative for more information.

© 2020 CommScope, Inc. All rights reserved.

Unless otherwise noted, all trademarks identified by ® or ™ are registered trademarks, respectively, of CommScope, Inc. This document is for planning purposes only and is not intended to modify or supplement any specifications or warranties relating to CommScope products or services. CommScope is committed to the highest standards of business integrity and environmental sustainability with a number of CommScope's facilities across the globe certified in accordance with international standards, including ISO 9001, TL 9000, and ISO 14001.

Further information regarding CommScope's commitment can be found at www.commscope.com/About-Us/Corporate-Responsibility-and-Sustainability.

PA-114353.1-EN (10/20)