

TC-1362-4-IP
Rev A, Aug 2017
www.commscope.com

Gel-sealed Splice Closure In-Line

1.1 Product description

Cable OD range 8-12mm

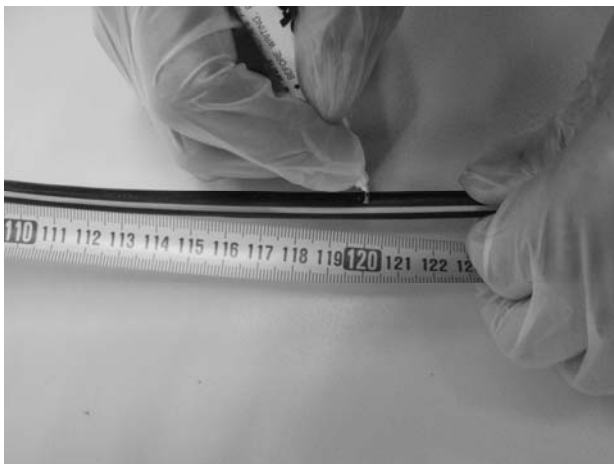
1.2 Kit Content



1. Cable bracket
2. Gel donut
3. Blocking ring
4. Dummy rod
5. Screw for cable bracket fixation
6. Tie wrap
7. Cleaning tissue
8. Transportation tube
9. Installation instruction

2 Cable preparation

- 2.1 Remove the cable sheath over 1200mm.



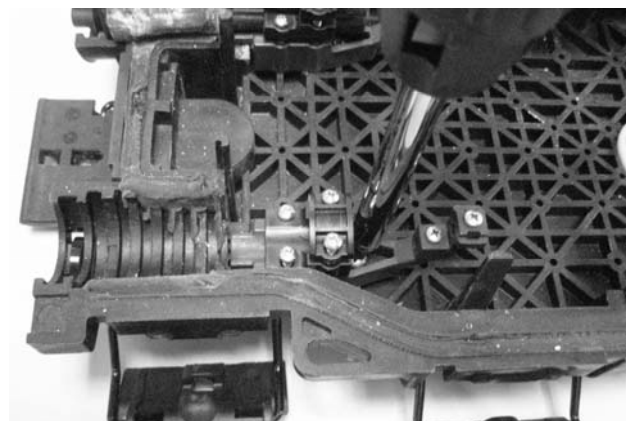
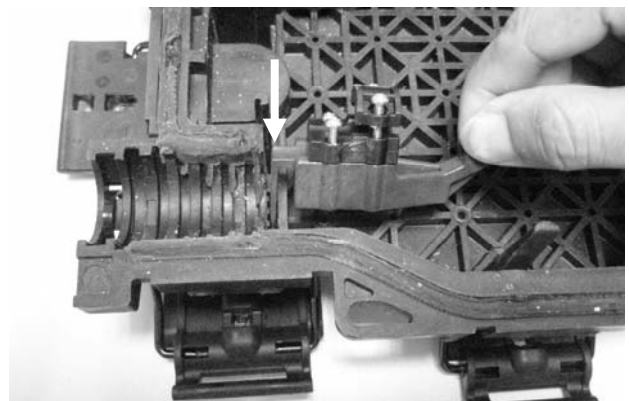
- 2.2 Cut the strength member up to 40mm from the cable jacket end.



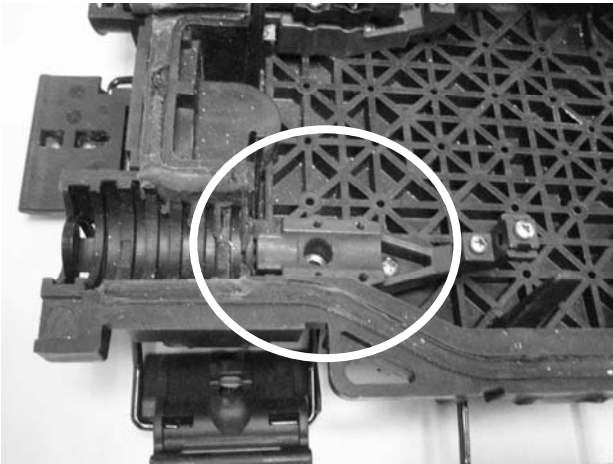
- 2.3 Clean the cable up to 80mm with cleaning tissue.

3 Cable installation

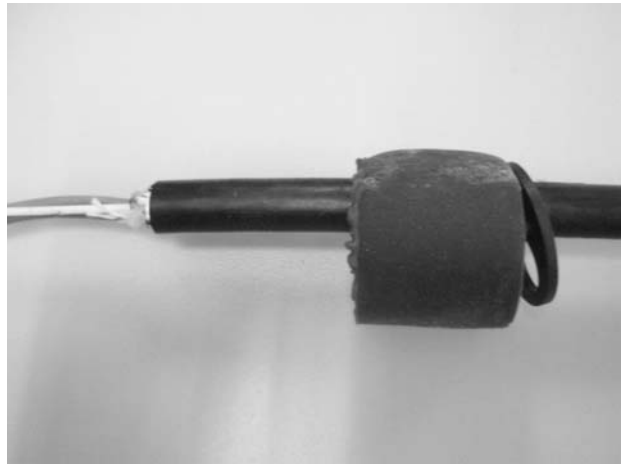
- 3.1 Fit the cable bracket into the slot and fix it onto the closure by the screw.



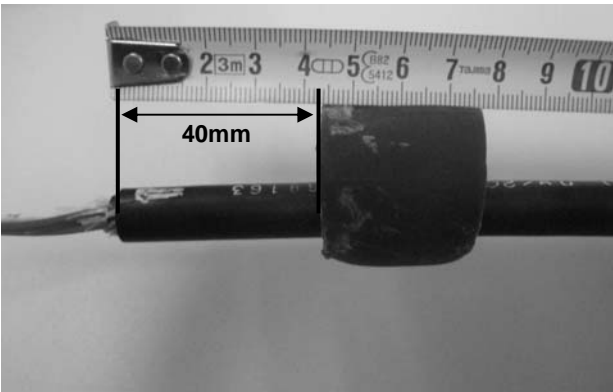
3.2 Remove the cable bracket tabs.



3.5 Install the blocking ring onto the cable.

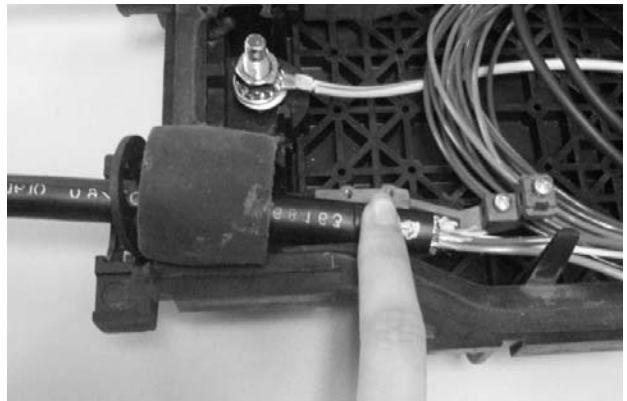


3.3 Fit the gel donut onto the cable at a distance of 40mm.

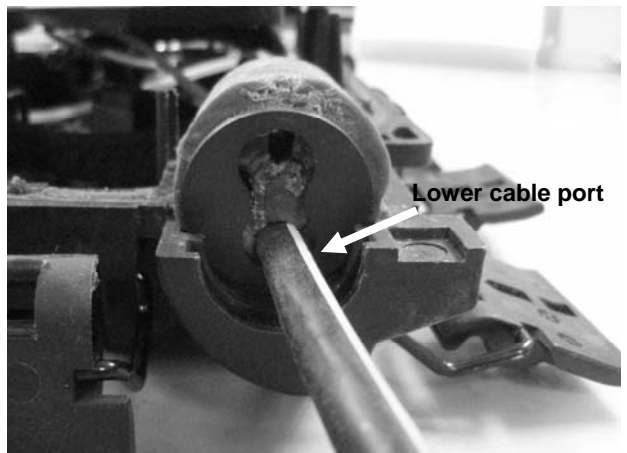
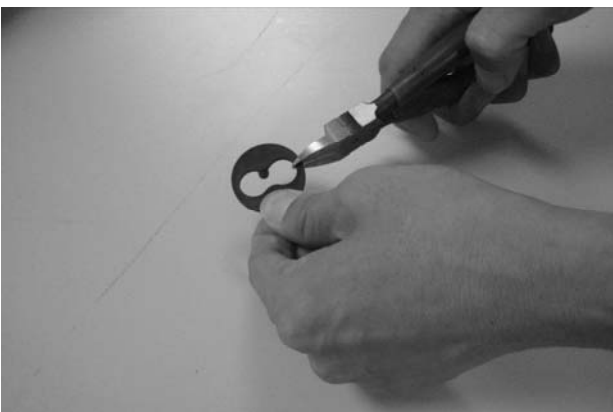


3.6 Position the cable onto the cable port with fitting the cable blocking ring into the slot.

Note: Always start cable installation at the lower cable port.



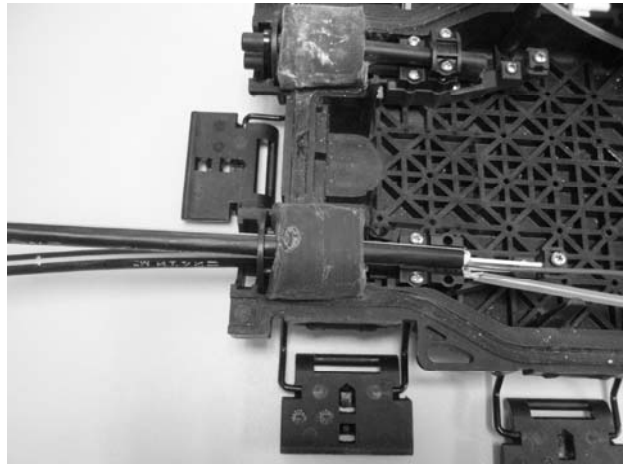
3.4 Cut the blocking ring at the mark.



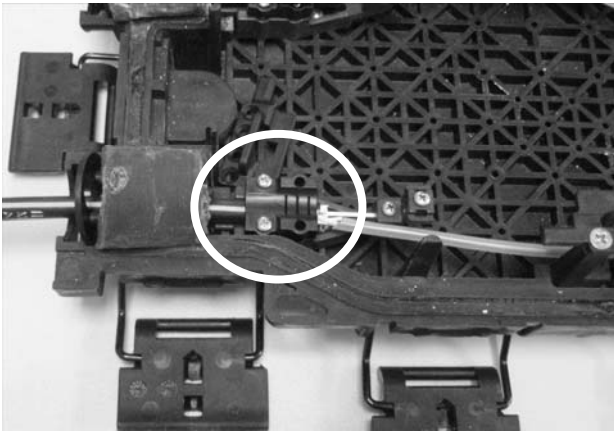
3.7 Secure the strength member by tightening the screw.



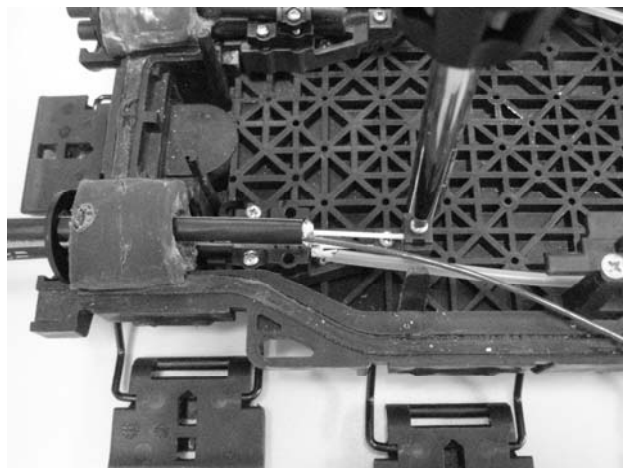
3.9 Install the 2nd cable.



3.8 Add on the lower cable tab to secure the cable.



3.10 Tighten the screw to secure the strength member.



Note: Refer to Fig. 1 for the tab installation.

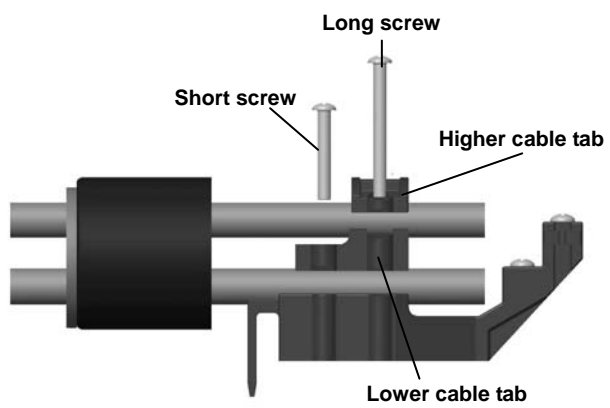
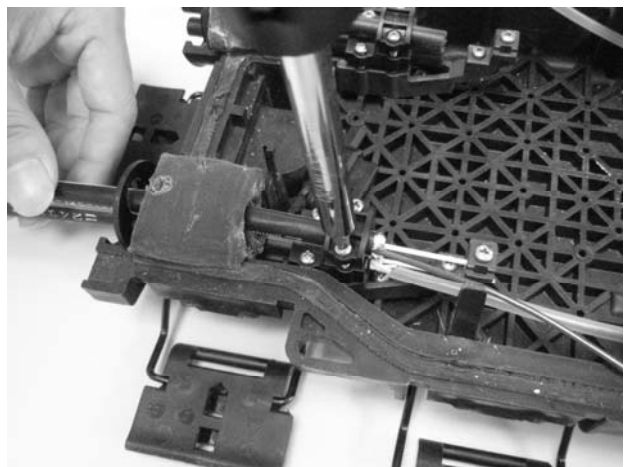


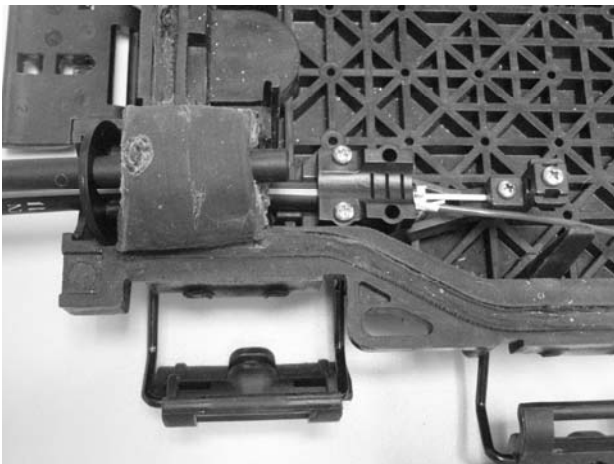
Fig. 1

3.11 Add on the top cable tab to secure the cable.

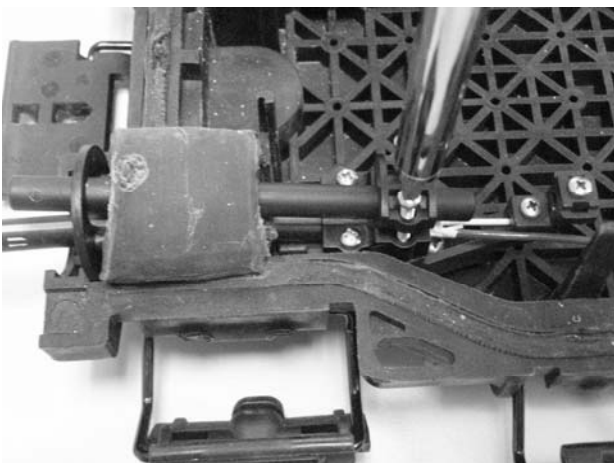


3.12 Install the dummy rods on unused cable ports.

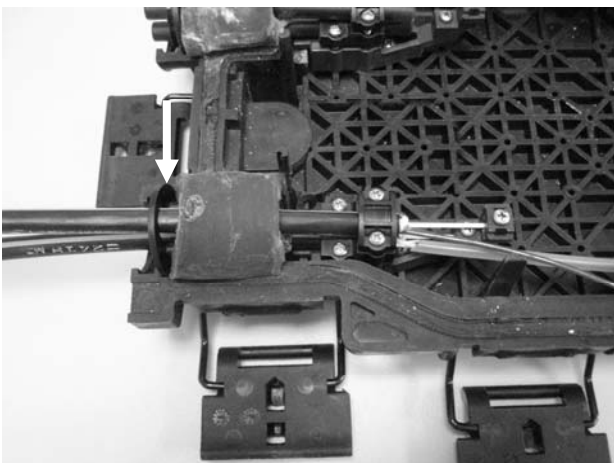
3.12.1 Install the dummy rod as shown.



3.12.2 Secure the dummy rod.



3.13 Check the blocking ring. Make sure the blocking ring is in the slot.



3.14 Secure the cables/dummy rod with a black tie wrap.



3.15 Refer to SCIL-B installation instruction to complete the closure installation.