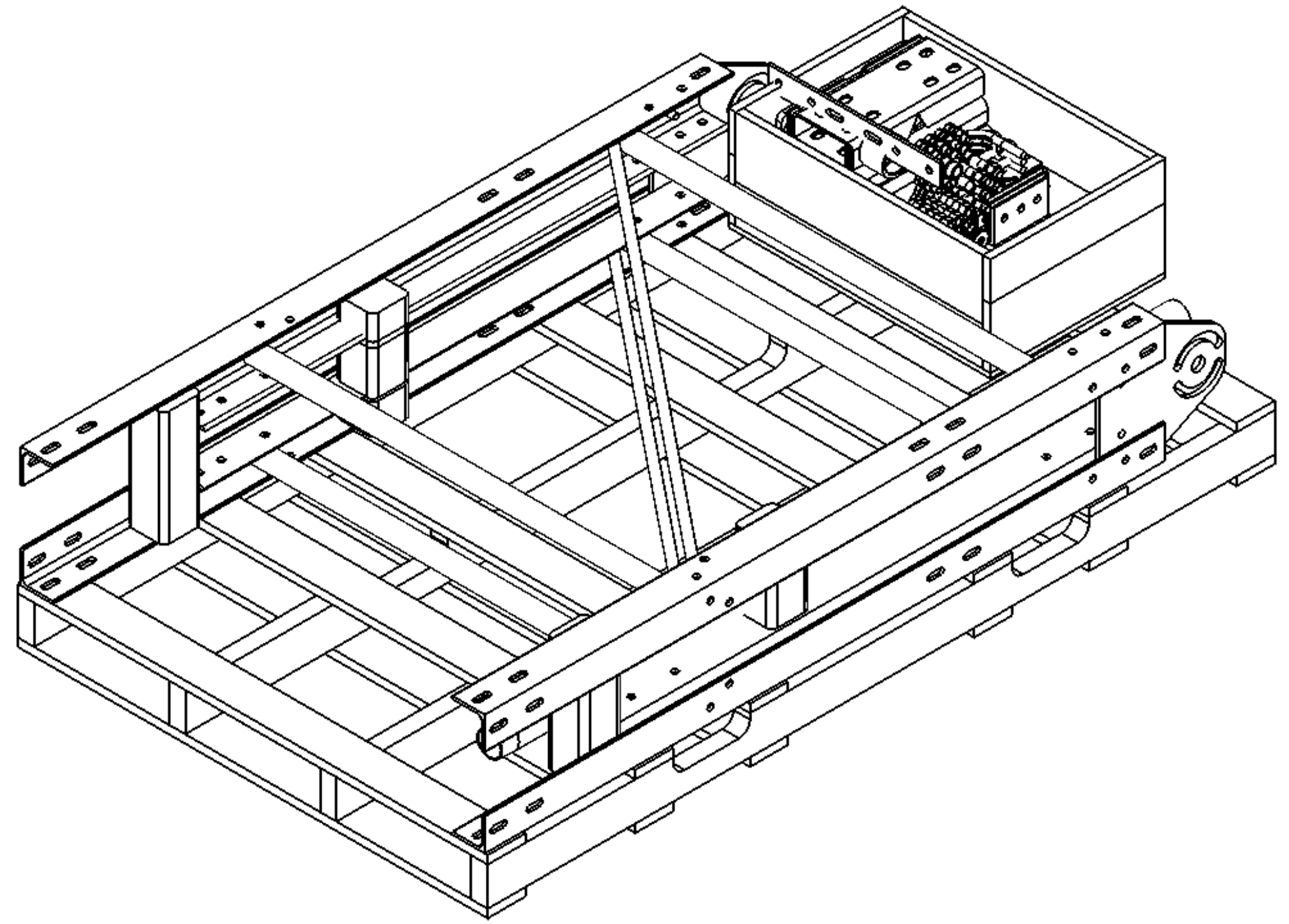



ITEM	PART NO.	DESCRIPTION	QTY.	WEIGHT	NOTE NO.
1	SAB6301	Ø 2-3/8" O.D. X 64" SCH 40 PIPE NPT 1 END	2	18.98 LBS	
2	SFQV02	SF-QV Transition Swivel Plate	2	9.20 LBS	
3	SFQV01	SF-QV Arm Frame Weldment	1	59.92 LBS	
4	GB-04145	1/2" X 1-1/2" GALV BOLT KIT	4	0.13 LBS	
5	QVPALLET	43 X 72 Pallet for SF-QV Series	1	55.55 LBS	
6	SFQVxx	SF-QV Face Angle (See Table on Sheet 2)	4	24.99 LBS	
7	SFQVHK2	HARDWARE KIT FOR SF-QV SERIES FRAMES	1	128.51 LBS	
8	MTC360601	RIGHT FRAME WELDMENT	1	59.92 LBS	

△ K

REVISIONS				
REV.	ZONE	DESCRIPTION	BY	DATE
A		INITIAL RELEASE	MSM	11/30/11
B		UPDATE BOM	MSM	05/29/12
C		ADJUSTED BALLOON NUMBERS ON P.2	DRR	07/11/12
D		REDESIGNED FACE ANGLE ATTACHMENT	MSM	08/21/12
E		CHG 5/8 ALLTHREAD AND SA-BU	MSM	09/12/12
F		UPDATE SFQV10, ADD 1/2" FLAT WASHERS (16EA)	MSM	03/31/14
G	8000006207	REPLACED SFQV12 W SFQV50, SFQV13 W/SFQV51	RJC	12/15/14
H	8000006198	CHANGE FACE ANGLES	MSM	12/16/14
J	8000020217	CHANGE TOWER LEG CLAMPS	MSM	02/17/17
K	8000025675	CHGD RIGHT FRAME WLDMT TO & STIFF ARM MTG	RJC	08/29/17



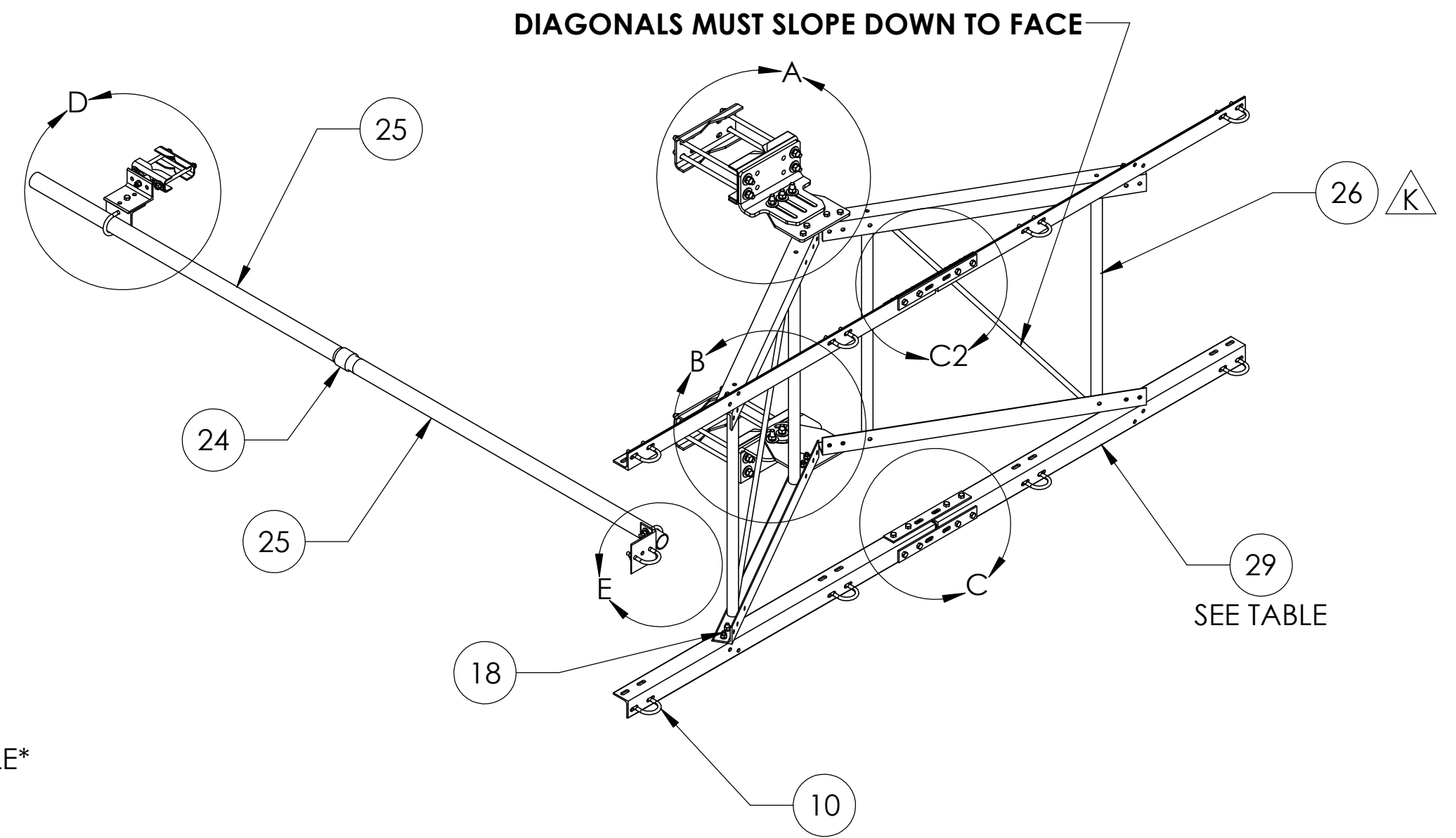
<small>These drawings and specifications are the proprietary property of ANDREW CORPORATION and may be used only for the specific purpose authorized in writing by Andrew Corporation.</small>		DRAWN BY: MSM CHECKED BY: TP DATE: 11/30/11 REVISION: K	SHEET: 1 of 7 SCALE: NTS MATERIAL: A36, A529, A500 FINISH: GALV A123 WEIGHT: SEE TABLE	PART NUMBER: SF-QV-B SERIES DESCRIPTION: Sector Frame Quick-V DRAWING TYPE: ASSEMBLY DRAWING  WESTCHESTER, IL. 60154 U.S.A.
--	--	--	--	--

DO NOT SCALE THIS PRINT

ITEM	PART NO.	DESCRIPTION	QTY.	WEIGHT
1	SFQV01	SF-QV Arm Frame Weldment	1	59.92 LBS
2	SFQV02	SF-QV Transition Swivel Plate	2	9.20 LBS
3	SFQV03	Top SF-QV Mount Bracket	1	18.22 LBS
4	SFQV04	Lower SFQV Mount Bracket	1	18.75 LBS
5	MTC360613	SPLICE PLATE	8	2.04 LBS
6	SFQV11	Taper Plate Bushing	2	0.06 LBS
7	SFQV12	90 Deg Tower Bracket	2	5.31 LBS
8	SFQV13	SF-QV Back Clamp	2	7.51 LBS
9	SFQV14	60 Deg Tower Bracket	2	5.22 LBS
10	GUB-4240	1/2" X 2-1/2" X 4" GALV U-BOLT	11	0.56 LBS
11	SAB01	FORMED CLAMP	2	1.35 LBS
12	OS15034	3/4" X 1-1/2" OFFSET COLLAR	1	0.14 LBS
13	XA2020.01	CROSS OVER ANGLE	3	2.65 LBS
14	GB-05245	5/8" X 2-1/2" GALV BOLT KIT	6	0.30 LBS
15	GWF-05	5/8" GALV FLAT WASHER	34	0.06 LBS
16	GWL-05	5/8" GALV LOCK WASHER	16	0.03 LBS
17	GN-05	5/8" GALV HEX NUT	24	0.08 LBS
18	GB-04145	1/2" X 1-1/2" GALV BOLT KIT	32	0.13 LBS
19	GWF-04	1/2" GALV FLAT WASHER	20	0.03 LBS
20	GWL-04	1/2" GALV LOCK WASHER	4	0.01 LBS
21	GN-04	1/2" GALV HEX NUT	4	0.04 LBS
22	MT-379-8	1/2" X 8" GALV THREADED ROD	2	0.44 LBS
23	MT-382-16	5/8" X 16" GALV THREADED ROD	8	1.38 LBS
24	200GC	2" RMC COUPLING	1	1.57 LBS
25	SAB6301	Ø 2-3/8" O.D. X 64" SCH 40 PIPE NPT 1 END	2	18.98 LBS
26	MTC360601	RIGHT FRAME WELDMENT	1	59.92 LBS
27	GB-04125	1/2" X 1-1/4" GALV BOLT KIT	1	0.12 LBS
28	GB-04265	1/2" X 2-3/4" GALV BOLT KIT	1	0.20 LBS
29	SFQVXX	SF-QV Face Angle (SEE TABLE)	4	24.99 LBS

△ K

* SEE TABLE*




SF-QV-B SERIES TABLE

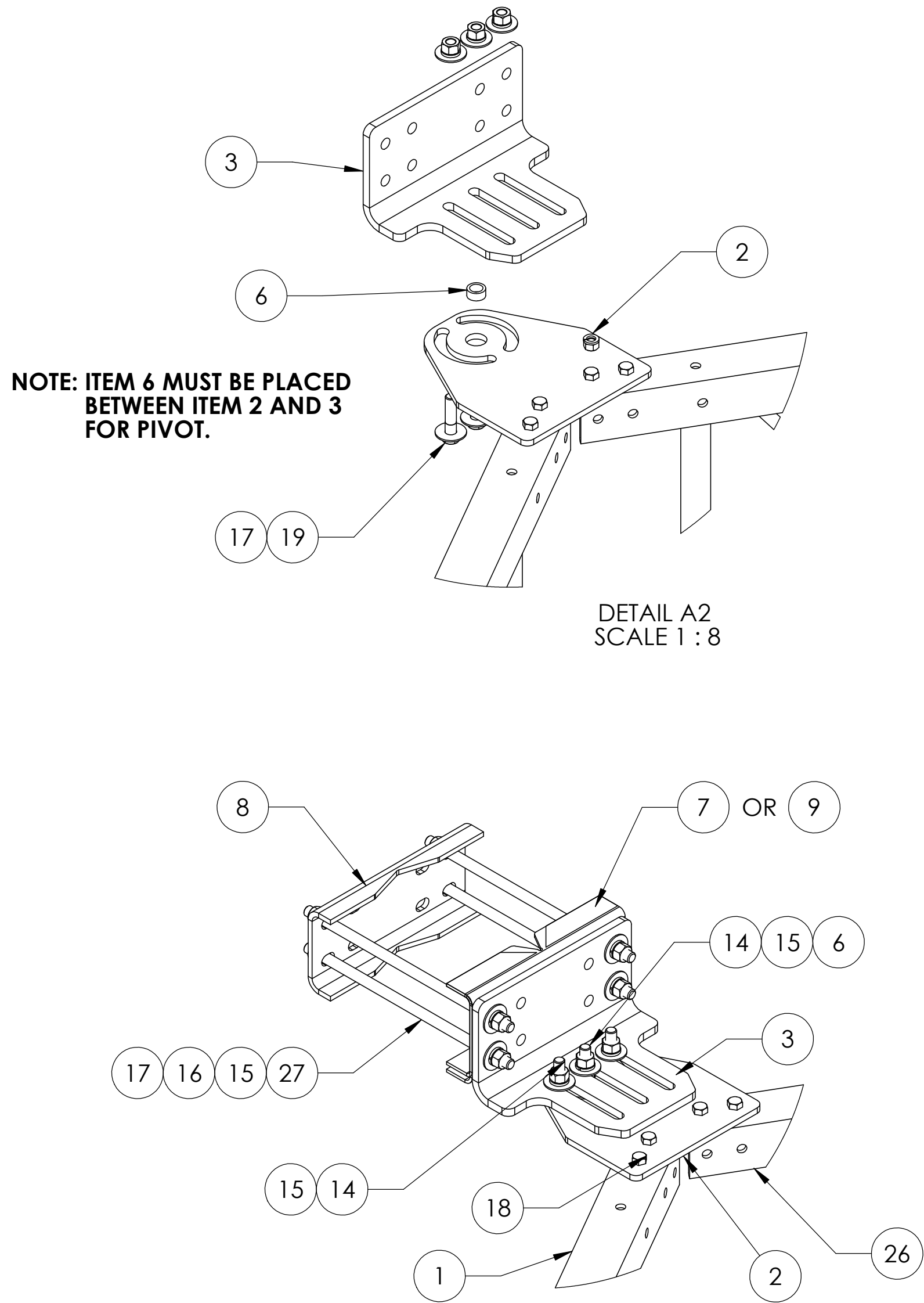
PART NUMBER	DESCRIPTION	SFQV36	SFQV35	SFQV34	SFQV33	WEIGHT
SF-QV7-B	Quik-Vee Sector Frame, 7'-6" Face, Pipes ordered separately	4	-	-	-	372.85 LBS
SF-QV10-B	Quik-Vee Sector Frame, 10'-6" Face, Pipes ordered separately	-	4	-	-	397.66 LBS
SF-QV12-B	Quik-Vee Sector Frame, 12'-6" Face, Pipes ordered separately	-	-	4	-	416.59 LBS
SF-QV14-B	Quik-Vee Sector Frame, 14'-6" Face, Pipes ordered separately	-	-	-	4	436.08 LBS

NOTES:

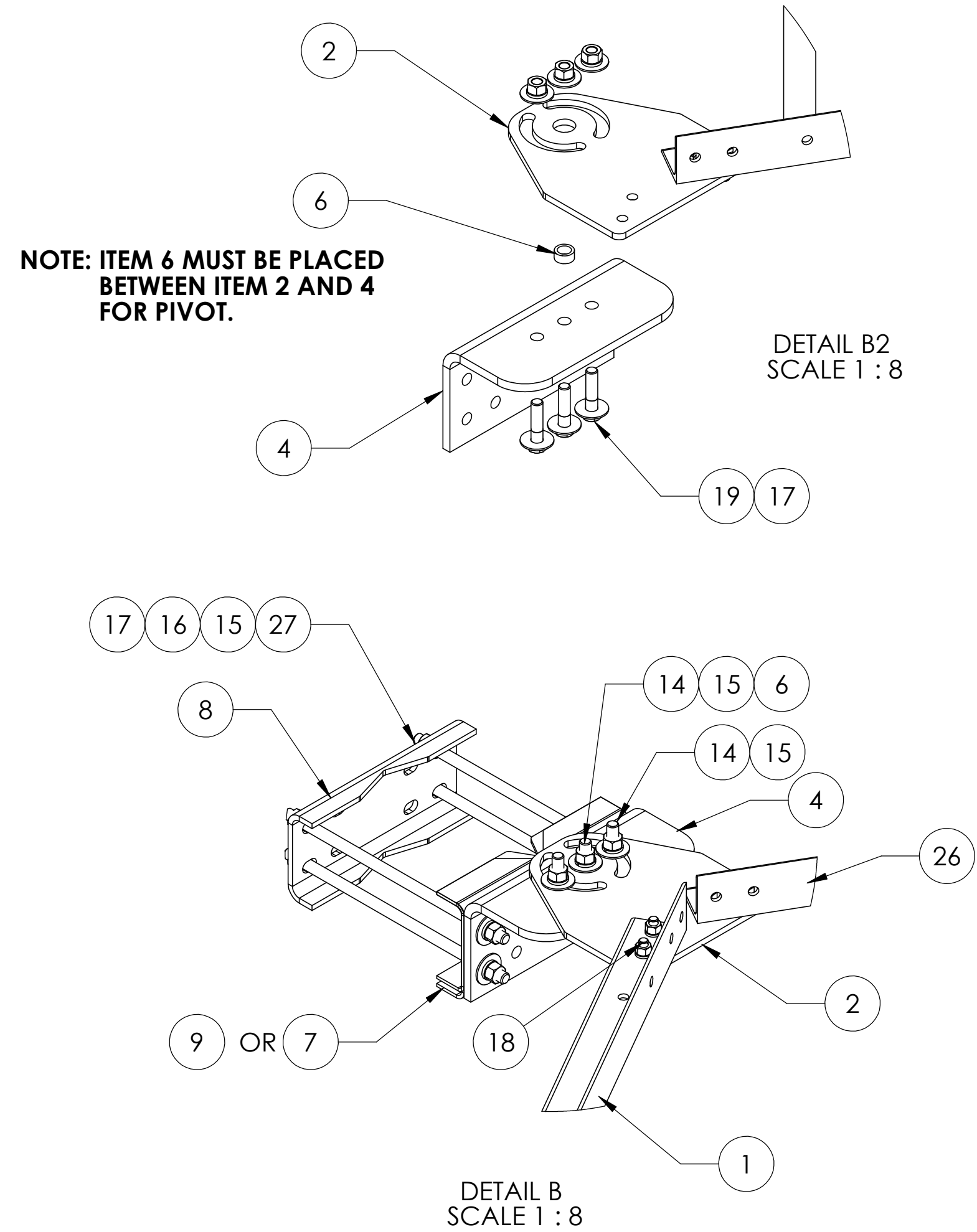
1. ALL METRIC DIMENSIONS ARE IN BRACKETS.
2. DETAILS ON SHEET 3 - 5.
3. OVERALL DIMS ON SHEET 5.
4. ASSEMBLY STEPS ON SHEET 3.
5. FITS TOWER LEGS UP TO 8" OD, 8" ANGLE 60°, OR 6" ANGLE 90°.
6. USE TOWER BRACKETS SFQV12 FOR 90° LEGS AND SFQV14 FOR 60° LEGS.


<small>These drawings and specifications are the proprietary property of CommScope Inc. and may be used only for the specific purpose authorized in writing by CommScope Inc.</small> <small>ALL DIMENSIONS ARE IN INCHES U.O.S. TOLERANCES UNLESS OTHERWISE SPECIFIED:</small> .X = ± .12 ANGLES ±2° .XX = ± .06 FRACTIONS ±1/32 .XXX = ± .03 <small>REMOVE BURRS AND BREAK EDGES .005</small> DO NOT SCALE THIS PRINT	DRAWN BY: MSM CHECKED BY: TP DATE: 11/30/11 REVISION: K	SHEET: 2 of 7 SCALE: NTS MATERIAL: A36,A500,A529 FINISH: GALV A123 WEIGHT: SEE TABLE	PART NUMBER: SF-QV-B SERIES DESCRIPTION: Sector Frame Quick-V DRAWING TYPE: ASSEMBLY DRAWING  WESTCHESTER, IL. 60154 U.S.A.
---	--	--	---

UPPER BRACKET ASSEMBLY

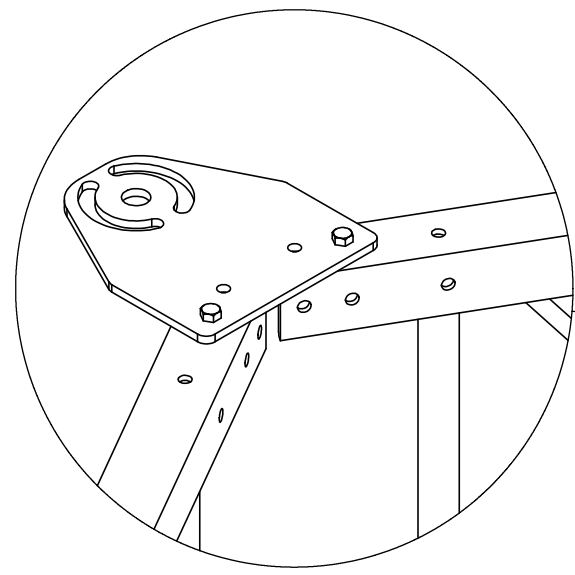


LOWER BRACKET ASSEMBLY

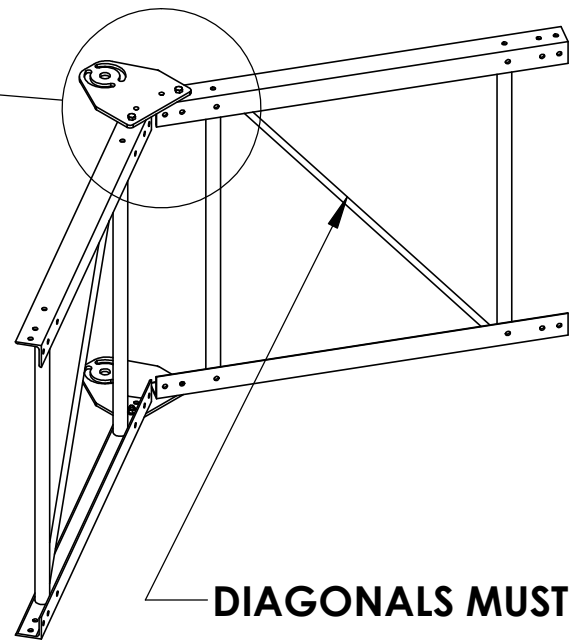


<small>These drawings and specifications are the proprietary property of ANDREW CORPORATION and may be used only for the specific purpose authorized in writing by Andrew Corporation.</small> ALL DIMENSIONS ARE IN INCHES U.O.S. TOLERANCES UNLESS OTHERWISE SPECIFIED: .X = ± .12 ANGLES ±2° .XX = ± .06 FRACTIONS ±1/32 .XXX = ± .03 REMOVE BURRS AND BREAK EDGES .005 DO NOT SCALE THIS PRINT	DRAWN BY: MSM CHECKED BY: TP DATE: 11/30/11 REVISION: K	SHEET: 3 of 7 SCALE: NTS MATERIAL: A36,A500,A529 FINISH: GALV A123 WEIGHT: SEE TABLE	PART NUMBER: SF-QV-B SERIES DESCRIPTION: Sector Frame Quick-V DRAWING TYPE: ASSEMBLY DRAWING  WESTCHESTER, IL. 60154 U.S.A.
---	--	--	---

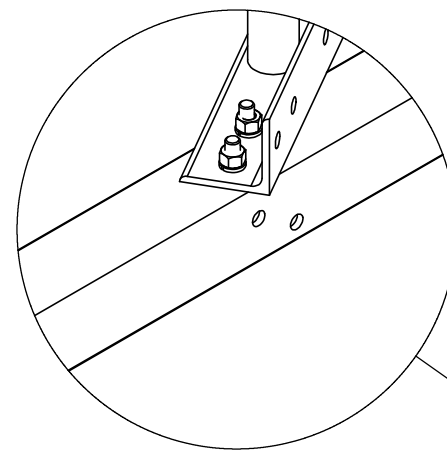
8 7 6 5 4 3 2 1



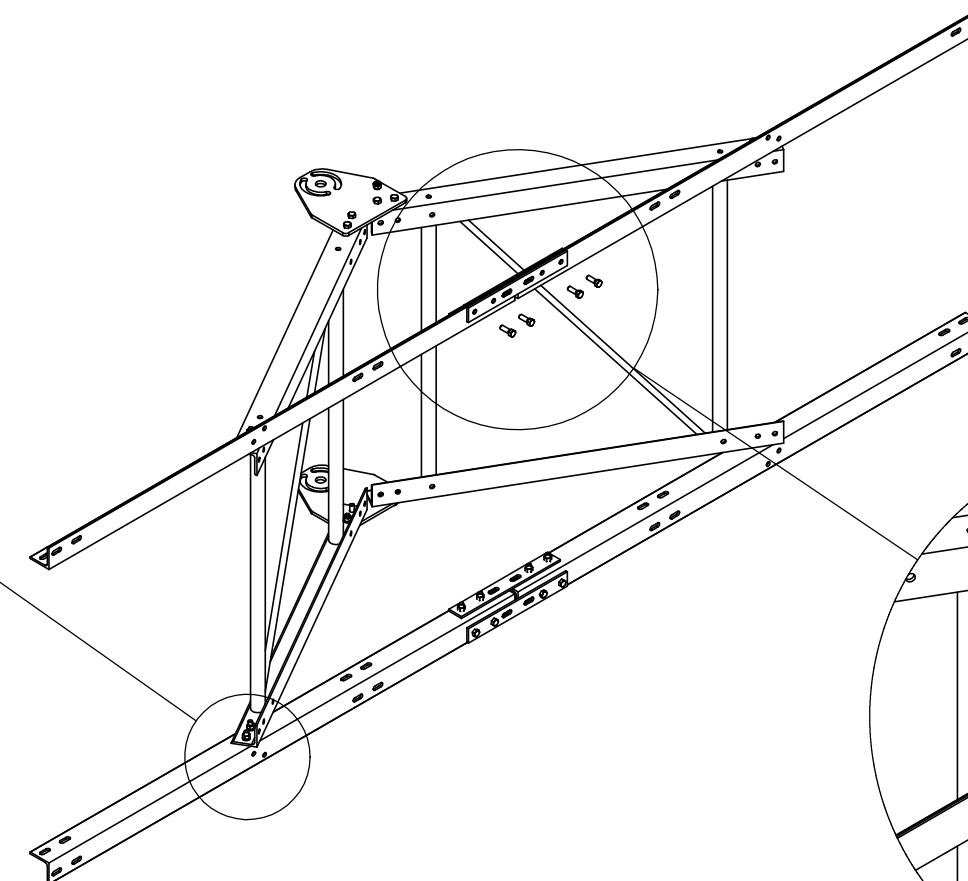
DETAIL F
SCALE 1 : 10



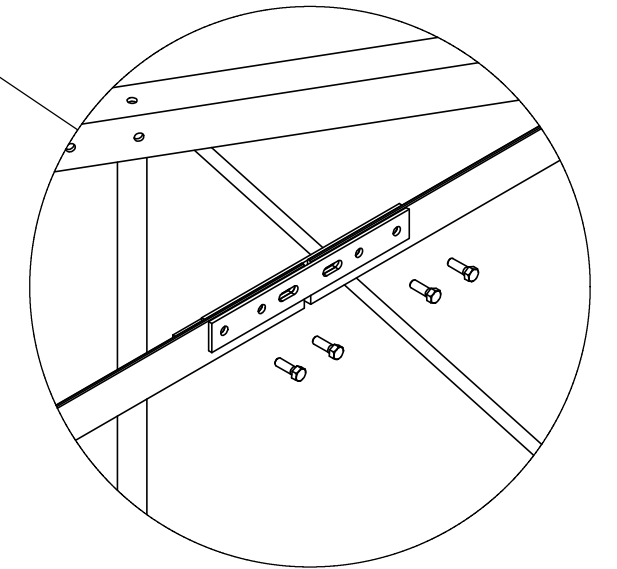
DIAGONALS MUST SLOPE DOWN TO FACE



DETAIL G
SCALE 1 : 8

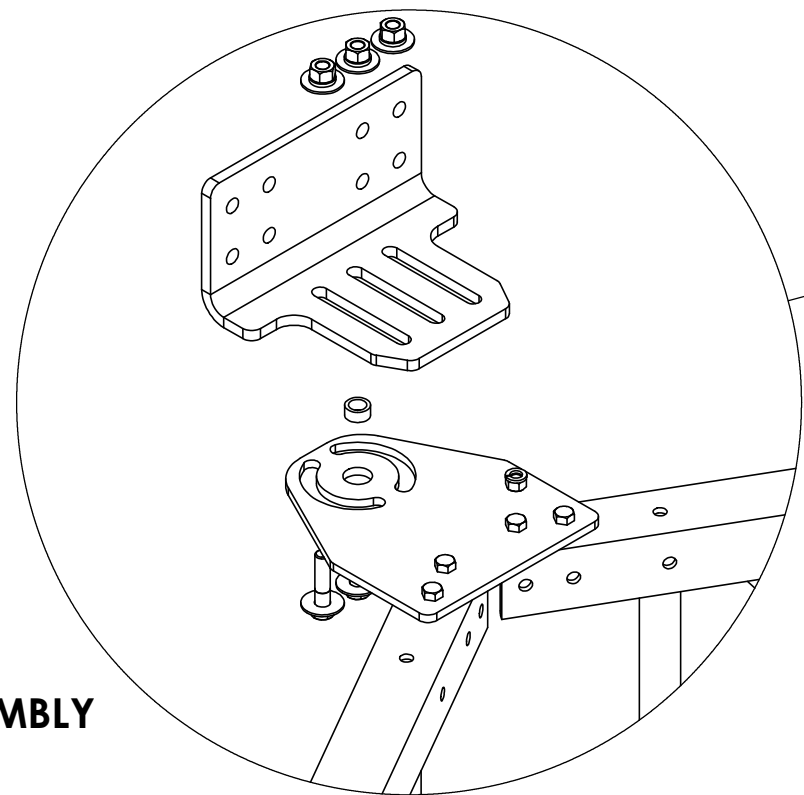


STEP 2 ATTACH FACE ANGLES WITH
16X 1/2" X 1-1/2" BOLTS.

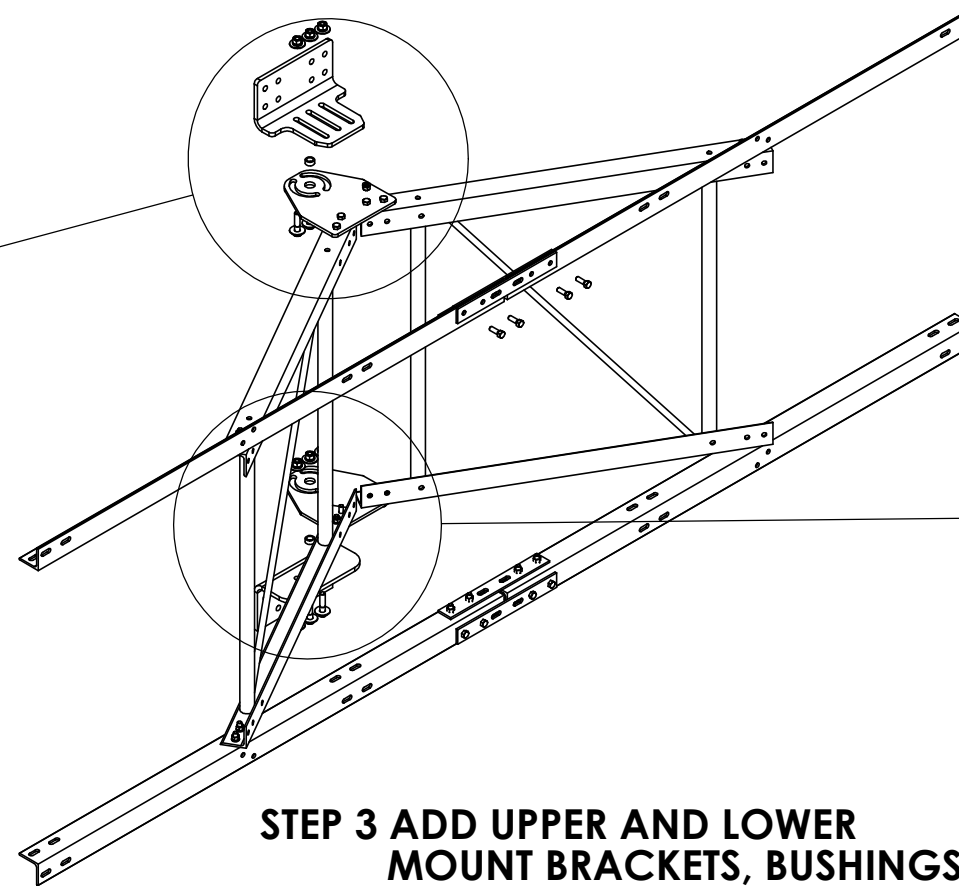


DETAIL H
SCALE 1 : 14

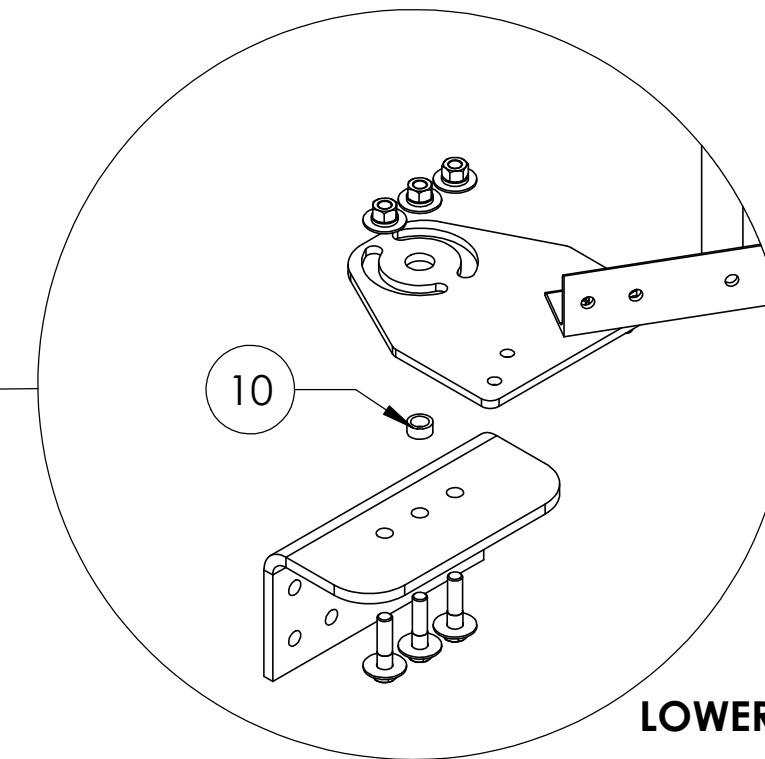
STEP 1 ADD 1/2" X 1-1/2" BOLTS.



UPPER BRACKET ASSEMBLY
DETAIL J
SCALE 1 : 10




STEP 3 ADD UPPER AND LOWER
MOUNT BRACKETS, BUSHINGS
AND 5/8" X 2-1/2" BOLTS AND
WASHERS.



LOWER BRACKET ASSEMBLY
DETAIL K
SCALE 1 : 10

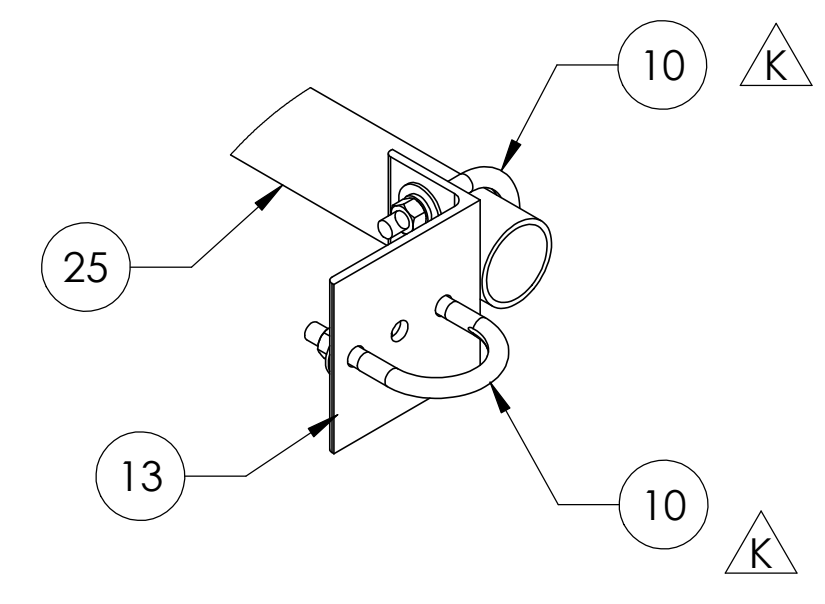
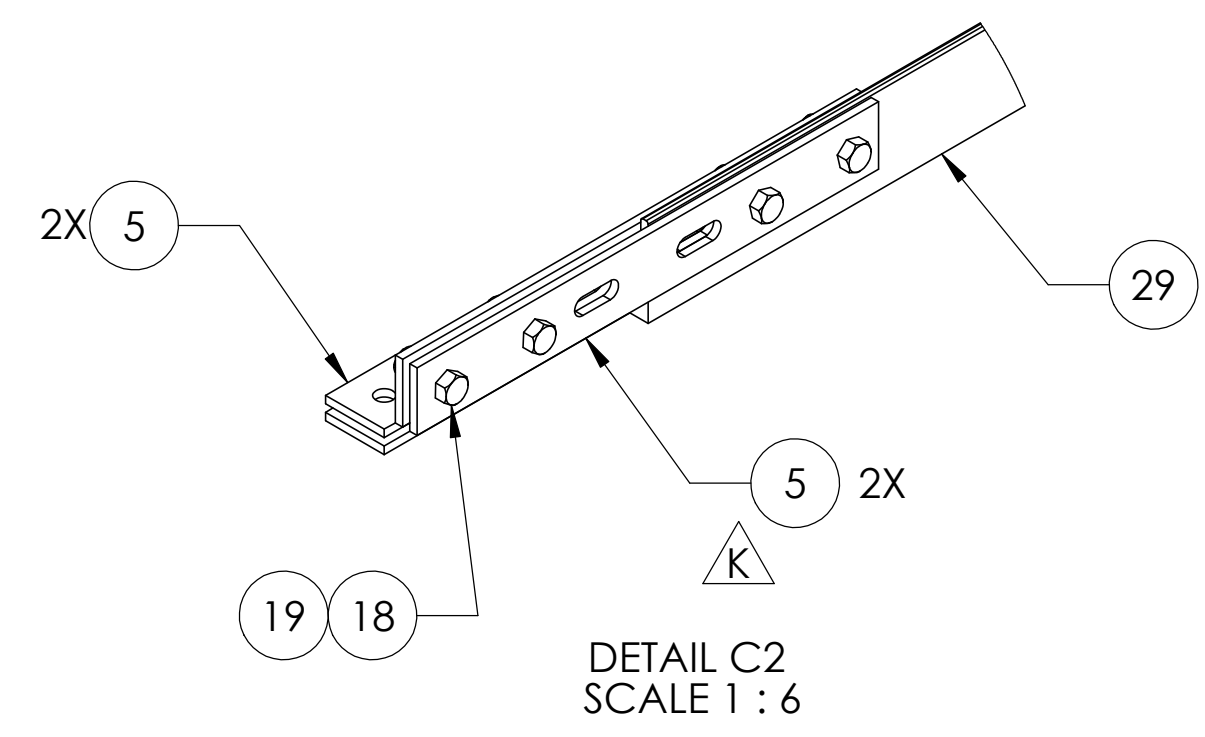
NOTES:

1. TIGHTEN LOWER MOUNT BRACKET CENTER BOLT AND BUSHING ALLOWING SWIVEL ADJUSTMENT.
2. TIGHTEN UPPER MOUNT BRACKET AND CENTER BOLT AFTER SETTING TAPER.
3. AFTER SETTING AZMUTH TIGHTEN MOUNT BRACKETS OUTER SWIVEL ADJSUTMENT BOLTS.

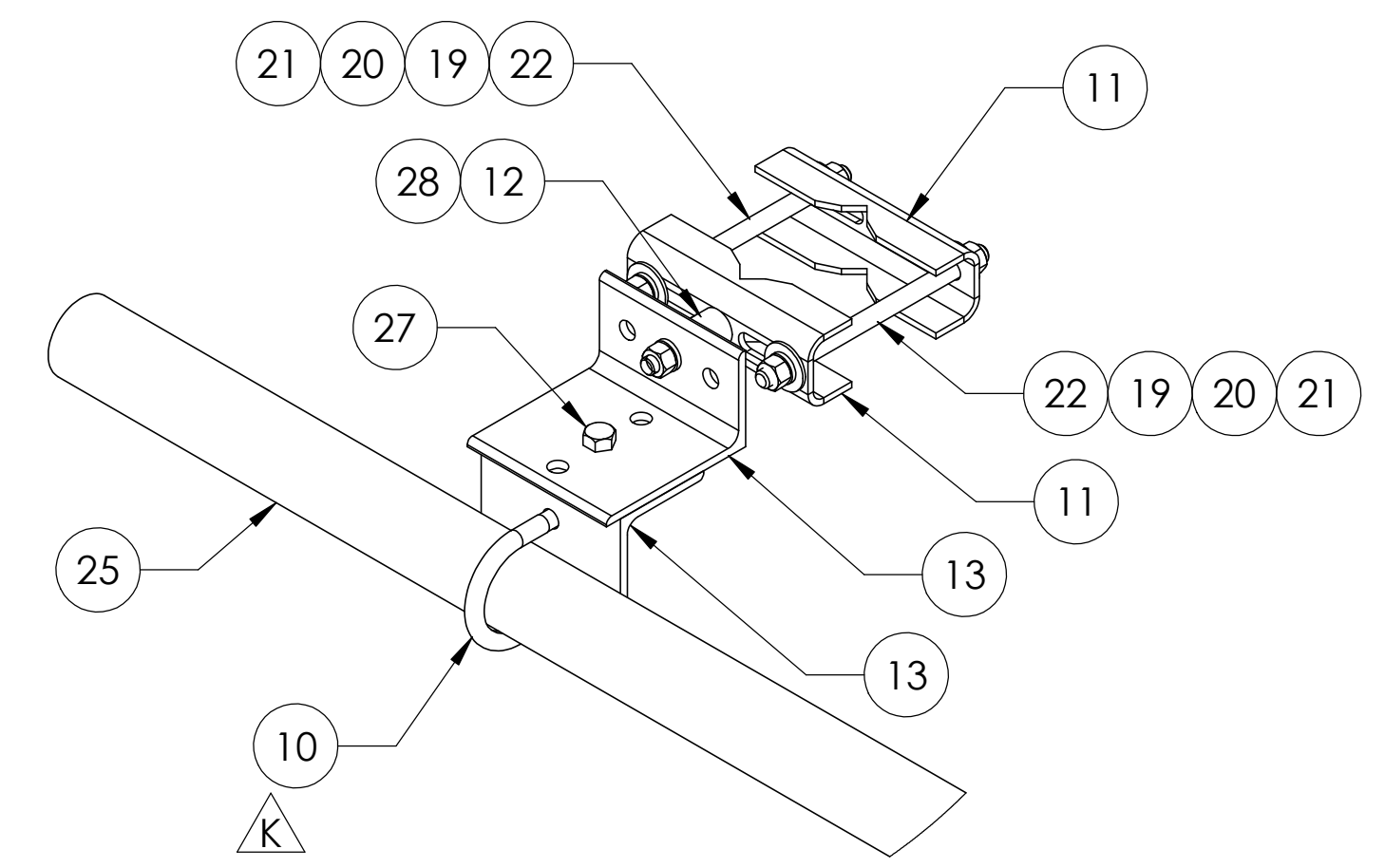
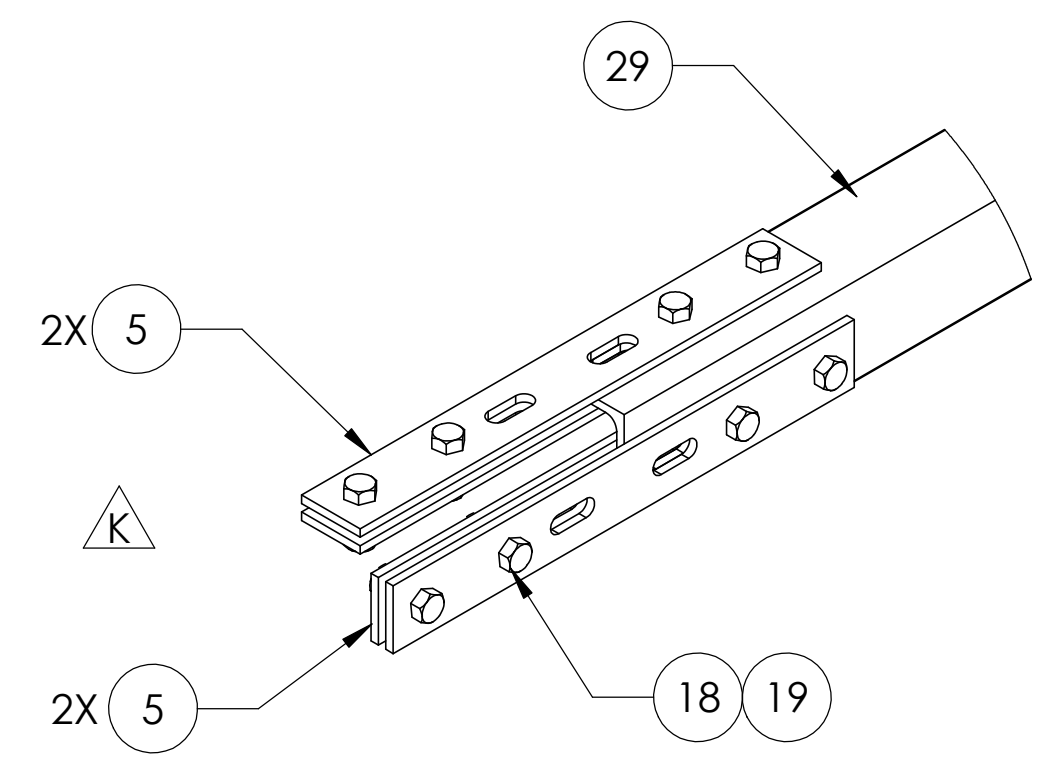
<small>These drawings and specifications are the proprietary property of ANDREW CORPORATION and may be used only for the specific purpose authorized in writing by Andrew Corporation.</small> <small>ALL DIMENSIONS ARE IN INCHES U.O.S. TOLERANCES UNLESS OTHERWISE SPECIFIED:</small> .X = ± .12 ANGLES ±2' .XX = ± .06 FRACTIONS ±1/32 .XXX = ± .03 REMOVE BURRS AND BREAK EDGES .005 DO NOT SCALE THIS PRINT	DRAWN BY: MSM CHECKED BY: TP DATE: 11/30/11 REVISION: K	SHEET: 4 of 7 SCALE: NTS MATERIAL: A36, A53, A529 FINISH: GALV A123 WEIGHT: SEE TABLE	PART NUMBER: SF-QV-B SERIES DESCRIPTION: Sector Frame Quick-V DRAWING TYPE: ASSEMBLY DRAWING  WESTCHESTER, IL. 60154 U.S.A.
---	--	---	---


8 7 6 5 4 3 2 1

8 7 6 5 4 3 2 1

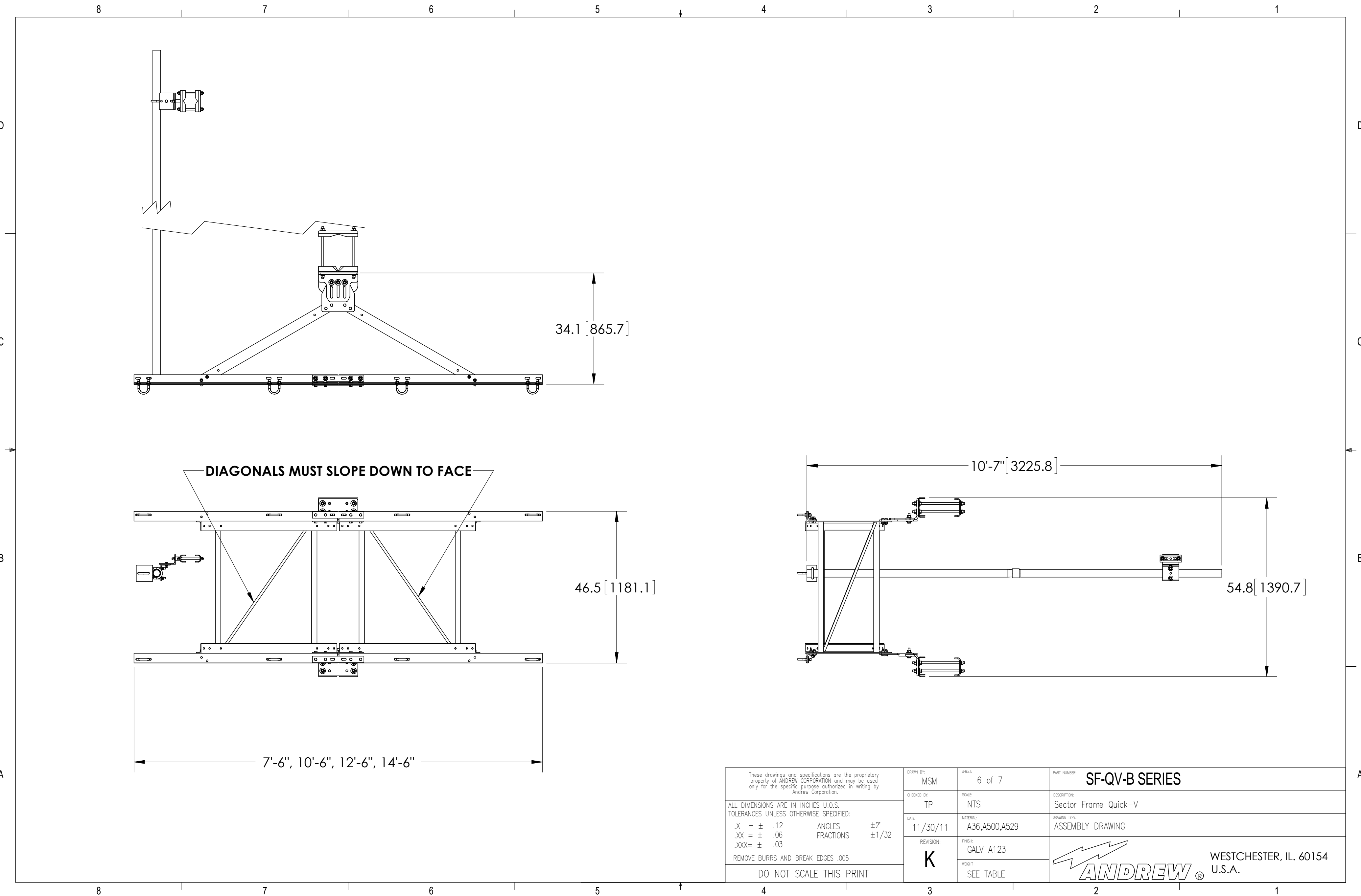



UPPER AND LOWER FACE JOINT DETAIL



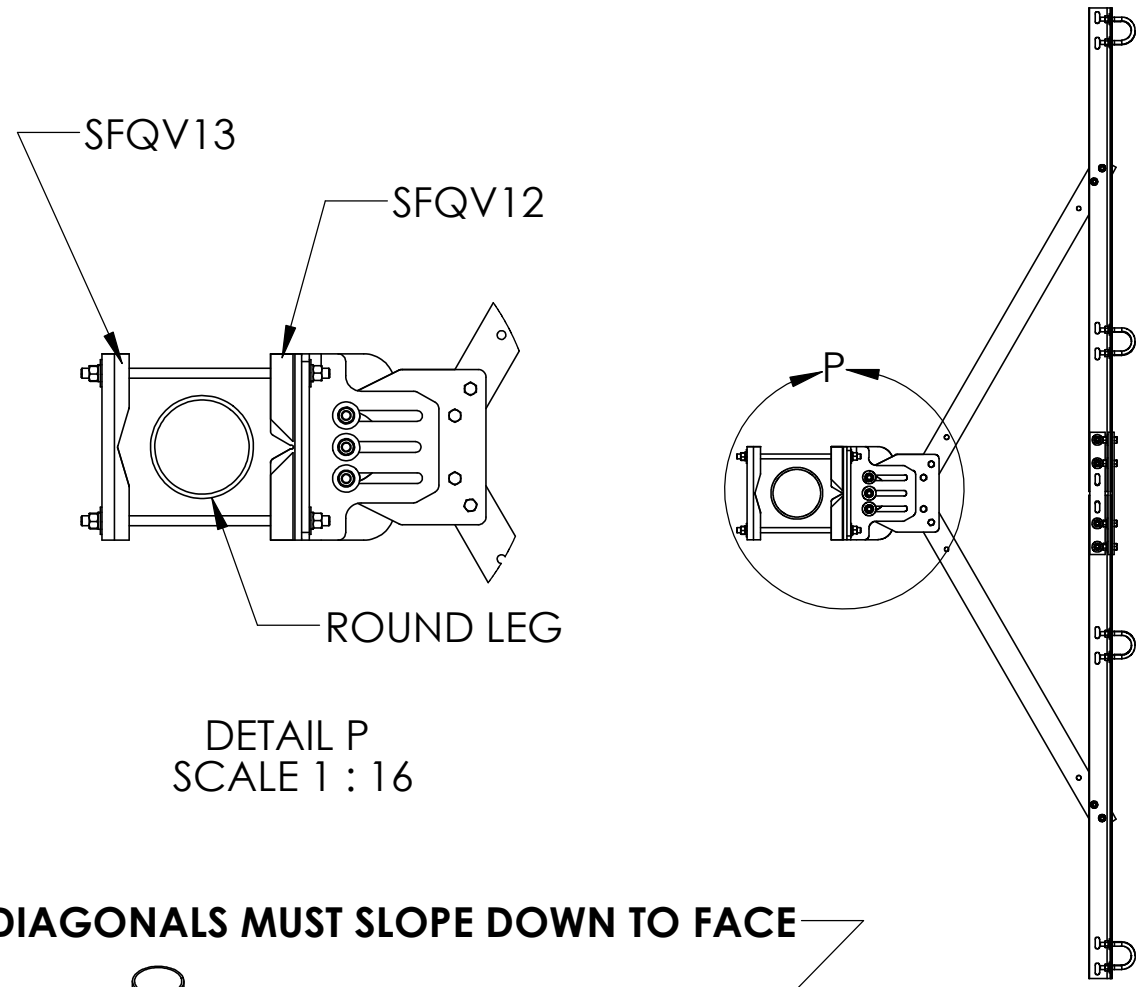
<p>These drawings and specifications are the proprietary property of ANDREW CORPORATION and may be used only for the specific purpose authorized in writing by Andrew Corporation.</p> <p>ALL DIMENSIONS ARE IN INCHES U.O.S. TOLERANCES UNLESS OTHERWISE SPECIFIED: .X = ± .12 ANGLES ±2' .XX = ± .06 FRACTIONS ±1/32 .XXX = ± .03</p> <p>REMOVE BURRS AND BREAK EDGES .005</p> <p>DO NOT SCALE THIS PRINT</p>	<p>DRAWN BY: MSM</p>	<p>SHEET: 5 of 7</p>	<p>PART NUMBER: SF-QV-B SERIES</p>
	<p>CHECKED BY: TP</p>	<p>SCALE: NTS</p>	<p>DESCRIPTION: Sector Frame Quick-V</p>
	<p>DATE: 11/30/11</p>	<p>MATERIAL: A36,A500,A529</p>	<p>DRAWING TYPE: ASSEMBLY DRAWING</p>
	<p>REVISION: K</p>	<p>FINISH: GALV A123</p>	 <p>WESTCHESTER, IL. 60154 U.S.A.</p>
		<p>WEIGHT: SEE TABLE</p>	

8 7 6 5 4 3 2 1

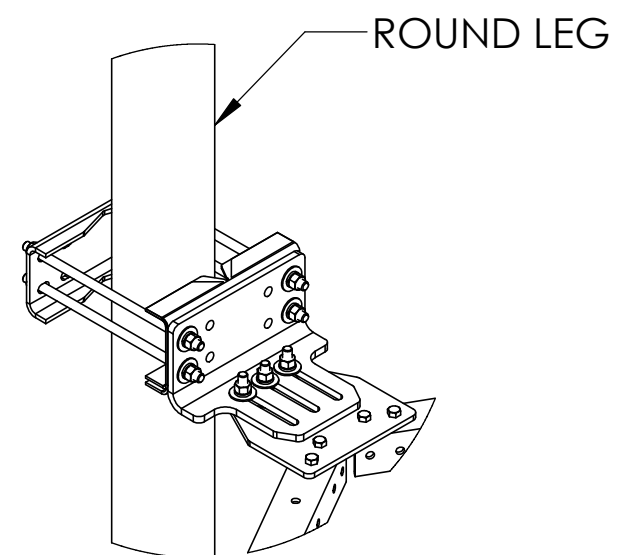
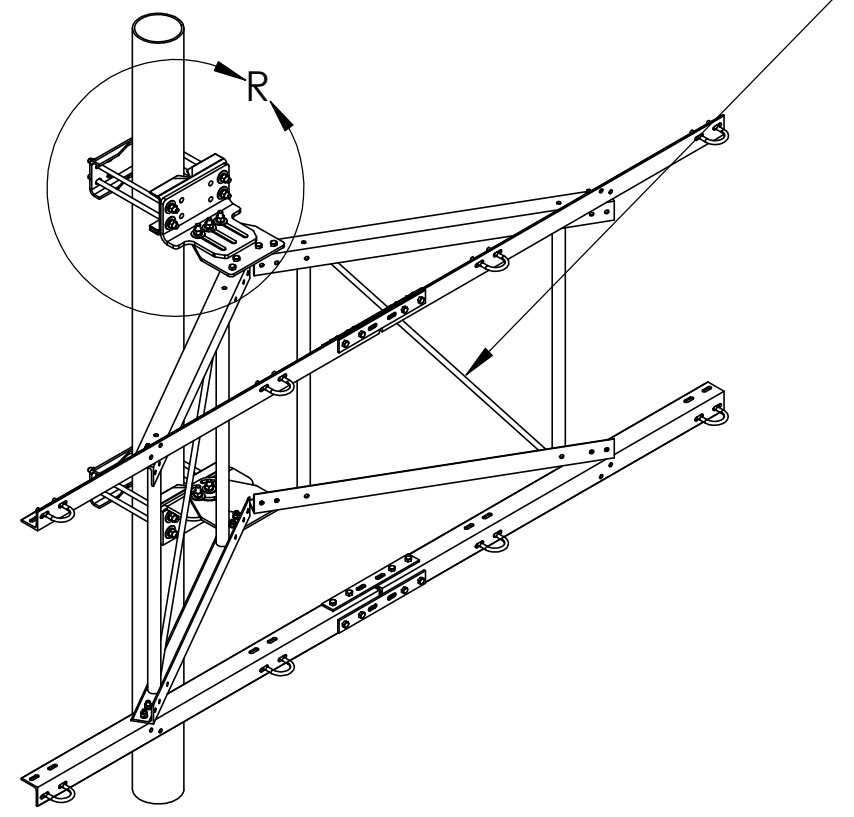


These drawings and specifications are the proprietary property of ANDREW CORPORATION and may be used only for the specific purpose authorized in writing by Andrew Corporation. ALL DIMENSIONS ARE IN INCHES U.O.S. TOLERANCES UNLESS OTHERWISE SPECIFIED: .X = ± .12 ANGLES ±2' .XX = ± .06 FRACTIONS ±1/32 .XXX = ± .03 REMOVE BURRS AND BREAK EDGES .005 DO NOT SCALE THIS PRINT	DRAWN BY: MSM	SHEET: 6 of 7	PART NUMBER: SF-QV-B SERIES
	CHECKED BY: TP	SCALE: NTS	DESCRIPTION: Sector Frame Quick-V
	DATE: 11/30/11	MATERIAL: A36,A500,A529	DRAWING TYPE: ASSEMBLY DRAWING
	REVISION: K	FINISH: GALV A123 WEIGHT: SEE TABLE	 WESTCHESTER, IL. 60154 U.S.A.

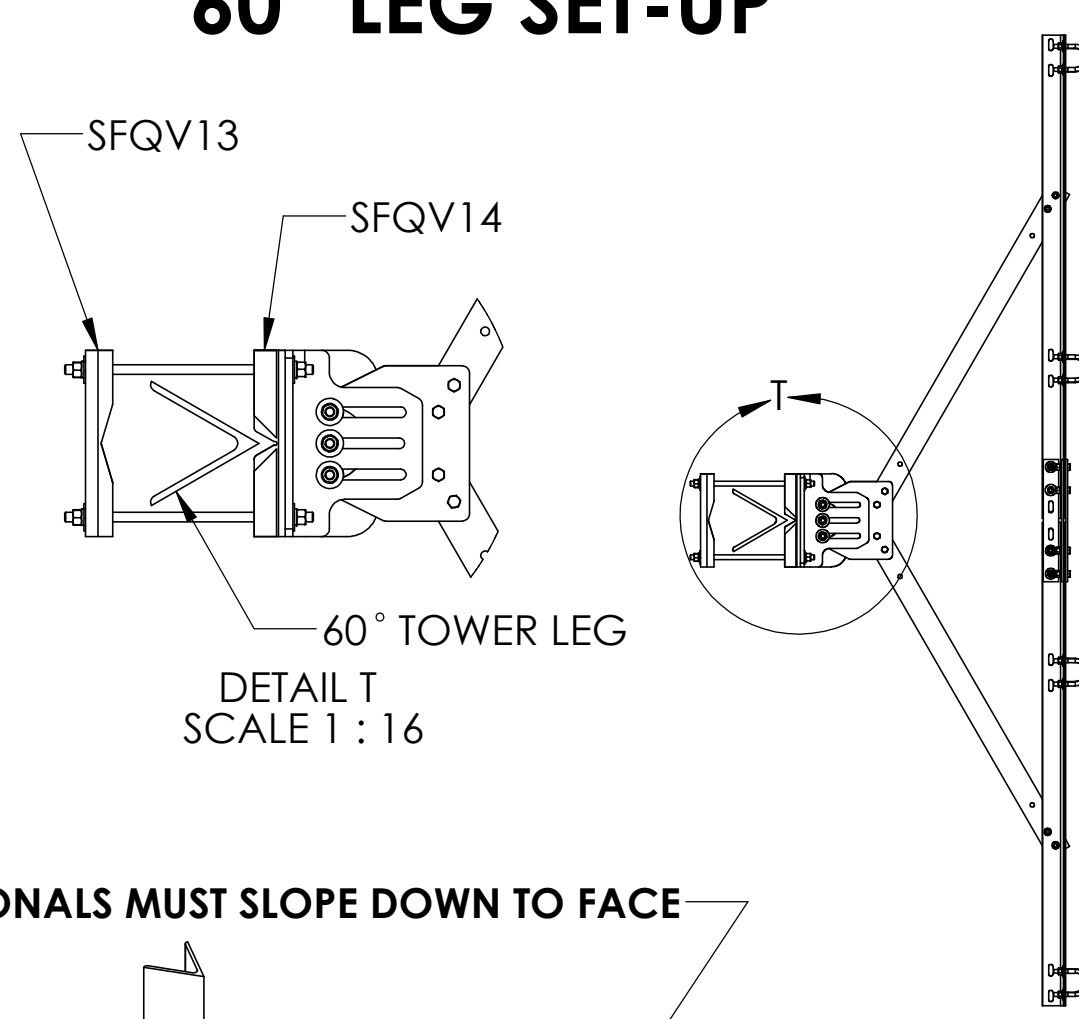
ROUND LEG SET-UP



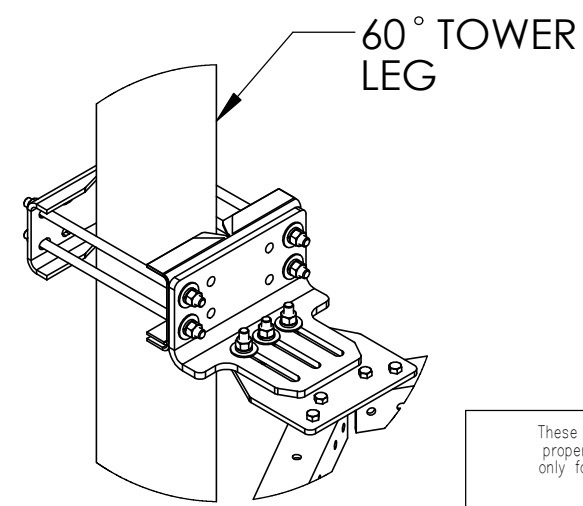
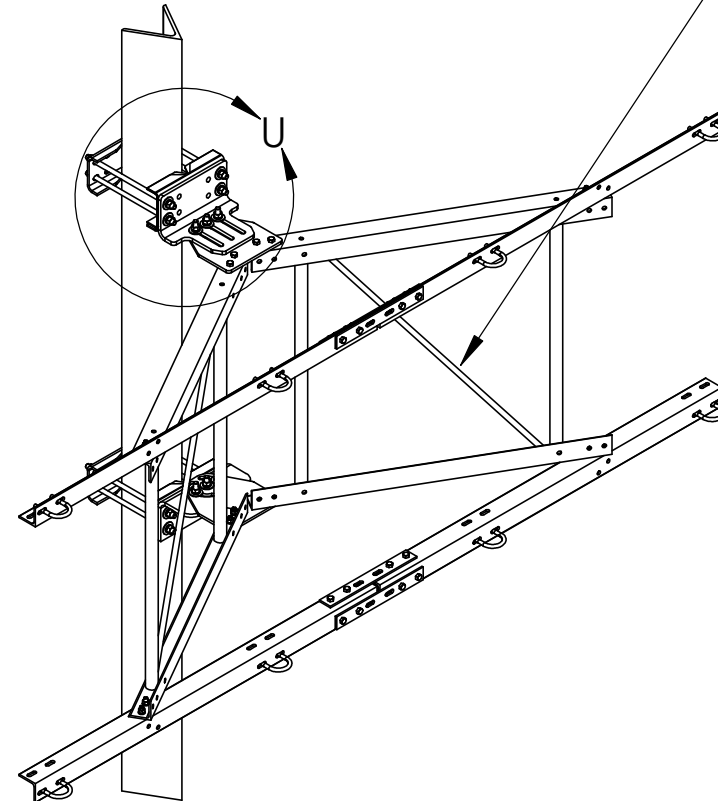
DIAGONALS MUST SLOPE DOWN TO FACE



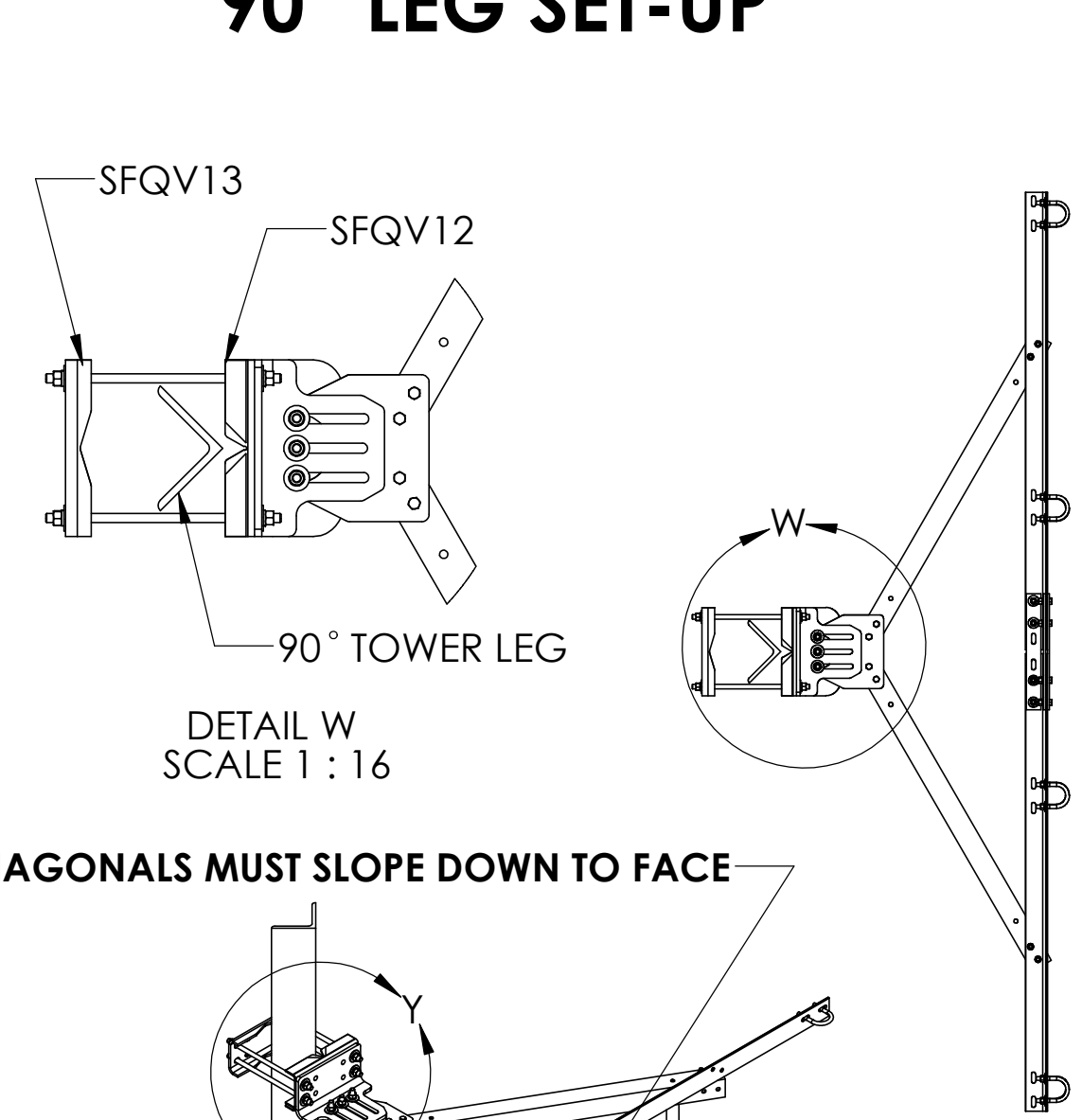
60° LEG SET-UP



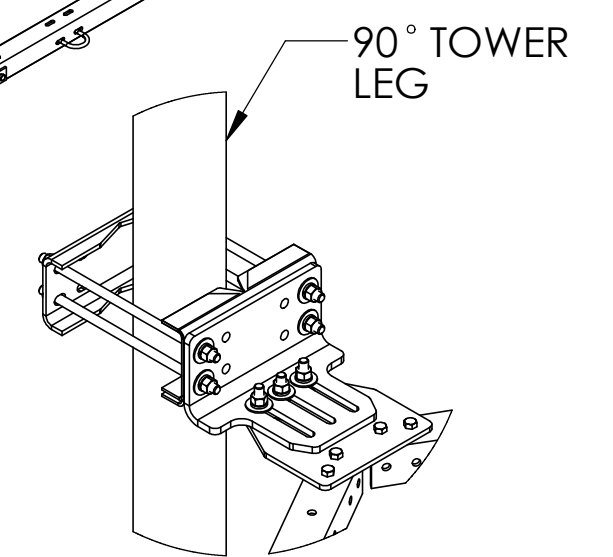
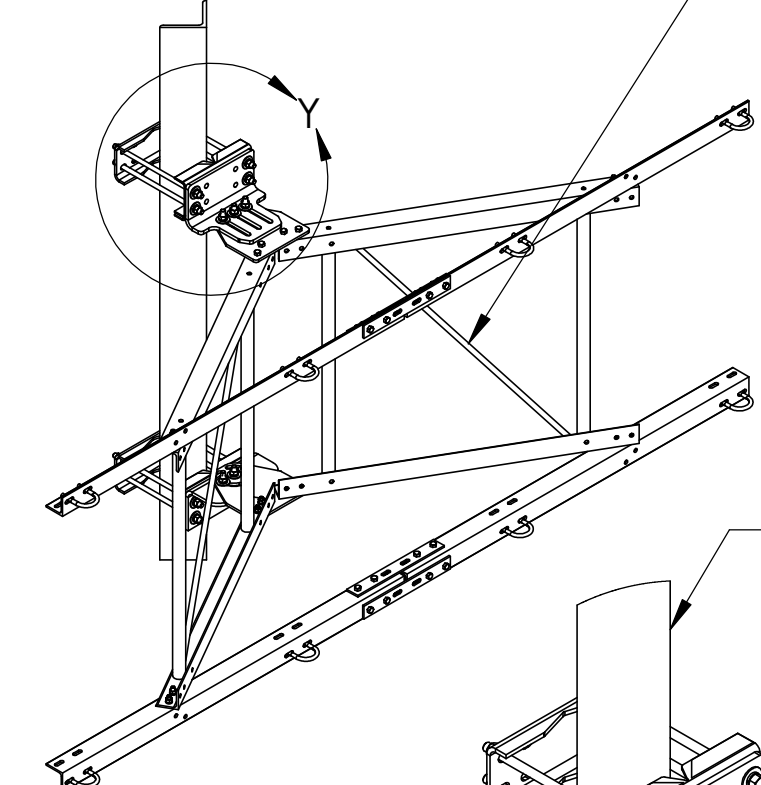
DIAGONALS MUST SLOPE DOWN TO FACE



90° LEG SET-UP




DIAGONALS MUST SLOPE DOWN TO FACE



These drawings and specifications are the proprietary property of ANDREW CORPORATION and may be used only for the specific purpose authorized in writing by Andrew Corporation.

ALL DIMENSIONS ARE IN INCHES U.O.S.
TOLERANCES UNLESS OTHERWISE SPECIFIED:
.X = ± .12 ANGLES ±2'
.XX = ± .06 FRACTIONS ±1/32
.XXX = ± .03
REMOVE BURRS AND BREAK EDGES .005

DO NOT SCALE THIS PRINT

DRAWN BY: MSM	SHEET: 7 of 7	PART NUMBER: SF-QV-B SERIES
CHECKED BY: TP	SCALE: NTS	DESCRIPTION: Sector Frame Quick-V
DATE: 11/30/11	MATERIAL: A36,A500,A529	DRAWING TYPE: ASSEMBLY DRAWING
REVISION: K	FINISH: GALV A123	 WESTCHESTER, IL. 60154 U.S.A.
	WEIGHT: SEE TABLE	