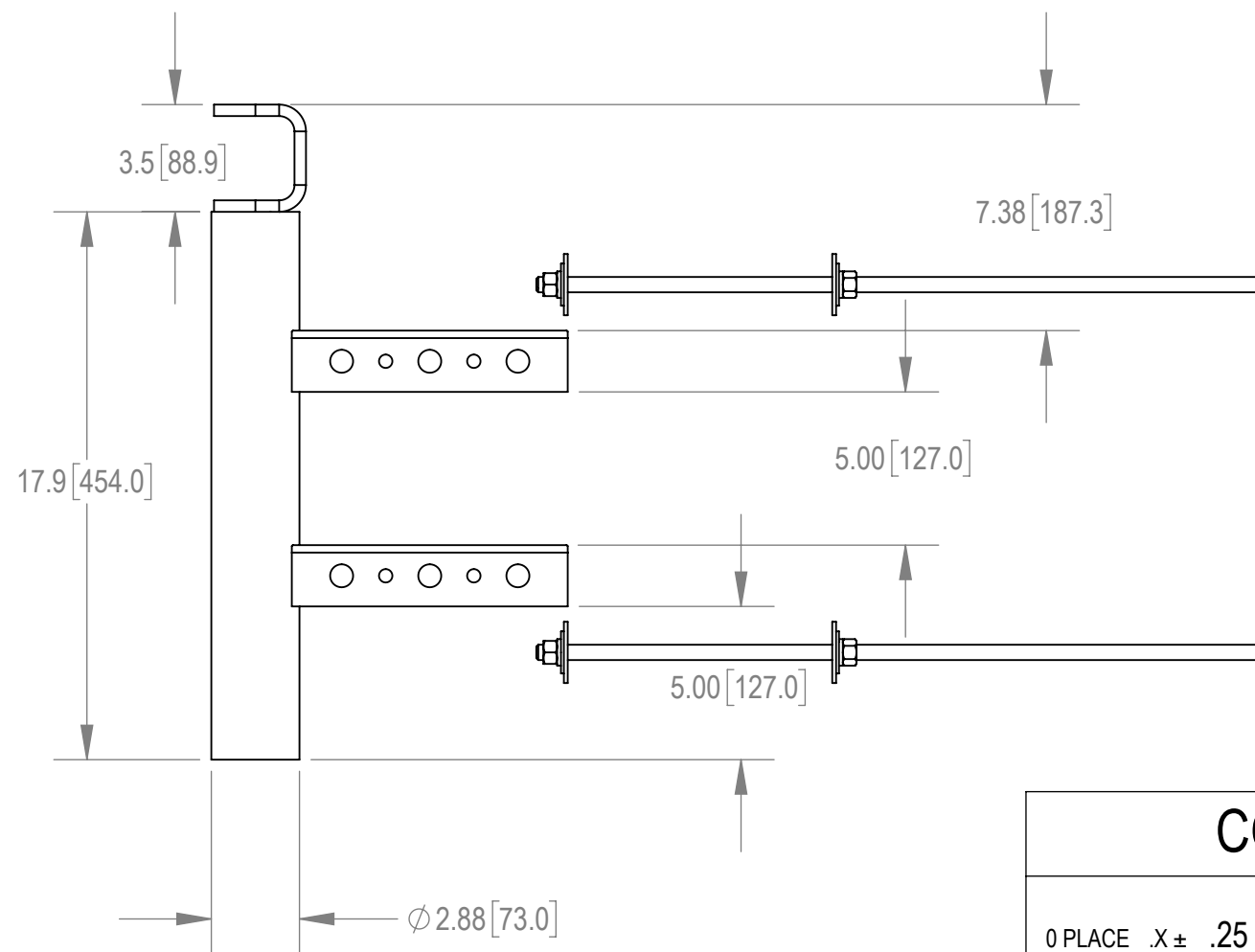
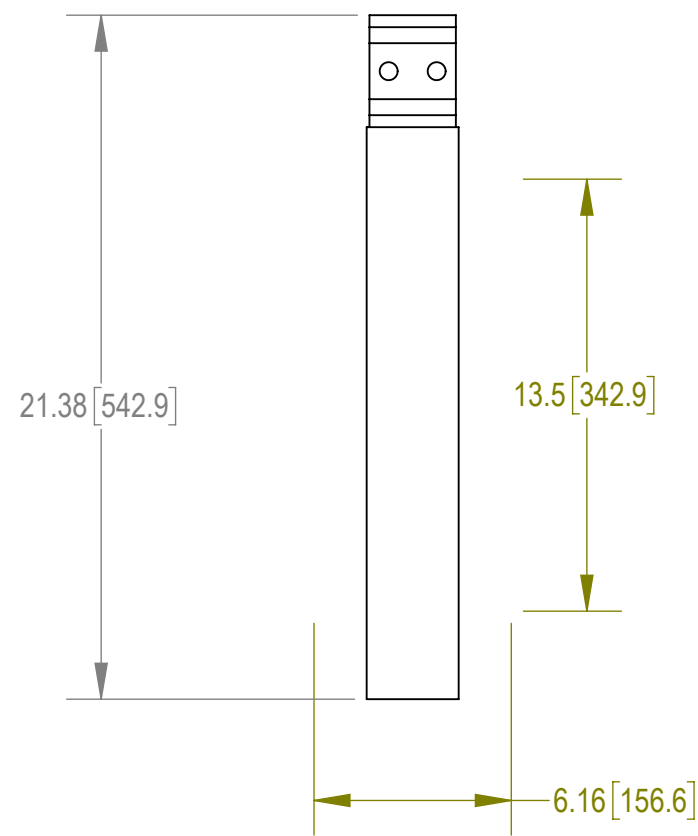
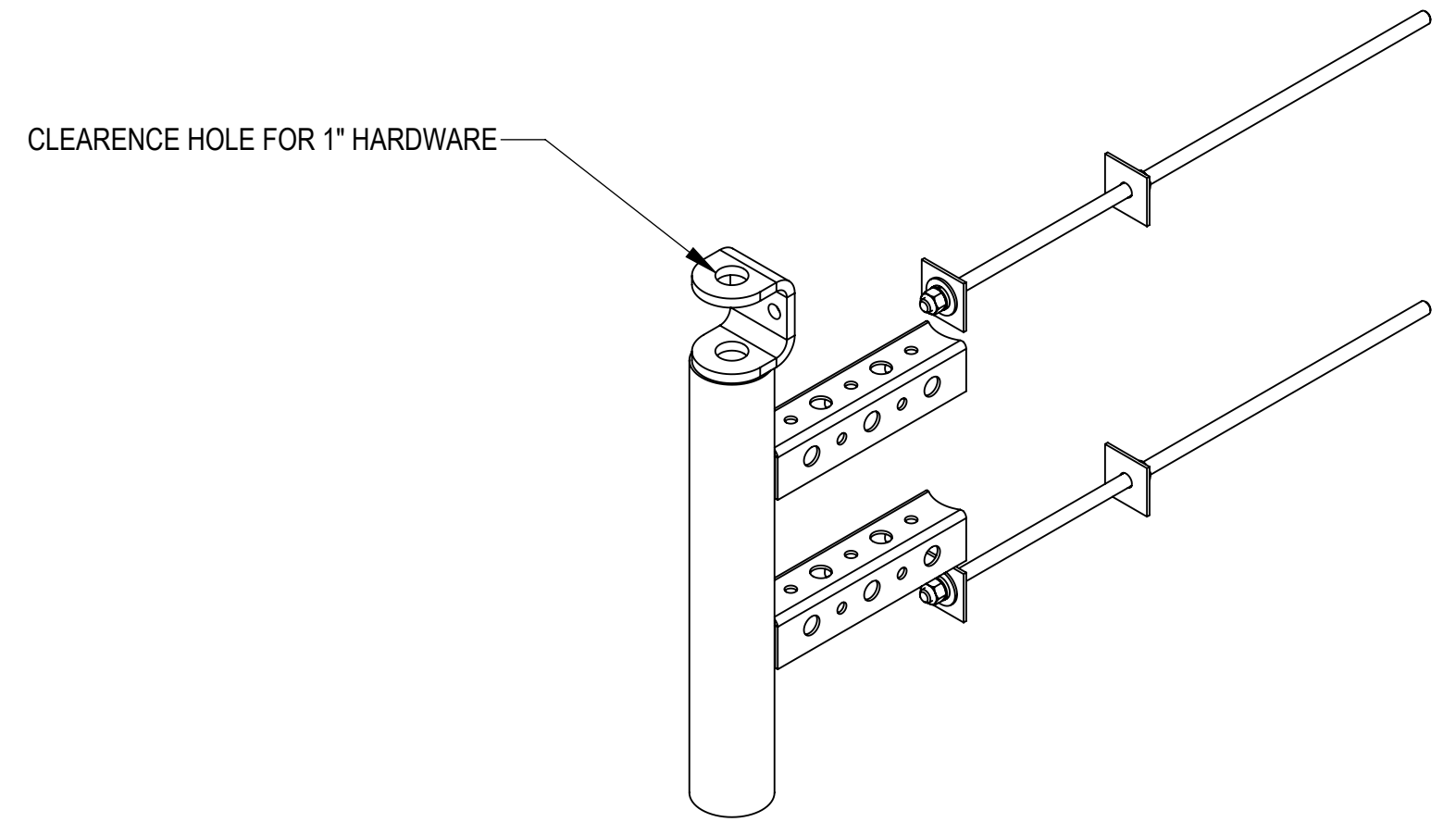
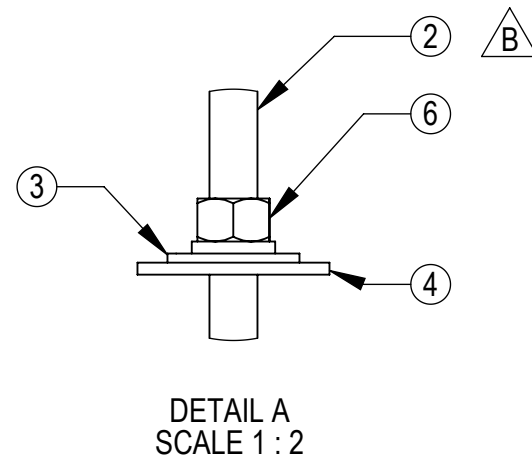
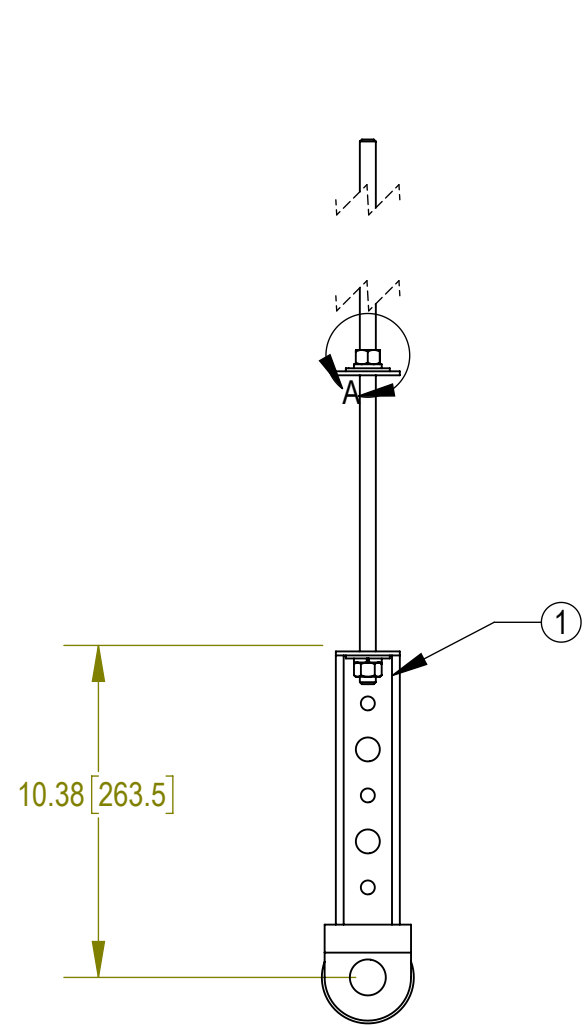


NOTES:

- 1.0 GENERAL
  - 1.1 ALL METRIC DIMENSIONS ARE IN BRACKETS
  - 1.2 FOR PATENTS, SEE WWW.CS-PAT.COM
- 2.0 DESIGN NOTES
- 3.0 MANUFACTURING/SPECIAL REQUIRMENTS
- 4.0 TEST
- 5.0 PACKAGING

| REVISIONS |            |                          |        |          |
|-----------|------------|--------------------------|--------|----------|
| REV.      | ECN        | DESCRIPTION              | BY     | DATE     |
| A         | 8000033832 | INITIAL RELEASE          | MRC    | 02/19/19 |
| B         | 8000034748 | UPDATED ALLTHREAD TO 24" | ES1081 | 04/09/19 |



| ITEM NO. | PART NUMBER | DESCRIPTION                                  | QTY. | WEIGHT    | NOTE NO. |
|----------|-------------|--|------|-----------|----------|
| 1        | MTC406801   | WELDMENT, RRU SMALL CELL, SINGLE MOUNT       | 1    | 10.20 LBS |          |
| 2        | MT37924     | 1/2" X 24" GALV THREADED ROD                 | 2    | 1.33 LBS  |          |
| 3        | GWF-04      | 1/2" GALV FLAT WASHER                        | 4    | 0.03 LBS  |          |
| 4        | SW-12       | BACKING PLATE, .125" X 2" X 2" W/ 9/16" HOLE | 4    | 0.13 LBS  |          |
| 5        | GWL-04      | 1/2" GALV LOCK WASHER                        | 4    | 0.01 LBS  |          |
| 6        | GN-04       | 1/2" GALV HEX NUT                            | 4    | 0.04 LBS  |          |

|              |         |                     |
|--------------|---------|---------------------|
| DENSITY      | 0.02    | lbs/in <sup>3</sup> |
| MASS         | 98.44   | lbs                 |
| VOLUME       | 4023.42 | in <sup>3</sup>     |
| SURFACE AREA |         | in <sup>2</sup>     |
| HEIGHT       |         |                     |
| LENGTH       |         |                     |
| WIDTH        |         |                     |

**COMMSCOPE, INC. OF NORTH CAROLINA**

|   |                     |                               |              |   |          |                 |         |        |
|---|---------------------|-------------------------------|--------------|---|----------|-----------------|---------|--------|
| TOLERANCES  |                     | SAP MATERIAL MASTER           |              |   |          |                 |         |        |
| 0 PLACE .X ± .25  | 2 PLACE .XXX ± 0.06 | <b>SCSM-5G</b>                |              |   |          |                 |         |        |
| 1 PLACE .XX ± 0.12  | ANGLES ± 2°         |                               |              |   |          |                 |         |        |
| FINISH<br>GALV A123   |                     | MATERIAL<br>A1011/A1018, A500 |              |   |          |                 |         |        |
| UNLESS OTHERWISE SPECIFIED<br>DIMENSIONS ARE IN INCHES<br>INTERPRET PER ANSI Y 14.5M-1994 |                     | NAME                          | DATE         | <b>MOUNT, SMALL CELL, 5G SIDE<br/>ARM</b> |          |                 |         |        |
|   |                     | CE MTC                        | 02/11/19     |   |          |                 |         |        |
|   |                     | RW ES1081                     | 04/16/2019   |   |          |                 |         |        |
|   |                     | RV MC1107                     | 04/26/2019   |   |          |                 |         |        |
| AD  | 05/03/2019          | SCALE                         | DOCUMENT NO. | <b>SCSM-5G</b>                            |          |                 |         |        |
| RE RD1048   |                     | 1:10                          |              |   |          |                 |         |        |
| ECN 008000034748  | SIZE                | WORK AREA 24                  | MODEL        | DRAWING                                   |          | SHEET<br>1 OF 2 |         |        |
|   | <b>C</b>            |                               | VERSION      | STATUS                                    | REVISION |                 | VERSION | STATUS |
|   |                     |                               | 01           | RE  | B        | 01              | RE      | B      |

4

3

2

1

NOTES:

SOLD SEPARATELY

CAN BE USED WITH UP TO A 20" DIAMETER POLE

- 2
- 6
- 5
- 3
- 4

DETAIL B  
SCALE 1:2


OPTIONAL  
BANDING SLOTS  
.375" X 1.50"

SOLD SEPARATELY

COMMSCOPE, INC. OF NORTH CAROLINA

TITLE  
MOUNT, SMALL CELL, 5G SIDE ARM

|                  |                     |                                |
|------------------|---------------------|--------------------------------|
| SIZE<br><b>C</b> | SCALE<br><b>1:4</b> | DOCUMENT NO.<br><b>SCSM-5G</b> |
|------------------|---------------------|--------------------------------|

|   |               |              |               |                 |
|---|---------------|--------------|---------------|-----------------|
|  | DRAWING       |              |               | SHEET<br>2 OF 2 |
|   | VERSION<br>01 | STATUS<br>RE | REVISION<br>B |                 |

© 2019 CommScope, Inc. Confidential

4

3

2

1

D

D

C

C

B

B

A

A