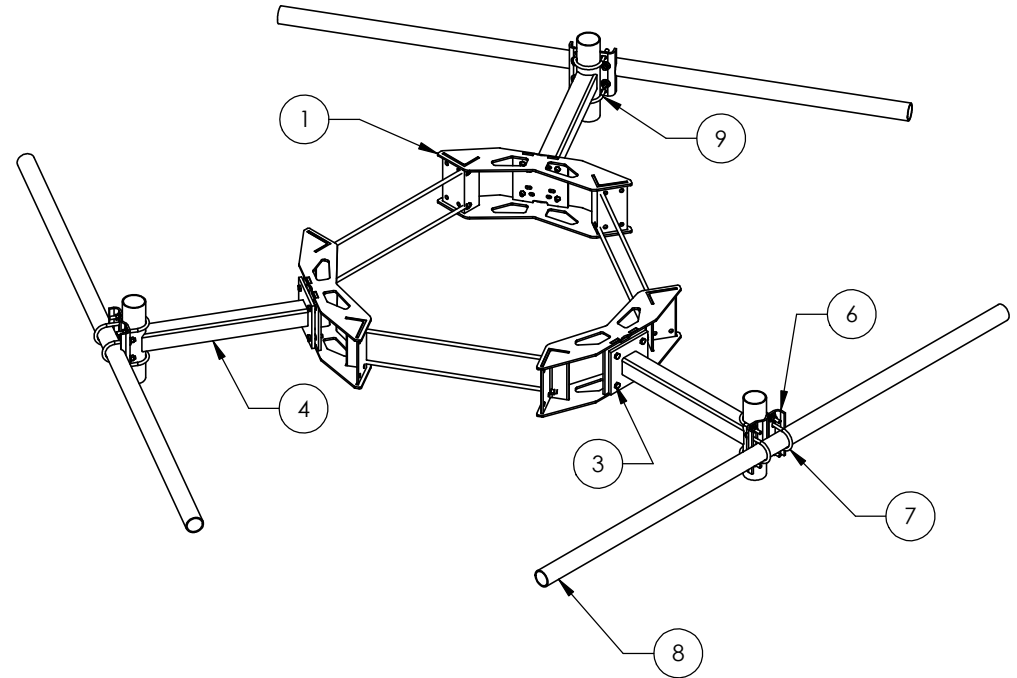


ITEM	PART NO.	DESCRIPTION	QTY.	WEIGHT
1	MC-RM3060-3	Monopole Ringmount 30"-60"	1	262.40 LBS
2	MT197H	HARDWARE KIT (NEXT ITEM)	3	
3	GB-0524A	5/8" X 2-1/2" GALV. BOLT KIT (A325)	12	0.32 LBS
4	MT197.01	36" SINGLE SUPPORT ARM	3	62.84 LBS
5	MT216NSH	HARDWARE KIT (ITEMS 6-8)	3	
6	MT216.13	CENTER BRACKET	3	11.80 LBS
7	GUB-53560	5/8" X 3-5/8" X 6" GALV U-BOLT	6	1.30 LBS
8	MT-547-126	Ø3.5" O.D. X 126 PIPE	3	81.21 LBS
9	GUB-5456	5/8" X 4-5/8" X 6½" GALV U-BOLT	6	1.43 LBS

REVISIONS				
REV.	ECN	DESCRIPTION	BY	DATE
A		INITIAL RELEASE	ACG	08/30/05
B		UPDATE MT216NSH	ACG	12/07/05
C		UPDATE RINGMOUNT AND WEIGHTS	MSM	01/21/13
D	8000007579	NEW RINGMOUNT WELDMENT DESIGN	RJC	04/16/15


PART LIST FOR USE WITH T-FRAME MC-K10L-B

T-FRAME #	PIPE #	DESCRIPTION	QTY	T-FRAME WEIGHT
MC-K10L-B	-	-	0	723.7 LBS
MC-K10L-6-72	MT-651	2-3/8" O.D. X 72" GALV PIPE	6	923.0 LBS
MC-K10L-6-96	MT-651-96	2-3/8" O.D. X 96" GALV PIPE	6	966.6 LBS
MC-K10L-9-72	MT-651	2-3/8" O.D. X 72" GALV PIPE	9	1022.7 LBS
MC-K10L-9-96	MT-651-96	2-3/8" O.D. X 96" GALV PIPE	9	1088.1 LBS
MC-K10L-12-72	MT-651	2-3/8" O.D. X 72" GALV PIPE	12	1122.3 LBS
MC-K10L-12-96	MT-651-96	2-3/8" O.D. X 96" GALV PIPE	12	1209.6 LBS



NOTES:

1. ALL METRIC DIMENSIONS ARE IN BRACKETS.
2. FITS MONOPOLES 30"-60" OD.

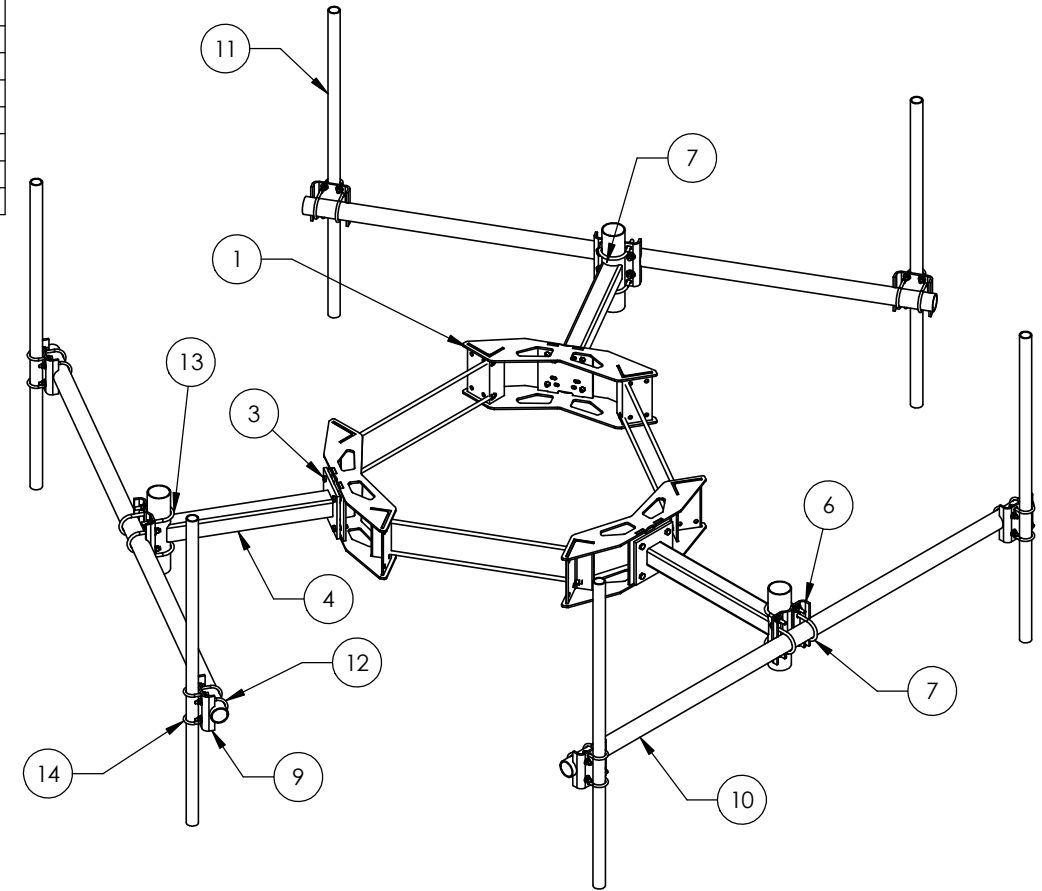
<small>These drawings and specifications are the proprietary property of ANDREW CORPORATION and may be used only for the specific purpose authorized in writing by Andrew Corporation.</small>		DRAWN BY: ACG CHECKED BY: TP DATE: 08/30/05 REVISION: D	SHEET: 1 of 4 SCALE: NTS MATERIAL: A36, A500, A53 FINISH: GALV A123 WEIGHT: SEE TABLE	PART NUMBER: MC-K10L-B SERIES DESCRIPTION: 30" - 60" MONOPOLE 10'6" T-FRAME DRAWING TYPE: ASSEMBLY DRAWING  ORLAND PARK, IL. 60462 U.S.A.
--	--	--	---	---


DO NOT SCALE THIS PRINT

ITEM	PART NO.	DESCRIPTION	QTY.	WEIGHT
1	MC-RM3060-3	Monopole Ringmount 30"-60"	1	262.40 LBS
2	MT197H	HARDWARE KIT (NEXT ITEM)	3	
3	GB-0524A	5/8" X 2-1/2" GALV. BOLT KIT (A325)	12	0.32 LBS
4	MT197.01	36" SINGLE SUPPORT ARM	3	62.84 LBS
5	MT216NSH	HARDWARE KIT (ITEMS 6-8)	3	
6	MT216.13	CENTER BRACKET	3	11.80 LBS
7	GUB-53560	5/8" X 3-5/8" X 6" GALV U-BOLT	6	1.30 LBS
8	MT-219-H	HARDWARE KIT (Next 3 Items)	6	
9	MT21701	PIPE MOUNT PLATE	6	7.93 LBS
10	MT-547-126	Ø 3.5" O.D. X 126 PIPE	3	81.21 LBS
11	MT-XXXX	2-3/8" O.D. PIPE (SEE TABLE)	6	-
12	GUB-4356	1/2" X 3-5/8" X 6" GALV U-BOLT	12	0.82 LBS
13	GUB-5456	5/8" X 4-5/8" X 6 1/2" GALV U-BOLT	6	1.43 LBS
14	GUB-4240	1/2" X 2-1/2" X 4" GALV U-BOLT	12	0.56 LBS

PART LIST FOR USE WITH T-FRAME MC-K10L-6 SERIES

T-FRAME #	PIPE #	DESCRIPTION	QTY	T-FRAME WEIGHT
MC-K10L-B	-	-	0	723.7 LBS
MC-K10L-6-72	MT-651	2-3/8" O.D. X 72" GALV PIPE	6	923.0 LBS
MC-K10L-6-96	MT-651-96	2-3/8" O.D. X 96" GALV PIPE	6	966.6 LBS
MC-K10L-9-72	MT-651	2-3/8" O.D. X 72" GALV PIPE	9	1022.7 LBS
MC-K10L-9-96	MT-651-96	2-3/8" O.D. X 96" GALV PIPE	9	1088.1 LBS
MC-K10L-12-72	MT-651	2-3/8" O.D. X 72" GALV PIPE	12	1122.3 LBS
MC-K10L-12-96	MT-651-96	2-3/8" O.D. X 96" GALV PIPE	12	1209.6 LBS



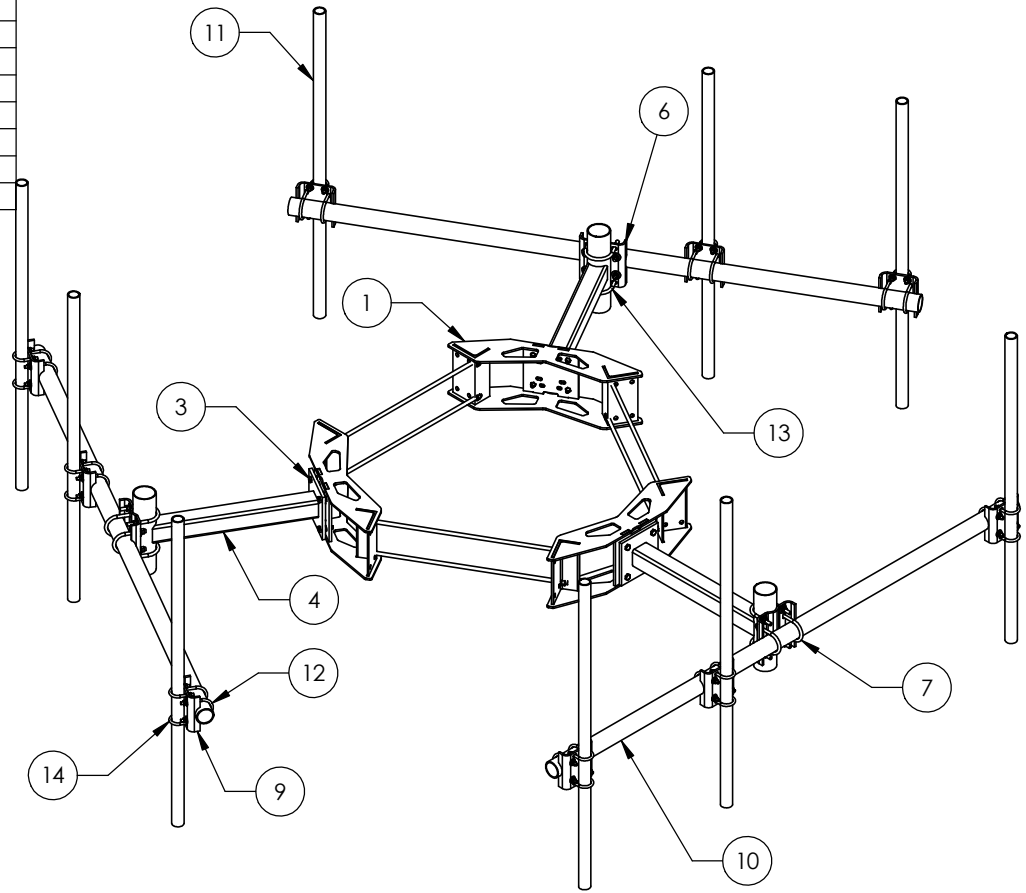
<small>These drawings and specifications are the proprietary property of ANDREW CORPORATION and may be used only for the specific purpose authorized in writing by Andrew Corporation.</small>		DRAWN BY: ACG CHECKED BY: TP DATE: 08/30/05 REVISION: D	SHEET: 2 of 4 SCALE: NTS MATERIAL: A36, A500, A53 FINISH: GALV A123 WEIGHT: SEE TABLE	PART NUMBER: MC-K10L-6 SERIES DESCRIPTION: 30" - 60" MONOPOLE 10'6" T-FRAME DRAWING TYPE: ASSEMBLY DRAWING  ORLAND PARK, IL. 60462 U.S.A.
--	--	--	---	---

ALL DIMENSIONS ARE IN INCHES U.O.S.  
 TOLERANCES UNLESS OTHERWISE SPECIFIED:  
 .X = .06 ANGLES 2'  
 .XX = .03 FRACTIONS 1/32  
 .XXX = .010  
 REMOVE BURRS AND BREAK EDGES .005  
 DO NOT SCALE THIS PRINT


ITEM	PART NO.	DESCRIPTION	QTY.	WEIGHT
1	MC-RM3060-3	Monopole Ringmount 30"-60"	1	262.40 LBS
2	MT197H	HARDWARE KIT (NEXT ITEM)	3	
3	GB-0524A	5/8" X 2-1/2" GALV. BOLT KIT (A325)	12	0.32 LBS
4	MT197.01	36" SINGLE SUPPORT ARM	3	62.84 LBS
5	MT216NSH	HARDWARE KIT (ITEMS 6-8)	3	
6	MT216.13	CENTER BRACKET	3	11.80 LBS
7	GUB-53560	5/8" X 3-5/8" X 6" GALV U-BOLT	6	1.30 LBS
8	MT-219-H	HARDWARE KIT (Next 3 Items)	9	
9	MT21701	PIPE MOUNT PLATE	9	7.93 LBS
10	MT-547-126	Ø 3.5" O.D. X 126 PIPE	3	81.21 LBS
11	MT-XXXX	2-3/8" O.D. PIPE (SEE TABLE)	9	-
12	GUB-4356	1/2" X 3-5/8" X 6" GALV U-BOLT	18	0.82 LBS
13	GUB-5456	5/8" X 4-5/8" X 6 1/2" GALV U-BOLT	6	1.43 LBS
14	GUB-4240	1/2" X 2-1/2" X 4" GALV U-BOLT	18	0.56 LBS

PART LIST FOR USE WITH T-FRAME MC-K10L-9 SERIES

T-FRAME #	PIPE #	DESCRIPTION	QTY	T-FRAME WEIGHT
MC-K10L-B	-	-	0	723.7 LBS
MC-K10L-6-72	MT-651	2-3/8" O.D. X 72" GALV PIPE	6	923.0 LBS
MC-K10L-6-96	MT-651-96	2-3/8" O.D. X 96" GALV PIPE	6	966.6 LBS
MC-K10L-9-72	MT-651	2-3/8" O.D. X 72" GALV PIPE	9	1022.7 LBS
MC-K10L-9-96	MT-651-96	2-3/8" O.D. X 96" GALV PIPE	9	1088.1 LBS
MC-K10L-12-72	MT-651	2-3/8" O.D. X 72" GALV PIPE	12	1122.3 LBS
MC-K10L-12-96	MT-651-96	2-3/8" O.D. X 96" GALV PIPE	12	1209.6 LBS



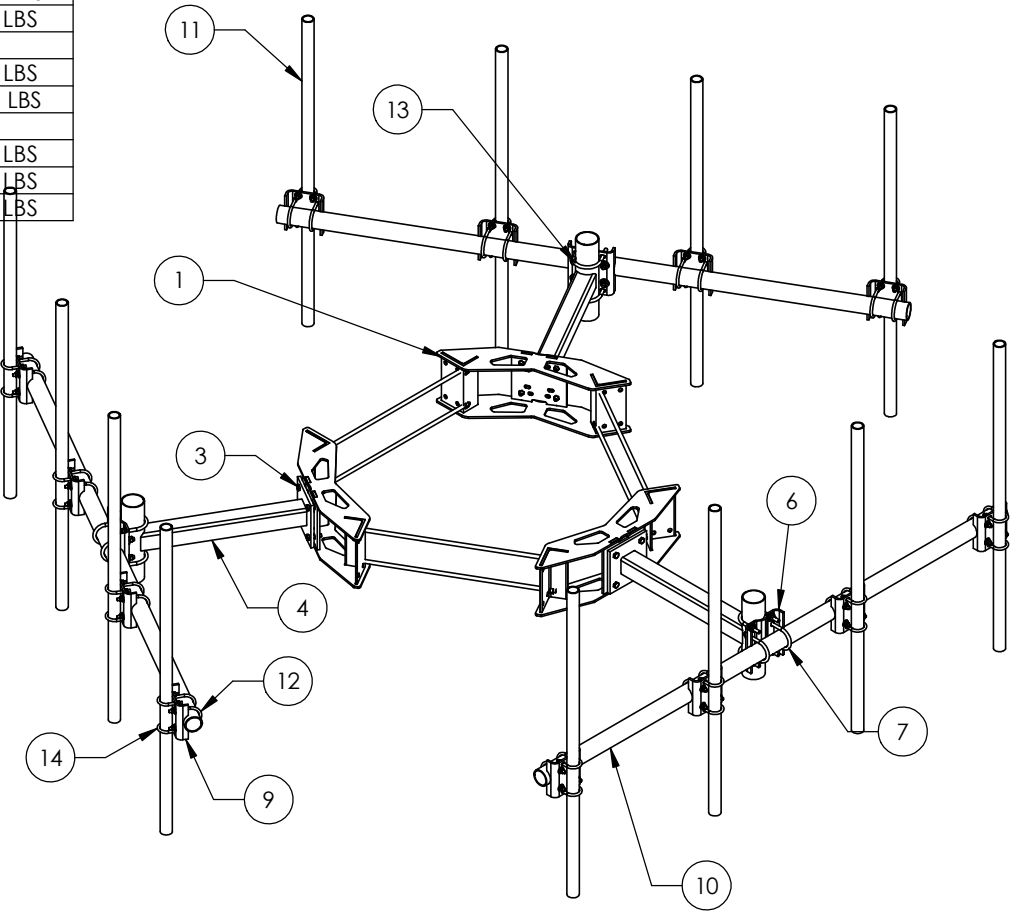
These drawings and specifications are the proprietary property of ANDREW CORPORATION and may be used only for the specific purpose authorized in writing by Andrew Corporation.

Drawn by: ACG	Sheet: 3 of 4	Part Number: MC-K10L-9 SERIES
Checked by: TP	Scale: NTS	Description: 30" - 60" MONOPOLE 10'6" T-FRAME
Date: 08/30/05	Material: A36, A500, A53	Drawing Type: ASSEMBLY DRAWING
Revision: D	Finish: GALV A123	 <b>ANDREW</b> ORLAND PARK, IL. 60462 U.S.A.
REMOVE BURRS AND BREAK EDGES .005		
DO NOT SCALE THIS PRINT		Weight: SEE TABLE

ITEM	PART NO.	DESCRIPTION	QTY.	WEIGHT
1	MC-RM3060-3	Monopole Ringmount 30"-60"	1	262.40 LBS
2	MT197H	HARDWARE KIT (NEXT ITEM)	3	
3	GB-0524A	5/8" X 2-1/2" GALV. BOLT KIT (A325)	12	0.32 LBS
4	MT197.01	36" SINGLE SUPPORT ARM	3	62.84 LBS
5	MT216NSH	HARDWARE KIT (ITEMS 6-8)	3	
6	MT216.13	CENTER BRACKET	3	11.80 LBS
7	GUB-53560	5/8" X 3-5/8" X 6" GALV U-BOLT	6	1.30 LBS
8	MT-219-H	HARDWARE KIT (Next 3 Items)	12	
9	MT21701	PIPE MOUNT PLATE	12	7.93 LBS
10	MT-547-126	Ø 3.5" O.D. X 126 PIPE	3	81.21 LBS
11	MT-XXXX	2-3/8" O.D. PIPE (SEE TABLE)	12	-
12	GUB-4356	1/2" X 3-5/8" X 6" GALV U-BOLT	24	0.82 LBS
13	GUB-5456	5/8" X 4-5/8" X 6 1/2" GALV U-BOLT	6	1.43 LBS
14	GUB-4240	1/2" X 2-1/2" X 4" GALV U-BOLT	24	0.56 LBS

PART LIST FOR USE WITH T-FRAME MC-K10L-12 SERIES

T-FRAME #	PIPE #	DESCRIPTION	QTY	T-FRAME WEIGHT
MC-K10L-B	-	-	0	723.7 LBS
MC-K10L-6-72	MT-651	2-3/8" O.D. X 72" GALV PIPE	6	923.0 LBS
MC-K10L-6-96	MT-651-96	2-3/8" O.D. X 96" GALV PIPE	6	966.6 LBS
MC-K10L-9-72	MT-651	2-3/8" O.D. X 72" GALV PIPE	9	1022.7 LBS
MC-K10L-9-96	MT-651-96	2-3/8" O.D. X 96" GALV PIPE	9	1088.1 LBS
MC-K10L-12-72	MT-651	2-3/8" O.D. X 72" GALV PIPE	12	1122.3 LBS
MC-K10L-12-96	MT-651-96	2-3/8" O.D. X 96" GALV PIPE	12	1209.6 LBS



<small>These drawings and specifications are the proprietary property of ANDREW CORPORATION and may be used only for the specific purposes authorized in writing by Andrew Corporation.</small>		DRAWN BY: ACG CHECKED BY: TP DATE: 08/30/05 REVISION: D	SHEET: 4 of 4 SCALE: NTS MATERIAL: A36, A500, A53 PART NUMBER: MC-K10L-12 SERIES DESCRIPTION: 30" - 60" MONOPOLE 10'6" T-FRAME DRAWING TYPE: ASSEMBLY DRAWING PART: GALV A123 REFER: SEE TABLE	ORLAND PARK, IL. 60462 U.S.A. 
<small>ALL DIMENSIONS ARE IN INCHES U.O.S. TOLERANCES UNLESS OTHERWISE SPECIFIED:          .X = .06 ANGLES FRACTIONS 2 1/32          .XX = .03          .XXX = .010          REMOVE BURRS AND BREAK EDGES .005          DO NOT SCALE THIS PRINT</small>				