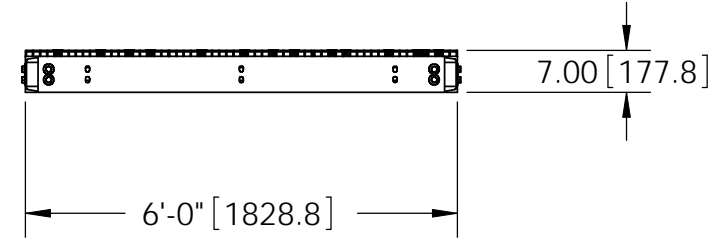
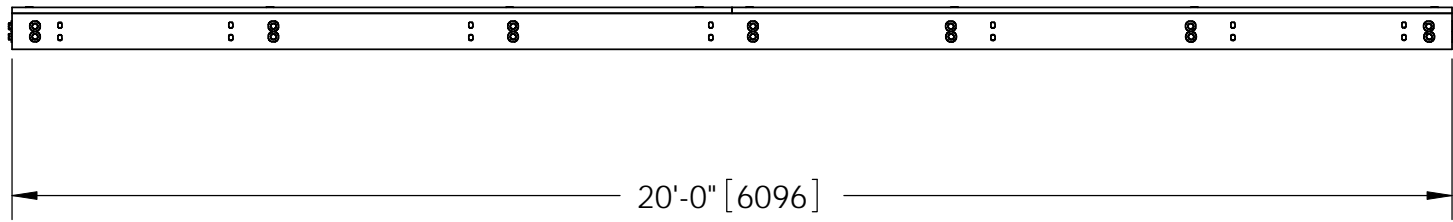
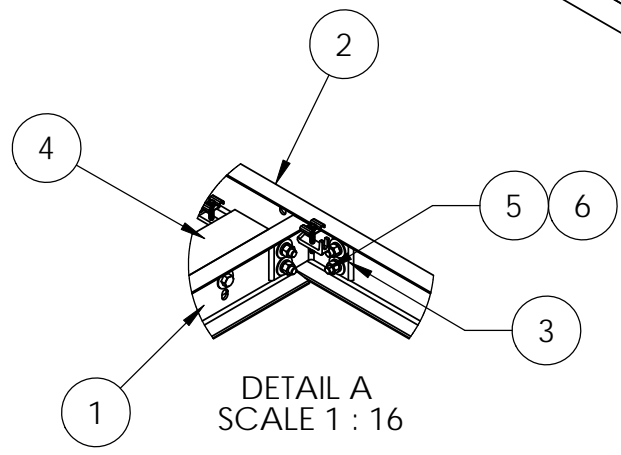
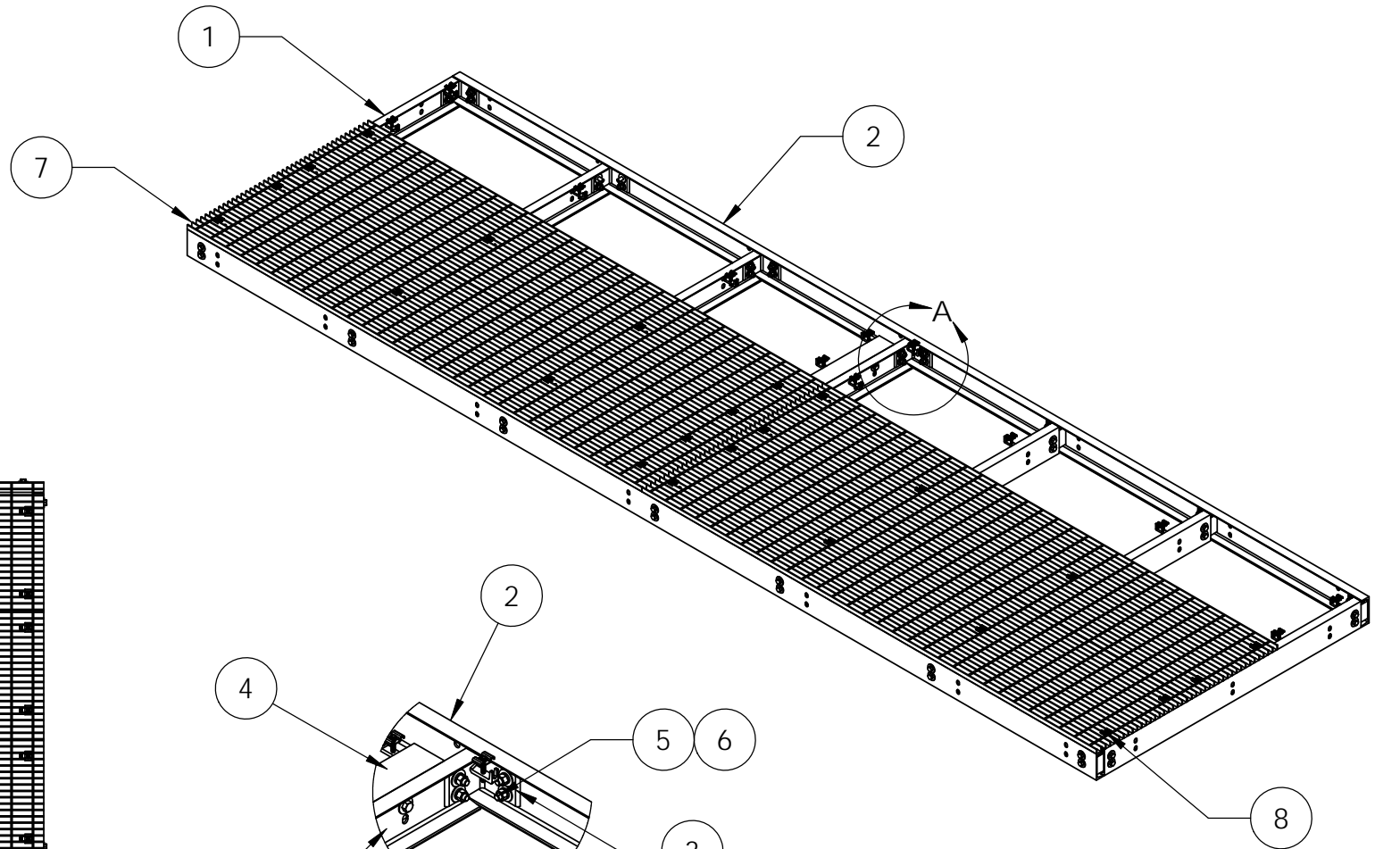
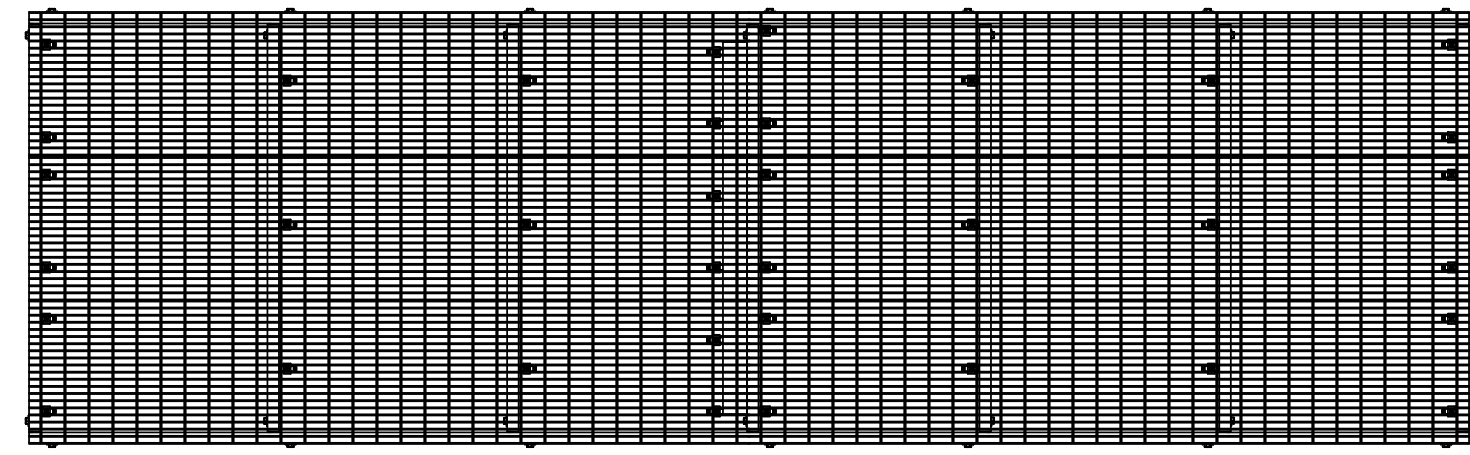



ITEM	PART NO.	DESCRIPTION	QTY.	WEIGHT
1	MTCPCC06.01	6' Platform Channel Center	7	46.23 LBS
2	EQP6C042001	20' Platform Channel Side	2	163.89 LBS
3	MTCP.01	6" Channel Adapter Angle	14	3.18 LBS
4	EQP062001	Grating Section Bracket 6' Wide Platform	1	33.75 LBS
5	GB-05205	5/8" X 2" GALV BOLT KIT	59	0.27 LBS
6	GWF-05	5/8" GALV FLAT WASHER	118	0.06 LBS
7	MTC9170.09	24" X 120" BAR GRATING	6	141.45 LBS
8	GCM03	GRATING CLIP	36	0.39 LBS

REVISIONS				
REV.	ZONE	DESCRIPTION	BY	DATE
A		INITIAL RELEASE	MSM	01/31/12



NOTES:
 1. ALL METRIC DIMENSIONS ARE IN BRACKETS.
 2. GRATING HIDDEN FOR CLARITY.

<small>These drawings and specifications are the proprietary property of ANDREW CORPORATION and may be used only for the specific purpose authorized in writing by Andrew Corporation.</small> <small>ALL DIMENSIONS ARE IN INCHES U.O.S.</small> <small>TOLERANCES UNLESS OTHERWISE SPECIFIED:</small> .X = ± .12 ANGLES ±2° .XX = ± .06 FRACTIONS ±1/32 .XXX = ± .03 <small>REMOVE BURRS AND BREAK EDGES .005</small> DO NOT SCALE THIS PRINT	<small>DRAWN BY:</small> MSM	<small>SHEET:</small> 1 of 1	<small>PART NUMBER:</small> EQ-P6C0620-B
	<small>CHECKED BY:</small> TP	<small>SCALE:</small> NTS	<small>DESCRIPTION:</small> 6' X 20' Equipment Platform, 6" Channel
	<small>DATE:</small> 01/31/12	<small>MATERIAL:</small> A36, A568	<small>DRAWING TYPE:</small> ASSEMBLY DRAWING
	<small>REVISION:</small> A	<small>FINISH:</small> GALV A123 <small>WEIGHT:</small> 1621.12 LBS	 WESTCHESTER, IL. 60154 U.S.A.