

RVVPX306.11R-V2



6-port sector antenna, 2x 698–960 and 4x 1710–2690 MHz, 65° HPBW, 3x RET with manual override.

- Integrated Internal Remote Electrical Tilt (RET), with independent control of electrical tilt with manual override on all arrays
- All Internal RET actuators are connected in “Cascaded SRET” configuration
- Uses the 4.3-10 connector which is 40 percent smaller than the 7-16 DIN connector

This product will be discontinued on: November 30, 2024

Replaced By:

RVV-65A-R3

6-port sector antenna, 2x 694–960 and 4x 1695–2690 MHz, 65° HPBW, 3x RET

General Specifications

Antenna Type	Sector
Band	Multiband
Grounding Type	RF connector inner conductor and body grounded to reflector and mounting bracket
Performance Note	Outdoor usage
Radome Material	ASA, UV stabilized
Radiator Material	Brass Low loss circuit board
Reflector Material	Aluminum
RF Connector Interface	4.3-10 Female
RF Connector Location	Bottom
RF Connector Quantity, high band	4
RF Connector Quantity, low band	2
RF Connector Quantity, total	6

Remote Electrical Tilt (RET) Information

RET Interface	8-pin DIN Female 8-pin DIN Male
RET Interface, quantity	1 female 1 male
Input Voltage	10–30 Vdc
Internal RET	High band (2) Low band (1)
Power Consumption, idle state, maximum	2 W

RVVPX306.11R-V2

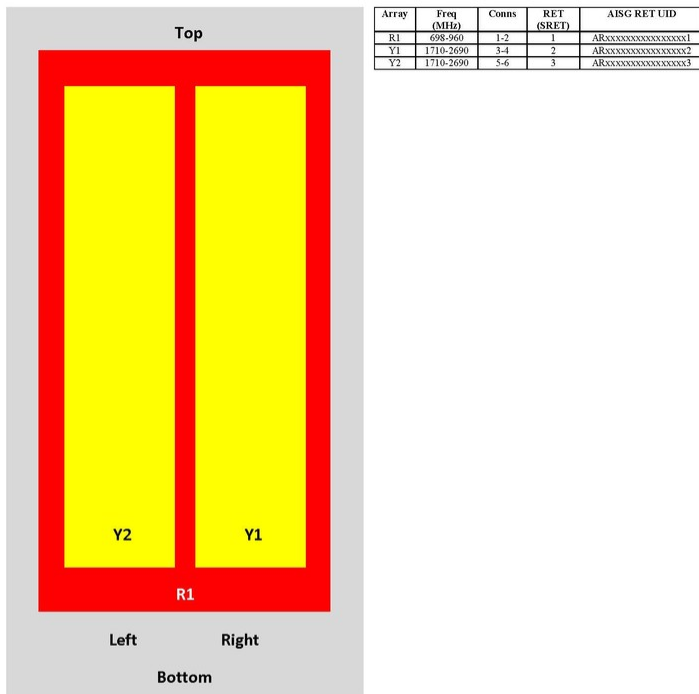
Power Consumption, normal conditions, maximum	13 W
Protocol	3GPP/AISG 2.0 (Single RET)

Dimensions

Width	353 mm 13.898 in
Depth	209 mm 8.228 in
Length	1600 mm 62.992 in
Net Weight, without mounting kit	23 kg 50.706 lb

Array Layout

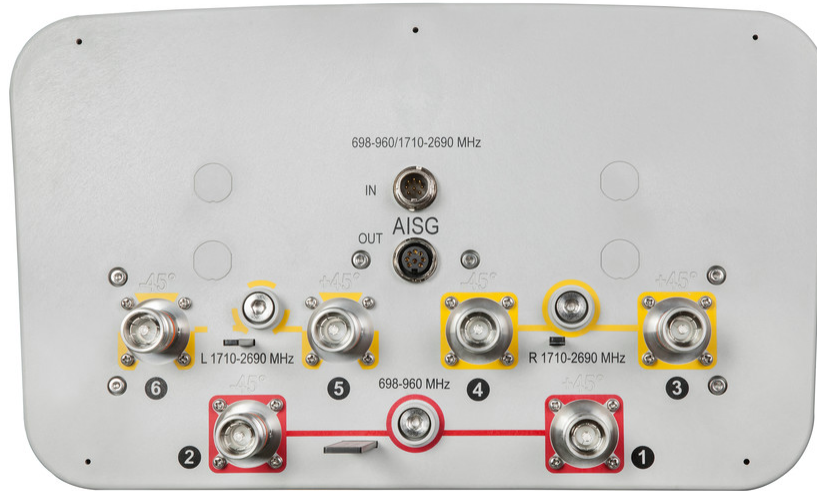
RVVPX



View from the front of the antenna
(Sizes of colored boxes are not true depictions of array sizes)

Port Configuration

RVVPX306.11R-V2



Electrical Specifications

Impedance	50 ohm
Operating Frequency Band	1710 – 2690 MHz 698 – 960 MHz
Polarization	±45°

Electrical Specifications

Frequency Band, MHz	698–790	790–890	890–960	1710–1920	1920–2170	2300–2690
Gain, dBi	14.1	14.8	14.9	17.2	17.6	18.2
Beamwidth, Horizontal, degrees	68.2	68.7	63	62	63.1	61.4
Beamwidth, Vertical, degrees	16.4	14.7	13.4	7.5	6.7	5.4
Beam Tilt, degrees	0–10	0–10	0–10	0–10	0–10	0–10
USLS (First Lobe), dB	18	18	18	18	18	18
Null Fill, dB				-22	-22	-22
Front-to-Back Ratio at 180°, dB	25	24	25	29	32	30
CPR at Boresight, dB	15.9	12	13.4	20	17	15
CPR at Sector, dB	10	10	7	7	5.4	3
Isolation, Cross Polarization, dB	25	25	25	25	25	25

RVVPX306.11R-V2

Isolation, Inter-band, dB	30	30	30	30	30	30
VSWR Return loss, dB	1.43 15.0	1.43 15.0	1.43 15.0	1.5 14.0	1.5 14.0	1.5 14.0
PIM, 3rd Order, 2 x 20 W, dBc	-150	-150	-150	-150	-150	-150
Input Power per Port, maximum, watts	300	300	300	250	250	250

Electrical Specifications, BASTA

Frequency Band, MHz	698–790	790–890	890–960	1710–1920	1920–2170	2300–2690
Gain by all Beam Tilts, average, dBi	13.9	14.2	14.8	16.8	17.3	17.7
Gain by all Beam Tilts Tolerance, dB	±0.2	±0.2	±0.1	±0.6	±0.3	±0.6
Gain by Beam Tilt, average, dBi	0° 13.9 5° 13.9 10° 13.9	0° 14.2 5° 14.2 10° 14.1	0° 14.8 5° 14.8 10° 14.7	0° 16.8 5° 16.8 10° 16.8	0° 17.2 5° 17.2 10° 17.3	0° 17.8 5° 17.8 10° 17.5
Beamwidth, Horizontal Tolerance, degrees	±1.6	±1.8	±2	±2.8	±5.1	±6.3
Beamwidth, Vertical Tolerance, degrees	±0.8	±0.9	±0.5	±0.5	±0.5	±0.4
USLS, beampeak to 20° above beampeak, dB	18	18	18	18	18	18
Front-to-Back Total Power at 180° ± 30°, dB	24.5	22.7	23.7	22.9	24.8	25
CPR at Boresight, dB	16	13	13	21	19	18
CPR at Sector, dB	11	10	8	7	5	5

Mechanical Specifications

Wind Loading @ Velocity, frontal	748.0 N @ 150 km/h (168.2 lbf @ 150 km/h)
Wind Loading @ Velocity, rear	634.0 N @ 150 km/h (142.5 lbf @ 150 km/h)
Wind Speed, maximum	250 km/h (155 mph)

Packaging and Weights

Width, packed	427 mm 16.811 in
Depth, packed	325 mm 12.795 in
Length, packed	1787 mm 70.354 in
Weight, gross	40 kg 88.185 lb

Regulatory Compliance/Certifications

Agency	Classification
---------------	-----------------------

RVVPX306.11R-V2

CE Compliant with the relevant CE product directives
ISO 9001:2015 Designed, manufactured and/or distributed under this quality management system



Included Products

T-041-GL-E – Adjustable Tilt Pipe Mounting Kit for 2.0"-4.5" (60-115mm) OD round members for panel antennas. Includes 2 clamp sets.

* Footnotes

Performance Note Severe environmental conditions may degrade optimum performance