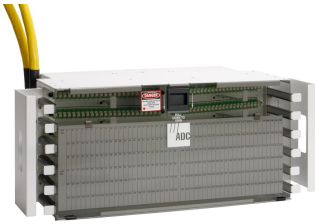


# FCM-67/OPG046

---



FDF Fiber Termination Panel, 144 SC/UPC, singlemode, 8 in x 23 in, putty white, pre-terminated with Indoor/Outdoor cable, 46 meters, stub tail at far end

## Product Classification

<b>Regional Availability</b>	Latin America   North America
<b>Portfolio</b>	CommScope®
<b>Product Type</b>	Fiber patch panel, with indoor/outdoor cable
<b>Product Series</b>	FDF

## General Specifications

<b>Functionality</b>	Patching
<b>Application</b>	Used in rear-load FDF-style frames only
<b>Body Style</b>	Symmetrical
<b>Cable Exit Location</b>	Upward
<b>Cable Stub Type</b>	Indoor/outdoor, stranded
<b>Color</b>	Putty white
<b>Color, front</b>	Putty white
<b>Growth Configuration</b>	Fully loaded
<b>Interface, front</b>	SC/UPC
<b>Interface, rear</b>	Stub tail
<b>Patch Cord Entry Location</b>	Front, left side   Front, right side
<b>Rack Type</b>	EIA 23 in
<b>Rack Units</b>	4.57
<b>Shelf Movement</b>	Fixed
<b>Total Ports, quantity</b>	144

## Dimensions

<b>Height</b>	203.2 mm   8 in
<b>Width</b>	584.2 mm   23 in
<b>Depth</b>	304.8 mm   12 in

# FCM-67/OPG046

---

**Cable Length** 46 m | 150.919 ft

## Material Specifications

**Finish** Powder coated

**Material Type** Steel

## Optical Specifications

**Fiber Mode** Singlemode

## Environmental Specifications

**Operating Temperature** -40 °C to +70 °C (-40 °F to +158 °F)

## Packaging and Weights

**Packaging quantity** 1

## Regulatory Compliance/Certifications

Agency	Classification
CHINA-ROHS	Above maximum concentration value
REACH-SVHC	Compliant as per SVHC revision on <a href="http://www.commscope.com/ProductCompliance">www.commscope.com/ProductCompliance</a>
ROHS	Compliant/Exempted
UK-ROHS	Compliant/Exempted

