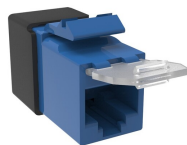


# 760241200 | SL10G-DC-BL



## SL-Series Modular Jack, RJ45, Cat6A Unshielded, with Dust Cover, Blue

- Color is more prominently visible across the body of the jack
- Allows for all jack variants to be terminated with the SL termination tool
- Lacing fixture of the SL termination tool is used to establish the cable termination

### OBSOLETE

This product was discontinued on: September 30, 2024

#### Replaced By:

760257219  
SL10G-DC-BL

SL-Series Modular Jack, RJ45, Cat6A Unshielded, with Dust Cover, Blue

## Product Classification

<b>Regional Availability</b>	Asia   Australia/New Zealand   EMEA   Latin America
<b>Portfolio</b>	NETCONNECT®
<b>Product Type</b>	Modular jack
<b>Product Series</b>	SL Series

## General Specifications

<b>ANSI/TIA Category</b>	6A
<b>Cable Type</b>	Unshielded
<b>Color</b>	Blue
<b>Conductor Type</b>	Solid   Stranded
<b>Integrated Dust Cover Type</b>	Hinged
<b>Mounting</b>	SL Series faceplates and panels
<b>Outlet Type</b>	Standard
<b>Termination Punchdowns, minimum</b>	5 times
<b>Termination Tool</b>	SL Termination tool
<b>Termination Type</b>	IDC
<b>Transmission Standards</b>	ANSI/TIA-568.2-D   ISO/IEC 11801 Class EA
<b>Wiring</b>	T568A   T568B

## Dimensions

# 760241200 | SL10G-DC-BL

---

<b>Panel Cutout, recommended</b>	14.78 x 20.07 mm (0.58 x 0.79 in)
<b>Panel Thickness, recommended</b>	1.6 mm   0.063 in
<b>Height</b>	16.13 mm   0.635 in
<b>Width</b>	14.48 mm   0.57 in
<b>Depth</b>	30.48 mm   1.2 in
<b>Compatible Cable Diameter, maximum</b>	7.24 mm   0.285 in
<b>Compatible Insulated Conductor Diameter, maximum</b>	1.45 mm   0.057 in
<b>Contact Plating Thickness</b>	1.27 µm
<b>Compatible Conductor Gauge, solid</b>	22 AWG   24 AWG
<b>Compatible Conductor Gauge, stranded</b>	24 AWG   26 AWG

## Electrical Specifications

<b>Remote Powering</b>	Fully supports the safe delivery of power over LAN cabling described by IEEE 802.3bt (Type 4) and complies with the unmating under electrical load requirements prescribed by IEC 60512-99-002
<b>PoE Durability</b>	Supports IEEE 802.3bt Type 4 (90 W) applications greater than 3000 plug to jack mating cycles

## Material Specifications

<b>Contact Base Material</b>	Beryllium copper
<b>Contact Plating Material</b>	Gold
<b>IDC Termination Material</b>	Phosphor Bronze
<b>Material Type</b>	Copper alloy   High-impact, flame retardant, thermoplastic   Polycarbonate

## Mechanical Specifications

<b>Plug to Jack Mating Cycles</b>	Complies to IEC 60603-7 series
-----------------------------------	--------------------------------

## Environmental Specifications

<b>Operating Temperature</b>	-10 °C to +60 °C (+14 °F to +140 °F)
<b>Storage Temperature</b>	-40 °C to +70 °C (-40 °F to +158 °F)
<b>Flammability Rating</b>	UL 94 V-0

## Packaging and Weights

<b>Packaging quantity</b>	1
---------------------------	---

**Packaging Type**

Bag

Regulatory Compliance/Certifications

<b>Agency</b>	<b>Classification</b>
CHINA-ROHS	Below maximum concentration value
ISO 9001:2015	Designed, manufactured and/or distributed under this quality management system
REACH-SVHC	Compliant as per SVHC revision on <a href="http://www.commscope.com/ProductCompliance">www.commscope.com/ProductCompliance</a>
ROHS	Compliant
UK-ROHS	Compliant

