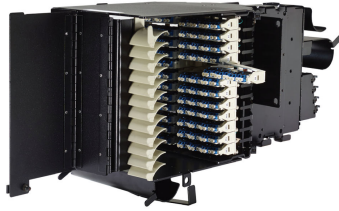


NGFB-MPSL0K612



Next Generation Frame (NGF) Fiber Termination Block, 288 LC/UPC, SingleMode, MPO at rear end, left oriented, black

Product Classification

Regional Availability	EMEA Latin America North America
Product Type	Fiber patch block
Product Series	NGFB

General Specifications

Functionality	Patching
Application	Used in NGF-style frames only
Body Style	Left orientation
Color	Black
Color, front	Black
Door Type, front	Compression latch Hinged
Growth Configuration	Fully loaded
Interface, front	LC/UPC
Interface, rear	MPO
Rack Type	NGF
Shelf Movement	Fixed
Total Ports, quantity	288

Material Specifications

Finish	Powder coated
Material Type	Steel

Optical Specifications

Fiber Mode	Singlemode
-------------------	------------

NGFB-MPSL0K612

Environmental Specifications

Operating Temperature	-5 °C to +50 °C (+23 °F to +122 °F)
Storage Temperature	-40 °C to +70 °C (-40 °F to +158 °F)
Relative Humidity	Up to 80%, non-condensing
Qualification Standards	Telcordia GR-449-CORE

Packaging and Weights

Packaging quantity	1
---------------------------	---

Regulatory Compliance/Certifications

Agency	Classification
CHINA-ROHS	Above maximum concentration value
REACH-SVHC	Compliant as per SVHC revision on www.commscope.com/ProductCompliance
ROHS	Compliant/Exempted
UK-ROHS	Compliant/Exempted

