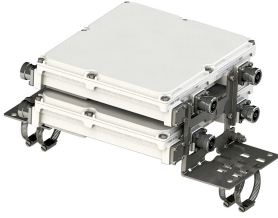


E11F01P68



Twin Diplexer, 800/900 AISG compatible, dc pass on all ports

- dc/AISG pass-through on all frequency ports
- Industry leading PIM performance
- Twin configuration
- Designed for network Modernization, introduction of LTE800 on existing site

OBSOLETE

This product was discontinued on: July 1, 2022

Replaced By:

E11F02P72

Twin Diplexer, 700-800/900 MHz, dc pass on all ports

Product Classification

Product Type Diplexer

General Specifications

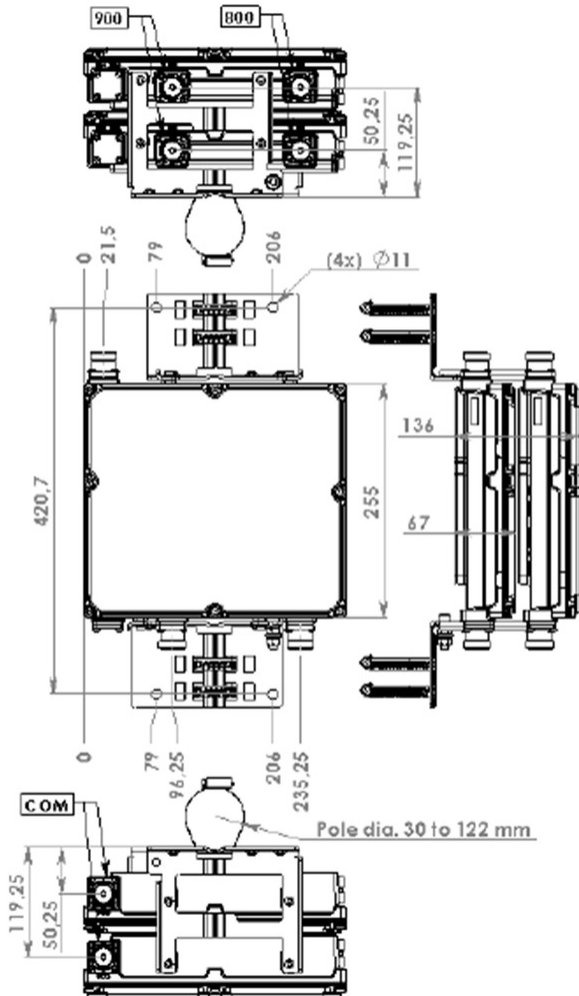
Product Family CBC89
Color Gray
Modularity 2-Twin
Mounting Pole | Wall
Mounting Pipe Hardware Band clamps (2)
RF Connector Interface 7-16 DIN Female
RF Connector Interface Body Style Long neck

Dimensions

Height 255 mm | 10.039 in
Width 285 mm | 11.22 in
Depth 136 mm | 5.354 in
Mounting Pipe Diameter Range 42.6–122 mm

E11F01P68

Outline Drawing



Electrical Specifications

Impedance	50 ohm
License Band, Band Pass	CEL 900 EDD 800 LMR 750

Electrical Specifications, Common Port

Composite Power, PEP	340 W
-----------------------------	-------

Electrical Specifications, dc Power/Alarm

dc/AISG Pass-through, combiner	Branch 1 Branch 2
dc/AISG Pass-through, demultiplexer	Branch 1 Branch 2
Lightning Surge Current	3 kA

E11F01P68

Lightning Surge Current Waveform

10/350 waveform

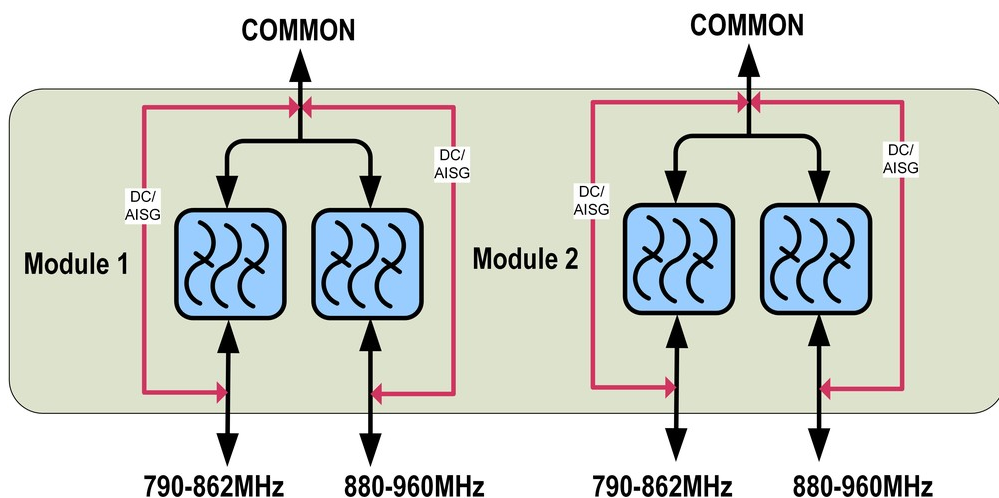
Electrical Specifications

Sub-module	1 2	1 2
Branch	1	2
Port Designation	800	900
License Band	EDD 800, Band Pass	CEL 900, Band Pass

Electrical Specifications, Band Pass

Frequency Range, MHz	790–862	880–960
Insertion Loss, maximum, dB	0.4	0.4
Return Loss, minimum, dB	21	21
Isolation, minimum, dB	50	50
3rd Order PIM, maximum, dBc	-160	-160
3rd Order PIM Test Method	Two +43 dBm carriers	Two +43 dBm carriers

Block Diagram



Environmental Specifications

Operating Temperature	-40 °C to +65 °C (-40 °F to +149 °F)
Corrosion Test Method	IEC 60068-2-11, 30 days
Ingress Protection Test Method	IEC 60529:2001, IP68

E11F01P68

Packaging and Weights

Included	Mounting hardware
Weight, net	13 kg 28.66 lb

Regulatory Compliance/Certifications

Agency	Classification
ISO 9001:2015	Designed, manufactured and/or distributed under this quality management system

