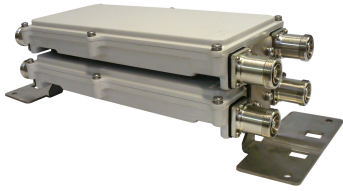


E11F01P18



Twin Diplexer, DCS 1800/UMTS/WiMAX/LTE

OBSOLETE

This product was discontinued on: July 1, 2022

Replaced By:

E11F02P49

Twin Diplexer, 1695-2180/2300-2690 MHz, dc bypass all ports

Product Classification

Product Type Diplexer

General Specifications

Product Family	CBC1726old
Color	Gray
Common Port Label	PORT 3 COMMON
Modularity	2-Twin
Mounting	Pole Wall
Mounting Pipe Hardware	Band clamps (2)
RF Connector Interface	7-16 DIN Female
RF Connector Interface Body Style	Long neck

Dimensions

Height	300 mm 11.811 in
Width	136 mm 5.354 in
Depth	96.2 mm 3.787 in
Ground Screw Diameter	6 mm 0.236 in
Mounting Pipe Diameter Range	40–160 mm

Outline Drawing

E11F01P18

License Band

AWS 1700, Band Pass
DCS 1800, Band Pass
IMT 2100, Band Pass
PCS 1900, Band Pass

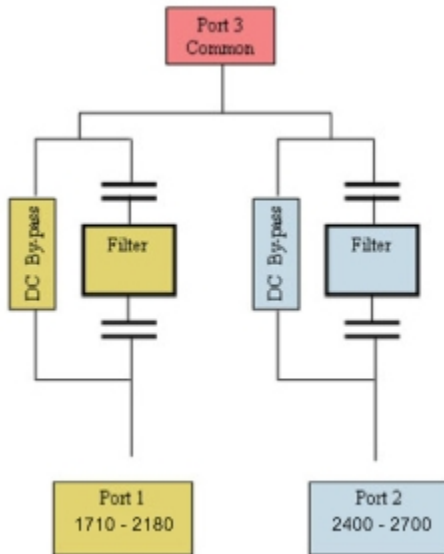
IMT 2600, Band Pass

Electrical Specifications, Band Pass

Frequency Range, MHz	1710–2180	2400–2700
Insertion Loss, typical, dB	0.25	0.3
Return Loss, minimum, dB	19	19
Isolation, minimum, dB	50	50
3rd Order PIM, typical, dBc	-160	-160
3rd Order PIM Test Method	Two +43 dBm carriers	Two +43 dBm carriers

E11F01P18

Block Diagram



Environmental Specifications

Operating Temperature	-40 °C to +60 °C (-40 °F to +140 °F)
Relative Humidity	Up to 100%
Corrosion Test Method	IEC 60068-2-11, 30 days
Ingress Protection Test Method	IEC 60529:2001, IP67

Packaging and Weights

Included	Mounting hardware
Volume	3.8 L
Weight, net	9 kg 19.842 lb