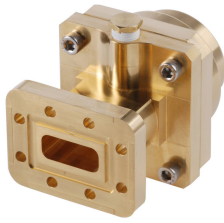


190SE



Fixed-tuned CPR90G for elliptical waveguide 90

Product Classification

Product Type Elliptical waveguide connector

General Specifications

Attachment Method Tab-flare | Tool-flare
Body Style Straight, fixed-tuned
Inner Contact Plating Unplated
Interface CPR90G
Outer Contact Plating Unplated
Pressurizable Yes

Dimensions

Width 72.39 mm | 2.85 in
Length 80.772 mm | 3.18 in
Transition Length 46.228 mm | 1.82 in
Waveguide Size WR90 | WG16 | R100

Electrical Specifications

Insertion Loss, typical 0.01 dB
Operating Frequency Band 10.2 – 11.7 GHz
Peak Power at Frequency, maximum 44.90 kW @ 11.20 GHz

Material Specifications

Material Type Brass

Environmental Specifications

Operating Temperature -55 °C to +85 °C (-67 °F to +185 °F)
Storage Temperature -55 °C to +85 °C (-67 °F to +185 °F)

190SE

Packaging and Weights

Weight, net 1 kg | 2.205 lb

Regulatory Compliance/Certifications

Agency	Classification
CHINA-ROHS	Above maximum concentration value
ISO 9001:2015	Designed, manufactured and/or distributed under this quality management system
REACH-SVHC	Compliant as per SVHC revision on www.andrew.com/ProductCompliance
ROHS	Compliant/Exempted
UK-ROHS	Compliant/Exempted



* Footnotes

Insertion Loss, typical 0.05√freq (GHz) (not applicable for elliptical waveguide)