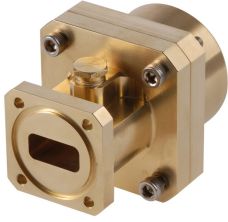


# 1127SC

---



Fixed-tuned WR75 Pressurizable Cover Flange for elliptical waveguide 127

## Product Classification

**Product Type** Elliptical waveguide connector

## General Specifications

**Attachment Method** Tab-flare | Tool-flare  
**Body Style** Straight, fixed-tuned  
**Inner Contact Plating** Unplated  
**Interface** WR75 Cover  
**Outer Contact Plating** Unplated  
**Pressurizable** Yes

## Dimensions

**Width** 57.404 mm | 2.26 in  
**Length** 72.39 mm | 2.85 in  
**Transition Length** 39.37 mm | 1.55 in  
**Waveguide Size** WR75 | WG17 | R120

## Electrical Specifications

**Insertion Loss, typical** 0.01 dB  
**Operating Frequency Band** 11.7 – 13.25 GHz  
**Peak Power at Frequency, maximum** 34.00 kW @ 12.70 GHz

## Material Specifications

**Material Type** Brass

## Environmental Specifications

**Operating Temperature** -55 °C to +85 °C (-67 °F to +185 °F)  
**Storage Temperature** -55 °C to +85 °C (-67 °F to +185 °F)

# 1127SC

---

## Packaging and Weights

**Weight, net** 0.7 kg | 1.543 lb

## Regulatory Compliance/Certifications

<b>Agency</b>	<b>Classification</b>
CHINA-ROHS	Below maximum concentration value
ISO 9001:2015	Designed, manufactured and/or distributed under this quality management system
REACH-SVHC	Compliant as per SVHC revision on <a href="http://www.andrew.com/ProductCompliance">www.andrew.com/ProductCompliance</a>
ROHS	Compliant
UK-ROHS	Compliant



## \* Footnotes

**Insertion Loss, typical** 0.05√freq (GHz) (not applicable for elliptical waveguide)