

# VV-65A-R2



4-port sector antenna, 4x 1695–2690 MHz, 65° HPBW, 2x RET with manual override and tilt scales.

- Uses the 4.3-10 connector which is 40 percent smaller than the 7-16 DIN connector

## General Specifications

<b>Antenna Type</b>	Sector
<b>Band</b>	Single band
<b>Color</b>	Light Gray (RAL 7035)
<b>Grounding Type</b>	RF connector inner conductor and body grounded to reflector and mounting bracket
<b>Performance Note</b>	Outdoor usage
<b>Radome Material</b>	Fiberglass, UV resistant
<b>RF Connector Interface</b>	4.3-10 Female
<b>RF Connector Location</b>	Bottom
<b>RF Connector Quantity, high band</b>	4
<b>RF Connector Quantity, total</b>	4

## Remote Electrical Tilt (RET) Information

<b>RET Interface</b>	8-pin DIN Female   8-pin DIN Male
<b>RET Interface, quantity</b>	1 female   1 male
<b>Input Voltage</b>	10–30 Vdc
<b>Internal RET</b>	High band (2)
<b>Power Consumption, idle state, maximum</b>	1 W
<b>Power Consumption, normal conditions, maximum</b>	10 W
<b>Protocol</b>	3GPP/AISG 2.0 (Single RET)

## Dimensions

<b>Width</b>	300 mm   11.811 in
<b>Depth</b>	115 mm   4.528 in
<b>Length</b>	1400 mm   55.118 in
<b>Net Weight, without mounting kit</b>	14 kg   30.865 lb

# VV-65A-R2

## Port Configuration



## Electrical Specifications

<b>Impedance</b>	50 ohm
<b>Operating Frequency Band</b>	1695 – 2690 MHz

# VV-65A-R2

<b>Polarization</b>	±45°
<b>Total Input Power, maximum</b>	450 W @ 50 °C

## Electrical Specifications

Frequency Band, MHz	1695–1880	1850–1990	1920–2180	2300–2500	2500–2690
<b>Gain, dBi</b>	17.5	17.7	17.8	17.9	17.7
<b>Beamwidth, Horizontal, degrees</b>	66	66	68	68	67
<b>Beamwidth, Vertical, degrees</b>	6.7	6.3	5.9	5.2	4.9
<b>Beam Tilt, degrees</b>	0–10	0–10	0–10	0–10	0–10
<b>USLS (First Lobe), dB</b>	17	18	19	20	20
<b>Front-to-Back Ratio at 180°, dB</b>	33	35	36	32	32
<b>Isolation, Cross Polarization, dB</b>	28	28	28	28	28
<b>Isolation, Inter-band, dB</b>	28	28	28	28	28
<b>VSWR   Return loss, dB</b>	1.5   14.0	1.5   14.0	1.5   14.0	1.5   14.0	1.5   14.0
<b>PIM, 3rd Order, 2 x 20 W, dBc</b>	-153	-153	-153	-153	-153
<b>Input Power per Port at 50°C, maximum, watts</b>	300	300	300	300	250

## Electrical Specifications, BASTA

Frequency Band, MHz	1695–1880	1850–1990	1920–2180	2300–2500	2500–2690
<b>Gain by all Beam Tilts, average, dBi</b>	17.1	17.4	17.6	17.6	17.5
<b>Gain by all Beam Tilts Tolerance, dB</b>	±0.5	±0.4	±0.3	±0.4	±0.3
<b>Gain by Beam Tilt, average, dBi</b>	0°   16.8 5°   17.1 10°   17.1	0°   17.1 5°   17.4 10°   17.5	0°   17.3 5°   17.6 10°   17.6	0°   17.4 5°   17.7 10°   17.6	0°   17.3 5°   17.6 10°   17.4
<b>Beamwidth, Horizontal Tolerance, degrees</b>	±3.7	±3	±3.2	±3.7	±5.6
<b>Beamwidth, Vertical Tolerance, degrees</b>	±0.4	±0.2	±0.4	±0.2	±0.2
<b>USLS, beampeak to 20° above beampeak, dB</b>	16	17	16	16	16
<b>Front-to-Back Total Power at 180° ± 30°, dB</b>	25	25	27	26	23
<b>CPR at Boresight, dB</b>	16	16	17	19	22

# VV-65A-R2

---

<b>CPR at Sector, dB</b>	11	10	12	9	11
--------------------------	----	----	----	---	----

## Mechanical Specifications

<b>Mechanical Tilt Range</b>	0°–18°
<b>Wind Loading @ Velocity, frontal</b>	510.0 N @ 150 km/h (114.7 lbf @ 150 km/h)
<b>Wind Loading @ Velocity, lateral</b>	131.0 N @ 150 km/h (29.5 lbf @ 150 km/h)
<b>Wind Loading @ Velocity, rear</b>	608.0 N @ 150 km/h (136.7 lbf @ 150 km/h)
<b>Wind Speed, maximum</b>	241 km/h (150 mph)

## Packaging and Weights

<b>Width, packed</b>	445 mm   17.52 in
<b>Depth, packed</b>	240 mm   9.449 in
<b>Length, packed</b>	1520 mm   59.843 in
<b>Weight, gross</b>	22.9 kg   50.486 lb

## Regulatory Compliance/Certifications

<b>Agency</b>	<b>Classification</b>
CHINA-ROHS	Above maximum concentration value
ISO 9001:2015	Designed, manufactured and/or distributed under this quality management system
ROHS	Compliant/Exempted
UK-ROHS	Compliant/Exempted



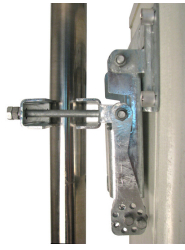
## Included Products

BSAMNT-3	–	Wide Profile Antenna Downtilt Mounting Kit for 2.4 - 4.5 in (60 - 115 mm) OD round members. Kit contains one scissor top bracket set and one bottom bracket set.
----------	---	--

## \* Footnotes

<b>Performance Note</b>	Severe environmental conditions may degrade optimum performance
-------------------------	---

# BSAMNT-3



Wide Profile Antenna Downtilt Mounting Kit for 2.4 - 4.5 in (60 - 115 mm) OD round members. Kit contains one scissor top bracket set and one bottom bracket set.

## Product Classification

**Product Type** Downtilt mounting kit

## General Specifications

**Application** Outdoor

**Color** Silver

## Dimensions

**Compatible Diameter, maximum** 115 mm | 4.528 in

**Compatible Diameter, minimum** 60 mm | 2.362 in

**Weight, net** 6.2 kg | 13.669 lb

## Material Specifications

**Material Type** Galvanized steel

## Packaging and Weights

**Included** Brackets | Hardware

**Packaging quantity** 1

**Weight, gross** 6.4 kg | 14.11 lb

## Regulatory Compliance/Certifications

Agency	Classification
CE	Compliant with the relevant CE product directives
CHINA-ROHS	Below maximum concentration value
ISO 9001:2015	Designed, manufactured and/or distributed under this quality management system
REACH-SVHC	Compliant as per SVHC revision on <a href="http://www.commscope.com/ProductCompliance">www.commscope.com/ProductCompliance</a>
ROHS	Compliant
UK-ROHS	Compliant

# BSAMNT-3

---

