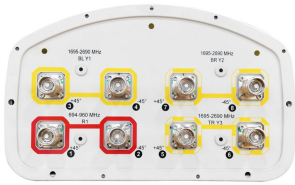


# RV365D-M-V2



8-port sector antenna, 2x 694–960 and 6x 1695–2690 MHz, 65° HPBW, RET compatible.

- Includes manually adjustable electrical tilt
- Can be upgraded to RET capable by installing up to 4 x ACCURET-A20 RET Actuators (rear mounted) - purchase separately

## OBSOLETE

This product was discontinued on: **November 30, 2023**

### Replaced By:

RV3-65D-R4-V3

8-port sector antenna, 2x 694–960 and 6x 1695–2690 MHz, 65° HPBW, 4x IntRET. Antenna rear wind loading 506N @ 150km/h

## General Specifications

|   |  |
|---|--|
| <b>Antenna Type</b>                     | Sector   |
| <b>Band</b>                             | Multiband  |
| <b>Grounding Type</b>                   | RF connector inner conductor and body grounded to reflector and mounting bracket                                     |
| <b>Performance Note</b>                 | Outdoor usage   Wind loading figures are validated by wind tunnel measurements described in white paper WP-112534-EN |
| <b>Radome Material</b>                  | Fiberglass, UV resistant   |
| <b>Radiator Material</b>                | Low loss circuit board   |
| <b>Reflector Material</b>               | Aluminum   |
| <b>RF Connector Interface</b>           | 4.3-10 Female  |
| <b>RF Connector Location</b>            | Bottom   |
| <b>RF Connector Quantity, high band</b> | 6  |
| <b>RF Connector Quantity, low band</b>  | 2  |
| <b>RF Connector Quantity, total</b>     | 8  |

## Dimensions

|               |                      |
|---------------|----------------------|
| <b>Width</b>  | 301 mm   11.85 in    |
| <b>Depth</b>  | 180 mm   7.087 in    |
| <b>Length</b> | 2645 mm   104.134 in |

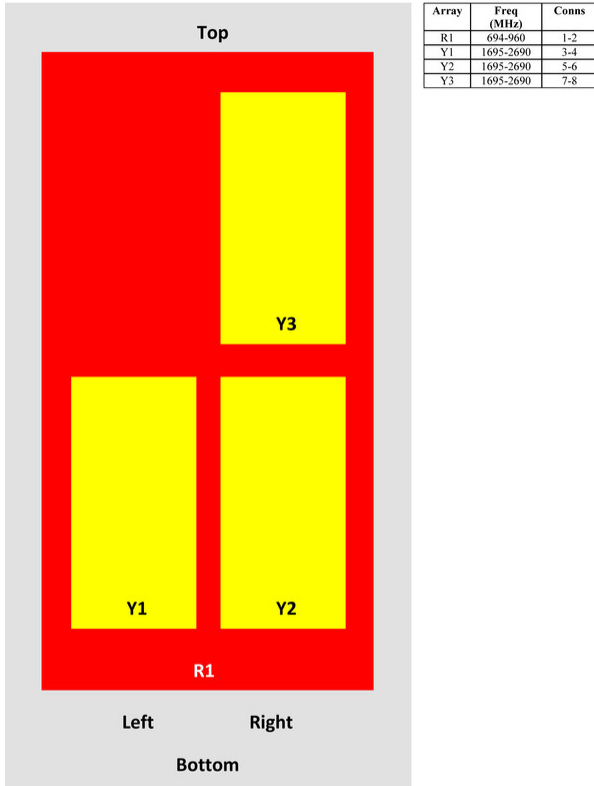
# RV365D-M-V2

Net Weight, without mounting kit

31.5 kg | 69.446 lb

## Array Layout

RV365D-M, RV365D-3X2



View from the front of the antenna

(Sizes of colored boxes are not true depictions of array sizes)

## Electrical Specifications

|                                   |                                 |
|-----------------------------------|---------------------------------|
| <b>Impedance</b>                  | 50 ohm                          |
| <b>Operating Frequency Band</b>   | 1695 – 2690 MHz   694 – 960 MHz |
| <b>Polarization</b>               | ±45°                            |
| <b>Total Input Power, maximum</b> | 1,000 W @ 50 °C                 |

## Electrical Specifications

| Frequency Band, MHz | 694–790 | 790–890 | 890–960 | 1695–1920 | 1920–2200 | 2300–2500 | 2500–2690 |
|---------------------|---------|---------|---------|-----------|-----------|-----------|-----------|
| <b>Gain, dBi</b>    | 16.5    | 16.8    | 16.7    | 17        | 17.9      | 18.1      | 18.1      |

# RV365D-M-V2

|   |          |          |          |          |          |          |          |
|---|----------|----------|----------|----------|----------|----------|----------|
| <b>Beamwidth, Horizontal, degrees</b>               | 70       | 69       | 66       | 61       | 60       | 62       | 60       |
| <b>Beamwidth, Vertical, degrees</b>                 | 8.1      | 7.4      | 6.8      | 7.5      | 6.6      | 5.7      | 5.4      |
| <b>Beam Tilt, degrees</b>                           | 0–10     | 0–10     | 0–10     | 2–12     | 2–12     | 2–12     | 2–12     |
| <b>USLS (First Lobe), dB</b>                        | 15       | 20       | 16       | 19       | 15       | 16       | 15       |
| <b>Front-to-Back Ratio at 180°, dB</b>              | 28       | 34       | 33       | 30       | 31       | 34       | 33       |
| <b>Isolation, Cross Polarization, dB</b>            | 28       | 28       | 28       | 25       | 25       | 25       | 25       |
| <b>Isolation, Inter-band, dB</b>                    | 30       | 30       | 30       | 30       | 30       | 30       | 30       |
| <b>VSWR   Return loss, dB</b>                       | 1.5 14.0 | 1.5 14.0 | 1.5 14.0 | 1.5 14.0 | 1.5 14.0 | 1.5 14.0 | 1.5 14.0 |
| <b>PIM, 3rd Order, 2 x 20 W, dBc</b>                | -153     | -153     | -153     | -153     | -153     | -153     | -153     |
| <b>Input Power per Port at 50°C, maximum, watts</b> | 300      | 300      | 300      | 250      | 250      | 200      | 200      |

## Electrical Specifications, BASTA

| <b>Frequency Band, MHz</b>                         | <b>694–790</b>                 | <b>790–890</b>                 | <b>890–960</b>                 | <b>1695–1920</b>               | <b>1920–2200</b>               | <b>2300–2500</b>               | <b>2500–2690</b>               |
|--|--------------------------------|--------------------------------|--------------------------------|--------------------------------|--------------------------------|--------------------------------|--------------------------------|
| <b>Gain by all Beam Tilts, average, dBi</b>        | 16.2                           | 16.6                           | 16.5                           | 16.5                           | 17.4                           | 17.7                           | 17.7                           |
| <b>Gain by all Beam Tilts Tolerance, dB</b>        | ±0.4                           | ±0.3                           | ±0.4                           | ±0.8                           | ±0.6                           | ±0.5                           | ±0.6                           |
| <b>Gain by Beam Tilt, average, dBi</b>             | 0° 16.1<br>5° 16.3<br>10° 16.2 | 0° 16.5<br>5° 16.7<br>10° 16.4 | 0° 16.6<br>5° 16.6<br>10° 16.2 | 2° 16.4<br>7° 16.6<br>12° 16.3 | 2° 17.3<br>7° 17.6<br>12° 17.2 | 2° 17.5<br>7° 17.9<br>12° 17.4 | 2° 17.4<br>7° 17.9<br>12° 17.4 |
| <b>Beamwidth, Horizontal Tolerance, degrees</b>    | ±1.8                           | ±1.1                           | ±2.4                           | ±5.4                           | ±4.7                           | ±5.8                           | ±5.7                           |
| <b>Beamwidth, Vertical Tolerance, degrees</b>      | ±0.4                           | ±0.4                           | ±0.4                           | ±0.6                           | ±0.6                           | ±0.4                           | ±0.3                           |
| <b>USLS, beampeak to 20° above beampeak, dB</b>    | 14                             | 15                             | 14                             | 11                             | 14                             | 13                             | 12                             |
| <b>Front-to-Back Total Power at 180° ± 30°, dB</b> | 23                             | 25                             | 23                             | 24                             | 25                             | 26                             | 25                             |
| <b>CPR at Boresight, dB</b>                        | 20                             | 22                             | 21                             | 15                             | 17                             | 18                             | 18                             |
| <b>CPR at Sector, dB</b>                           | 13                             | 16                             | 12                             | 9                              | 8                              | 6                              | 9                              |

## Mechanical Specifications

|   |   |
|---|---|
| <b>Wind Loading @ Velocity, frontal</b> | 433.0 N @ 150 km/h (97.3 lbf @ 150 km/h)  |
| <b>Wind Loading @ Velocity, lateral</b> | 367.0 N @ 150 km/h (82.5 lbf @ 150 km/h)  |
| <b>Wind Loading @ Velocity, maximum</b> | 834.0 N @ 150 km/h (187.5 lbf @ 150 km/h) |
| <b>Wind Loading @ Velocity, rear</b>    | 439.0 N @ 150 km/h (98.7 lbf @ 150 km/h)  |

# RV365D-M-V2

---

**Wind Speed, maximum** 241 km/h (150 mph)

## Packaging and Weights

**Width, packed** 409 mm | 16.102 in  
**Depth, packed** 309 mm | 12.165 in  
**Length, packed** 2894 mm | 113.937 in  
**Weight, gross** 51.1 kg | 112.656 lb

## Regulatory Compliance/Certifications

| Agency        | Classification   |
|---------------|--|
| CHINA-ROHS    | Below maximum concentration value  |
| ISO 9001:2015 | Designed, manufactured and/or distributed under this quality management system   |
| REACH-SVHC    | Compliant as per SVHC revision on <a href="http://www.commscope.com/ProductCompliance">www.commscope.com/ProductCompliance</a> |
| ROHS          | Compliant  |
| UK-ROHS       | Compliant  |



## Included Products

- BSAMNT-3 – Wide Profile Antenna Downtilt Mounting Kit for 2.4 - 4.5 in (60 - 115 mm) OD round members. Kit contains one scissor top bracket set and one bottom bracket set.
- BSAMNT-M – Middle Downtilt Mounting Kit for Long Antennas for 2.4 - 4.5 in (60 - 115 mm) OD round members. Kit contains one scissor bracket set.

## \* Footnotes

**Performance Note** Severe environmental conditions may degrade optimum performance

# BSAMNT-3



Wide Profile Antenna Downtilt Mounting Kit for 2.4 - 4.5 in (60 - 115 mm) OD round members. Kit contains one scissor top bracket set and one bottom bracket set.

## Product Classification

**Product Type** Downtilt mounting kit

## General Specifications

**Application** Outdoor

**Color** Silver

## Dimensions

**Compatible Diameter, maximum** 115 mm | 4.528 in

**Compatible Diameter, minimum** 60 mm | 2.362 in

**Weight, net** 6.2 kg | 13.669 lb

## Material Specifications

**Material Type** Galvanized steel

## Packaging and Weights

**Included** Brackets | Hardware

**Packaging quantity** 1

**Weight, gross** 6.4 kg | 14.11 lb

## Regulatory Compliance/Certifications

| Agency        | Classification   |
|---------------|--|
| CE            | Compliant with the relevant CE product directives  |
| CHINA-ROHS    | Below maximum concentration value  |
| ISO 9001:2015 | Designed, manufactured and/or distributed under this quality management system   |
| REACH-SVHC    | Compliant as per SVHC revision on <a href="http://www.commscope.com/ProductCompliance">www.commscope.com/ProductCompliance</a> |
| ROHS          | Compliant  |
| UK-ROHS       | Compliant  |

# BSAMNT-3

---



# BSAMNT-M



Middle Downtilt Mounting Kit for Long Antennas for 2.4 - 4.5 in (60 - 115 mm) OD round members. Kit contains one scissor bracket set.

## Product Classification

**Product Type** Downtilt mounting kit

## General Specifications

**Application** Outdoor

**Color** Silver

## Dimensions

**Compatible Diameter, maximum** 115 mm | 4.528 in

**Compatible Diameter, minimum** 60 mm | 2.362 in

**Weight, net** 4.5 kg | 9.921 lb

## Material Specifications

**Material Type** Galvanized steel

## Packaging and Weights

**Included** Brackets | Hardware

**Packaging quantity** 1

## Regulatory Compliance/Certifications

| Agency        | Classification   |
|---------------|--|
| CHINA-ROHS    | Below maximum concentration value  |
| ISO 9001:2015 | Designed, manufactured and/or distributed under this quality management system   |
| REACH-SVHC    | Compliant as per SVHC revision on <a href="http://www.commscope.com/ProductCompliance">www.commscope.com/ProductCompliance</a> |
| ROHS          | Compliant  |
| UK-ROHS       | Compliant  |

