

# NN-65A-R2

---

4-port sector antenna, 4x 698–896 MHz, 65° HPBW, 2x RET(ATM200)

- Excellent choice to maximize both coverage and capacity in suburban and rural applications
- 4 port low band antenna for 4X MIMO applications and high data throughput

## OBSOLETE

This product was discontinued on: March 27, 2020

## General Specifications

<b>Antenna Type</b>	Sector
<b>Band</b>	Single band
<b>Color</b>	Light Gray (RAL 7035)
<b>Grounding Type</b>	RF connector inner conductor and body grounded to reflector and mounting bracket
<b>Performance Note</b>	Outdoor usage
<b>Radome Material</b>	Fiberglass, UV resistant
<b>Radiator Material</b>	Aluminum
<b>RF Connector Interface</b>	7-16 DIN Female
<b>RF Connector Location</b>	Bottom
<b>RF Connector Quantity, low band</b>	4
<b>RF Connector Quantity, total</b>	4

## Dimensions

<b>Width</b>	682 mm   26.85 in
<b>Depth</b>	181 mm   7.126 in
<b>Length</b>	1394 mm   54.882 in
<b>Net Weight, without mounting kit</b>	30.3 kg   66.8 lb

## Electrical Specifications

<b>Impedance</b>	50 ohm
<b>Operating Frequency Band</b>	698 – 896 MHz
<b>Polarization</b>	±45°
<b>Total Input Power, maximum</b>	600 W @ 50 °C

# NN-65A-R2

## Electrical Specifications

Frequency Band, MHz	698–806	806–896
Gain, dBi	13.4	13.9
Beamwidth, Horizontal, degrees	62	62
Beamwidth, Vertical, degrees	16.3	14.6
Beam Tilt, degrees	0–10	0–10
USLS (First Lobe), dB	18	19
Front-to-Back Ratio at 180°, dB	31	30
Isolation, Cross Polarization, dB	30	30
VSWR   Return loss, dB	1.4   15.6	1.4   15.6
PIM, 3rd Order, 2 x 20 W, dBc	-153	-153
Input Power per Port at 50°C, maximum, watts	350	350

## Electrical Specifications, BASTA

Frequency Band, MHz	698–806	806–896
Gain by all Beam Tilts, average, dBi	14.6	15
Gain by all Beam Tilts Tolerance, dB	±0.3	±0.3
Gain by Beam Tilt, average, dBi	0°   14.6 5°   14.6 10°   14.6	0°   14.9 5°   15.0 10°   14.9
Beamwidth, Horizontal Tolerance, degrees	±1.7	±2.1
Beamwidth, Vertical Tolerance, degrees	±1.1	±0.7
USLS, beampeak to 20° above beampeak, dB	23	19
Front-to-Back Total Power at 180° ± 30°, dB	21	20
CPR at Boresight, dB	25	21
CPR at Sector, dB	13	13

## Mechanical Specifications

Wind Loading @ Velocity, frontal	1,003.0 N @ 150 km/h (225.5 lbf @ 150 km/h)
Wind Loading @ Velocity, lateral	143.0 N @ 150 km/h (32.1 lbf @ 150 km/h)
Wind Loading @ Velocity, rear	1,177.0 N @ 150 km/h (264.6 lbf @ 150 km/h)
Wind Speed, maximum	241 km/h (150 mph)

## Packaging and Weights

Width, packed	852 mm   33.543 in
---------------	--------------------

# NN-65A-R2

---

<b>Depth, packed</b>	351 mm   13.819 in
<b>Length, packed</b>	1746 mm   68.74 in
<b>Weight, gross</b>	49.1 kg   108.247 lb

## Regulatory Compliance/Certifications

<b>Agency</b>	<b>Classification</b>
CHINA-ROHS	Below maximum concentration value
ISO 9001:2015	Designed, manufactured and/or distributed under this quality management system
ROHS	Compliant
UK-ROHS	Compliant



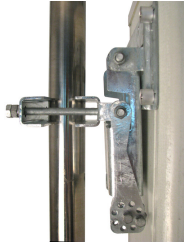
## Included Products

- BSAMNT-3 – Wide Profile Antenna Downtilt Mounting Kit for 2.4 - 4.5 in (60 - 115 mm) OD round members. Kit contains one scissor top bracket set and one bottom bracket set.

## \* Footnotes

**Performance Note** Severe environmental conditions may degrade optimum performance

# BSAMNT-3



Wide Profile Antenna Downtilt Mounting Kit for 2.4 - 4.5 in (60 - 115 mm) OD round members. Kit contains one scissor top bracket set and one bottom bracket set.

## Product Classification

**Product Type** Downtilt mounting kit

## General Specifications

**Application** Outdoor

**Color** Silver

## Dimensions

**Compatible Diameter, maximum** 115 mm | 4.528 in

**Compatible Diameter, minimum** 60 mm | 2.362 in

**Weight, net** 6.2 kg | 13.669 lb

## Material Specifications

**Material Type** Galvanized steel

## Packaging and Weights

**Included** Brackets | Hardware

**Packaging quantity** 1

**Weight, gross** 6.4 kg | 14.11 lb

## Regulatory Compliance/Certifications

Agency	Classification
CE	Compliant with the relevant CE product directives
CHINA-ROHS	Below maximum concentration value
ISO 9001:2015	Designed, manufactured and/or distributed under this quality management system
REACH-SVHC	Compliant as per SVHC revision on <a href="http://www.commscope.com/ProductCompliance">www.commscope.com/ProductCompliance</a>
ROHS	Compliant
UK-ROHS	Compliant

# BSAMNT-3

---

