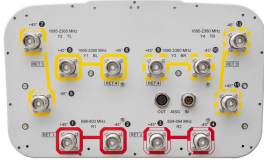


# JAH4-65B-R4



12-port sector antenna, 2x 698-803, 2x 824-894 and 8x 1695-2360 MHz, 65° HPBW, 4x RETs and low bands have diplexers.

- Internal filter on low band and interleaved dipole technology providing for attractive, low wind load mechanical package
- One RET for 700MHz, one RET for 850MHz, and one RET for each side-by-side pair of high bands to ensure same tilt level for 4x Rx or 4x MIMO
- The antenna is supplied with mounting kits that provide 0 degree of mechanical downtilt; optional downtilt mounting kits are available

## General Specifications

<b>Antenna Type</b>	Sector
<b>Band</b>	Multiband
<b>Color</b>	Light Gray (RAL 7035)
<b>Grounding Type</b>	RF connector body grounded to reflector and mounting bracket
<b>Performance Note</b>	Outdoor usage   Wind loading figures are validated by wind tunnel measurements described in white paper WP-112534-EN
<b>Radome Material</b>	Fiberglass, UV resistant
<b>Radiator Material</b>	Low loss circuit board
<b>Reflector Material</b>	Aluminum
<b>RF Connector Interface</b>	4.3-10 Female
<b>RF Connector Location</b>	Bottom
<b>RF Connector Quantity, high band</b>	8
<b>RF Connector Quantity, low band</b>	4
<b>RF Connector Quantity, total</b>	12

## Remote Electrical Tilt (RET) Information

<b>RET Hardware</b>	CommRET v2
<b>RET Interface</b>	8-pin DIN Female   8-pin DIN Male
<b>RET Interface, quantity</b>	1 female   1 male
<b>Input Voltage</b>	10-30 Vdc
<b>Internal RET</b>	High band (2)   Low band (2)
<b>Power Consumption, active state, maximum</b>	8 W
<b>Power Consumption, idle state, maximum</b>	1 W

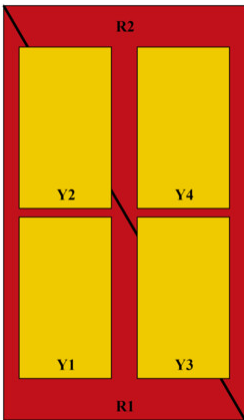
# JAH4-65B-R4

**Power Consumption, normal conditions, maximum** 8 W  
**Protocol** 3GPP/AISG 2.0 (Multi-RET)

## Dimensions

**Width** 350 mm | 13.78 in  
**Depth** 208 mm | 8.189 in  
**Length** 1828 mm | 71.969 in  
**Net Weight, antenna only** 32.7 kg | 72.091 lb

## Array Layout

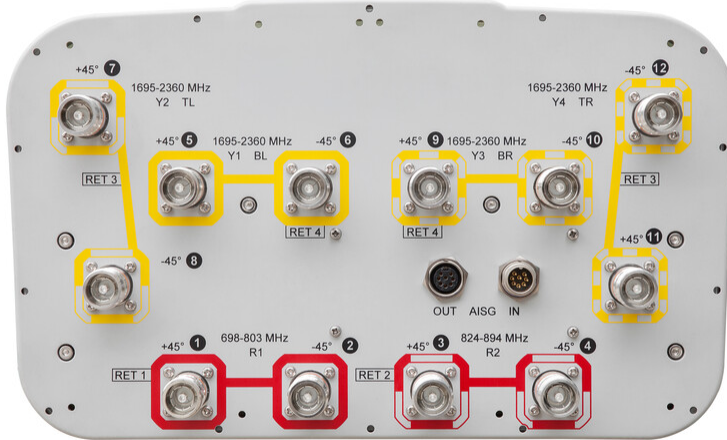


Array ID	Frequency (MHz)	RF Connector	HPBW	RET (MRET)	AISG No.	AISG RET UID
R1	698-803	1 - 2	65°	1	AISG1	CPxxxxxxxxxxxxMM.1
R2	824-894	3 - 4	65°	2	AISG1	CPxxxxxxxxxxxxMM.2
Y2	1695-2360	7 - 8	65°	3	AISG1	CPxxxxxxxxxxxxMM.3
Y4	1695-2360	11 - 12	65°			
Y1	1695-2360	5 - 6	65°	4	AISG1	CPxxxxxxxxxxxxMM.4
Y3	1695-2360	9 - 10	65°			

(Sizes of colored boxes are not true depictions of array sizes)

## Port Configuration

# JAH4-65B-R4



## Electrical Specifications

<b>Impedance</b>	50 ohm
<b>Operating Frequency Band</b>	1695 – 2360 MHz   698 – 803 MHz   824 – 894 MHz
<b>Polarization</b>	±45°
<b>Total Input Power, maximum</b>	900 W

## Electrical Specifications

	<b>R1</b>	<b>R2</b>	<b>Y1-Y2</b>	<b>Y1-Y2</b>	<b>Y1-Y2</b>	<b>Y1-Y2</b>
<b>Frequency Band, MHz</b>	<b>698–803</b>	<b>824–894</b>	<b>1695–1880</b>	<b>1850–1990</b>	<b>1920–2180</b>	<b>2300–2360</b>
<b>RF Port</b>	1-2	3-4	5-12	5-12	5-12	5-12
<b>Gain, dBi</b>	14.9	15.4	15.8	16.1	16.3	16.8
<b>Beamwidth, Horizontal, degrees</b>	68	66	63	61	63	68
<b>Beamwidth, Vertical, degrees</b>	11.8	10.4	11	10.3	9.7	8.9
<b>Beam Tilt, degrees</b>	2–14	2–14	2–14	2–14	2–14	2–14
<b>USLS (First Lobe), dB</b>	20	19	18	18	19	19
<b>Front-to-Back Ratio at 180°, dB</b>	32	34	35	39	35	38
<b>Isolation, Cross Polarization, dB</b>	25	25	25	25	25	25

# JAH4-65B-R4

<b>Isolation, Inter-band, dB</b>	30	30	30	30	30	30
<b>VSWR   Return loss, dB</b>	1.5 14.0	1.5 14.0	1.5 14.0	1.5 14.0	1.5 14.0	1.5 14.0
<b>PIM, 3rd Order, 2 x 20 W, dBc</b>	-150	-150	-150	-150	-150	-150
<b>Input Power per Port at 50°C, maximum, watts</b>	300	300	250	250	250	200

## Electrical Specifications, BASTA

<b>Frequency Band, MHz</b>	<b>698–803</b>	<b>824–894</b>	<b>1695–1880</b>	<b>1850–1990</b>	<b>1920–2180</b>	<b>2300–2360</b>
<b>Gain by all Beam Tilts, average, dBi</b>	14.5	15	15	15.6	15.8	16.2
<b>Gain by all Beam Tilts Tolerance, dB</b>	±0.3	±0.3	±0.7	±0.3	±0.3	±0.4
<b>Beamwidth, Horizontal Tolerance, degrees</b>	±1.7	±1.3	±3.9	±1.9	±2.1	±4
<b>Beamwidth, Vertical Tolerance, degrees</b>	±0.8	±0.4	±0.6	±0.6	±0.6	±0.3
<b>USLS, beampeak to 20° above beampeak, dB</b>	20	18	18	18	18	16
<b>Front-to-Back Total Power at 180° ± 30°, dB</b>	25	23	27	29	26	28
<b>CPR at Boresight, dB</b>	18	17	18	20	18	19
<b>CPR at Sector, dB</b>	10	11	11	9	11	10

## Mechanical Specifications

<b>Wind Loading @ Velocity, frontal</b>	301.0 N @ 150 km/h (67.7 lbf @ 150 km/h)
<b>Wind Loading @ Velocity, lateral</b>	254.0 N @ 150 km/h (57.1 lbf @ 150 km/h)
<b>Wind Loading @ Velocity, maximum</b>	638.0 N @ 150 km/h (143.4 lbf @ 150 km/h)
<b>Wind Loading @ Velocity, rear</b>	319.0 N @ 150 km/h (71.7 lbf @ 150 km/h)
<b>Wind Speed, maximum</b>	241 km/h (150 mph)

## Packaging and Weights

<b>Width, packed</b>	456 mm   17.953 in
<b>Depth, packed</b>	357 mm   14.055 in
<b>Length, packed</b>	1975 mm   77.756 in
<b>Weight, gross</b>	42.1 kg   92.815 lb

## Regulatory Compliance/Certifications

<b>Agency</b>	<b>Classification</b>
---------------	-----------------------

# JAH4-65B-R4

---

CHINA-ROHS	Above maximum concentration value
ISO 9001:2015	Designed, manufactured and/or distributed under this quality management system
ROHS	Compliant/Exempted
UK-ROHS	Compliant/Exempted



## Included Products

BSAMNT-2F	–	Mounting bracket for cylindrical pipe installations (60-115mm pipe diameter) for fix mechanical tilt applications.
-----------	---	--

## \* Footnotes

<b>Performance Note</b>	Severe environmental conditions may degrade optimum performance
-------------------------	---