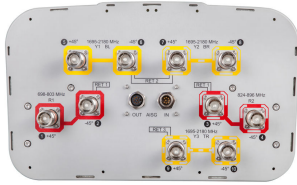


# JAH3-65C-R3



10-port sector antenna, 2x 698–803, 2x 824–896 and 6x 1695–2180 MHz, 65° HPBW, 3x RETs and low bands have diplexers

## OBSOLETE

This product was discontinued on: March 27, 2020

## General Specifications

<b>Antenna Type</b>	Sector
<b>Band</b>	Multiband
<b>Color</b>	Light Gray (RAL 7035)
<b>Grounding Type</b>	RF connector inner conductor and body grounded to reflector and mounting bracket
<b>Performance Note</b>	Outdoor usage   Wind loading figures are validated by wind tunnel measurements described in white paper WP-112534-EN
<b>Radome Material</b>	Fiberglass, UV resistant
<b>Radiator Material</b>	Aluminum   Low loss circuit board
<b>Reflector Material</b>	Aluminum
<b>RF Connector Interface</b>	4.3-10 Female
<b>RF Connector Location</b>	Bottom
<b>RF Connector Quantity, high band</b>	6
<b>RF Connector Quantity, low band</b>	4
<b>RF Connector Quantity, total</b>	10

## Remote Electrical Tilt (RET) Information

<b>RET Interface</b>	8-pin DIN Female   8-pin DIN Male
<b>RET Interface, quantity</b>	1 female   1 male
<b>Input Voltage</b>	10–30 Vdc
<b>Internal RET</b>	High band (2)   Low band (1)

# JAH3-65C-R3

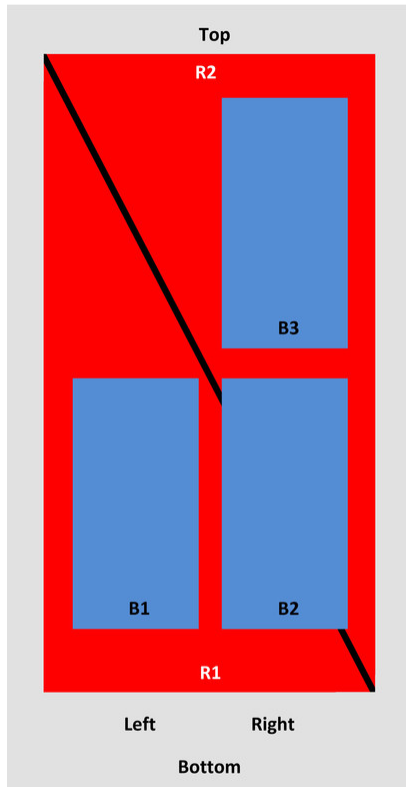
<b>Power Consumption, idle state, maximum</b>	2 W
<b>Power Consumption, normal conditions, maximum</b>	13 W
<b>Protocol</b>	3GPP/AISG 2.0 (Multi-RET)

## Dimensions

<b>Width</b>	350 mm   13.78 in
<b>Depth</b>	208 mm   8.189 in
<b>Length</b>	2438 mm   95.984 in
<b>Net Weight, without mounting kit</b>	31.3 kg   69.005 lb

## Array Layout

JAH3-65C-R3



Array	Freq (MHz)	Conns	RET (MRET)	AISG RET UID
R1	698-803	1-2	1	ANXXXXXXXXXXXXXXXXX.1
R2	824-896	3-4	1	ANXXXXXXXXXXXXXXXXX.1
B1	1695-2180	5-6	2	ANXXXXXXXXXXXXXXXXX.2
B2	1695-2180	7-8	2	ANXXXXXXXXXXXXXXXXX.2
B3	1695-2180	9-10	3	ANXXXXXXXXXXXXXXXXX.3

View from the front of the antenna  
(Sizes of colored boxes are not true depictions of array sizes)

## Electrical Specifications

# JAH3-65C-R3

<b>Impedance</b>	50 ohm
<b>Operating Frequency Band</b>	1695 – 2180 MHz   698 – 803 MHz   824 – 896 MHz
<b>Polarization</b>	±45°

## Electrical Specifications

Frequency Band, MHz	698–803	824–896	1695–1880	1850–1990	1920–2180
<b>Gain, dBi</b>	15.9	16.4	16.9	17.1	17.4
<b>Beamwidth, Horizontal, degrees</b>	67	65	62	63	64
<b>Beamwidth, Vertical, degrees</b>	9.7	8.6	8.1	7.5	7.1
<b>Beam Tilt, degrees</b>	2–11	2–11	2–12	2–12	2–12
<b>USLS (First Lobe), dB</b>	18	18	16	16	17
<b>Front-to-Back Ratio at 180°, dB</b>	33	36	32	35	36
<b>Isolation, Cross Polarization, dB</b>	28	28	28	28	28
<b>Isolation, Inter-band, dB</b>	30	30	30	30	30
<b>VSWR   Return loss, dB</b>	1.5 14.0	1.5 14.0	1.5 14.0	1.5 14.0	1.5 14.0
<b>PIM, 3rd Order, 2 x 20 W, dBc</b>	-150	-150	-150	-150	-150
<b>Input Power per Port, maximum, watts</b>	350	350	350	350	350

## Electrical Specifications, BASTA

Frequency Band, MHz	698–803	824–896	1695–1880	1850–1990	1920–2180
<b>Gain by all Beam Tilts, average, dBi</b>	15.7	16.2	16.4	16.7	16.9
<b>Gain by all Beam Tilts Tolerance, dB</b>	±0.4	±0.4	±0.5	±0.4	±0.6
<b>Gain by Beam Tilt, average, dBi</b>	2° 15.5 6° 15.5 11° 15.7	2° 16.0 6° 16.2 11° 16.3	2° 16.3 7° 16.5 12° 16.4	2° 16.5 7° 16.8 12° 16.7	2° 16.6 7° 17.0 12° 16.9
<b>Beamwidth, Horizontal Tolerance, degrees</b>	±1.1	±1.1	±3.3	±2.9	±4.3
<b>Beamwidth, Vertical Tolerance, degrees</b>	±0.7	±0.5	±0.5	±0.4	±0.5
<b>USLS, beampeak to 20° above beampeak, dB</b>	17	17	14	14	15
<b>Front-to-Back Total Power at 180° ± 30°, dB</b>	26	25	28	30	27

# JAH3-65C-R3

<b>CPR at Boresight, dB</b>	20	21	18	20	22
<b>CPR at Sector, dB</b>	11	12	11	15	13

## Mechanical Specifications

<b>Wind Loading @ Velocity, frontal</b>	425.0 N @ 150 km/h (95.5 lbf @ 150 km/h)
<b>Wind Loading @ Velocity, lateral</b>	361.0 N @ 150 km/h (81.2 lbf @ 150 km/h)
<b>Wind Loading @ Velocity, maximum</b>	900.0 N @ 150 km/h (202.3 lbf @ 150 km/h)
<b>Wind Loading @ Velocity, rear</b>	451.0 N @ 150 km/h (101.4 lbf @ 150 km/h)
<b>Wind Speed, maximum</b>	241 km/h (150 mph)

## Packaging and Weights

<b>Width, packed</b>	450 mm   17.717 in
<b>Depth, packed</b>	355 mm   13.976 in
<b>Length, packed</b>	2585 mm   101.772 in
<b>Weight, gross</b>	46.1 kg   101.633 lb

## Regulatory Compliance/Certifications

<b>Agency</b>	<b>Classification</b>
CHINA-ROHS	Below maximum concentration value
ISO 9001:2015	Designed, manufactured and/or distributed under this quality management system
ROHS	Compliant
UK-ROHS	Compliant



## Included Products

BSAMNT-3	-	Wide Profile Antenna Downtilt Mounting Kit for 2.4 - 4.5 in (60 - 115 mm) OD round members. Kit contains one scissor top bracket set and one bottom bracket set.
----------	---	--

## \* Footnotes

<b>Performance Note</b>	Severe environmental conditions may degrade optimum performance
-------------------------	---

# BSAMNT-3



Wide Profile Antenna Downtilt Mounting Kit for 2.4 - 4.5 in (60 - 115 mm) OD round members. Kit contains one scissor top bracket set and one bottom bracket set.

## Product Classification

**Product Type** Downtilt mounting kit

## General Specifications

**Application** Outdoor

**Color** Silver

## Dimensions

**Compatible Diameter, maximum** 115 mm | 4.528 in

**Compatible Diameter, minimum** 60 mm | 2.362 in

**Weight, net** 6.2 kg | 13.669 lb

## Material Specifications

**Material Type** Galvanized steel

## Packaging and Weights

**Included** Brackets | Hardware

**Packaging quantity** 1

**Weight, gross** 6.4 kg | 14.11 lb

## Regulatory Compliance/Certifications

Agency	Classification
CE	Compliant with the relevant CE product directives
CHINA-ROHS	Below maximum concentration value
ISO 9001:2015	Designed, manufactured and/or distributed under this quality management system
REACH-SVHC	Compliant as per SVHC revision on <a href="http://www.commscope.com/ProductCompliance">www.commscope.com/ProductCompliance</a>
ROHS	Compliant
UK-ROHS	Compliant

# BSAMNT-3

---

