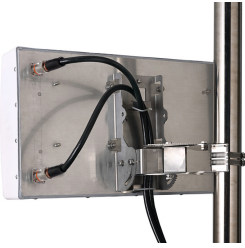


CMAX-DM30-43-V53



Cell-Max™ Low PIM Directional High Capacity Venue MIMO Antenna, 698–960 MHz and 1710–2700 MHz, 30-Deg, 4.3-10

OBSOLETE

This product was discontinued on: December 30, 2023

Replaced By:

CMAX-LHM2-30-I53 Low PIM Directional High Capacity Venue 2x2 MIMO Antenna 4G/5G/C-Band, 617–960 MHz, 1695–2700 MHz and 3300-4200MHz, 4.3-10

Product Classification

Product Type Over-the-head stadium antenna
Product Brand Cell-Max™

General Specifications

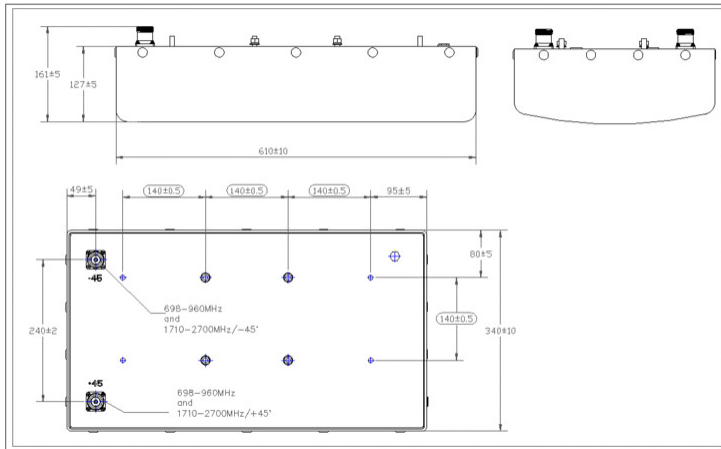
Application Indoor/Outdoor
Antenna Type Directional
Antenna Array Characteristic MIMO 2x2
Polarization ±45°
Color White (RAL 9016)
Number of Ports 2
Radome Material ABS, UV resistant
RF Connector Interface 4.3-10 Female

Dimensions

Width 340.4 mm | 13.402 in
Depth 127 mm | 5 in
Length 609.6 mm | 24 in

CMAX-DM30-43-V53

Outline Drawing



Electrical Specifications

| | |
|-----------------------------|---|
| Impedance | 50 ohm |
| Lightning Protection | dc Ground |
| Electrical Note | Values typical, unless otherwise stated |

Electrical Specifications

| Frequency Band, MHz | 698-800 | 800-960 | 1695-1880 | 1850-1990 | 1920-2180 | 2200-2700 | 2300-2360 |
|--|----------|----------|-----------|-----------|-----------|-----------|-----------|
| Gain, dBi | 11.1 | 11.8 | 10.9 | 11 | 11.3 | 12 | 12 |
| Beamwidth, Horizontal, degrees | 34 | 30 | 34 | 33 | 31 | 26 | 28 |
| Beamwidth, Vertical, degrees | 68 | 61 | 70 | 66 | 65 | 65 | 64 |
| Horizontal Sidelobe, dB | 13 | 13 | 15 | 15 | 15 | 15 | 15 |
| Front-to-Back Total Power at 180° ± 30°, dB | 22 | 22 | 27 | 27 | 27 | 27 | 27 |
| CPR at Boresight, dB | 20 | 20 | 17 | 17 | 17 | 20 | 20 |
| Isolation, Cross Polarization, dB | 25 | 25 | 25 | 25 | 25 | 25 | 25 |
| VSWR Return loss, dB | 1.5 14.0 | 1.5 14.0 | 1.5 14.0 | 1.5 14.0 | 1.5 14.0 | 1.5 14.0 | 1.5 14.0 |
| PIM, 3rd Order, 2 x 20 W, dBc | -153 | -153 | -153 | -153 | -153 | -153 | -153 |
| Input Power per Port, maximum, watts | 200 | 200 | 200 | 200 | 200 | 200 | 200 |

Mechanical Specifications

CMAX-DM30-43-V53

| | |
|---|---|
| Wind Loading @ Velocity, maximum | 686.0 N @ 216 km/h (154.2 lbf @ 216 km/h) |
| Wind Speed, maximum | 216 km/h (134 mph) |

Environmental Specifications

| | |
|---------------------------------------|--------------------------------------|
| Operating Temperature | -40 °C to +60 °C (-40 °F to +140 °F) |
| Relative Humidity | Up to 100% |
| Ingress Protection Test Method | IEC 60529:2001, IP65 |
| Vibration Test Method | ASTM D4169 IEC 60068-2-6 |

Packaging and Weights

| | |
|---------------------------|---------------------|
| Width, packed | 350 mm 13.78 in |
| Depth, packed | 210 mm 8.268 in |
| Length, packed | 890 mm 35.039 in |
| Included | Mounting bracket |
| Packaging quantity | 1 |
| Weight, gross | 12.4 kg 27.337 lb |
| Weight, net | 7 kg 15.432 lb |

Regulatory Compliance/Certifications

| Agency | Classification |
|---------------|--|
| CHINA-ROHS | Below maximum concentration value |
| REACH-SVHC | Compliant as per SVHC revision on www.commscope.com/ProductCompliance |
| ROHS | Compliant |
| UK-ROHS | Compliant |

