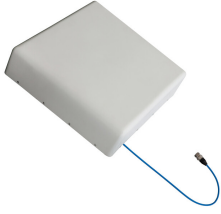


CMAX-D-TCPUSEI53



Low PIM Directional In-building Antenna, 350-470 MHz, 617-960 MHz, 1710-2700 MHz

Product Classification

Product Type In-building antenna

General Specifications

Application Indoor
Antenna Type Directional
Antenna Array Characteristic SISO
Polarization Vertical
Color White (RAL 9016)
Mounting Poles between 30-55 mm with supplied clamps
Number of Ports 1
Pigtail Cable 670-141SXE, plenum rated
Radome Material Fiberglass, UV resistant
RF Connector Interface N Female

Dimensions

Width 330 mm | 12.992 in
Depth 90 mm | 3.543 in
Length 330 mm | 12.992 in
Pigtail Length 500 mm | 19.685 in

Electrical Specifications

Impedance 50 ohm
Operating Frequency Band 1710 - 2700 MHz | 350 - 470 MHz | 617 - 806 MHz | 806 - 960 MHz
Electrical Note Values typical, unless otherwise stated

Electrical Specifications

Frequency Band, MHz	350-470	617-698	698-960	1710-2700
---------------------	---------	---------	---------	-----------

CMAX-D-TCPUSEI53

Gain, dBi	5.2	7	7	9
Beamwidth, Horizontal, degrees	98	70	72	45
Beamwidth, Vertical, degrees	62	54	45	53
VSWR Return loss, dB	1.8 10.9	1.8 10.9	1.8 10.9	1.8 10.9
PIM, 3rd Order, 2 x 20 W, dBc	-153	-153	-153	-153
Input Power per Port, maximum, watts	100	100	100	100

Environmental Specifications

Operating Temperature	-40 °C to +60 °C (-40 °F to +140 °F)
Relative Humidity	Up to 100%

Packaging and Weights

Width, packed	370 mm 14.567 in
Depth, packed	170 mm 6.693 in
Length, packed	470 mm 18.504 in
Packaging quantity	1
Weight, gross	3 kg 6.614 lb
Weight, net	1.9 kg 4.189 lb

Regulatory Compliance/Certifications

Agency	Classification
CHINA-ROHS	Below maximum concentration value
ISO 9001:2015	Designed, manufactured and/or distributed under this quality management system
REACH-SVHC	Compliant as per SVHC revision on www.andrew.com/ProductCompliance
ROHS	Compliant
UK-ROHS	Compliant

