

COMMSCOPE®

now meets next

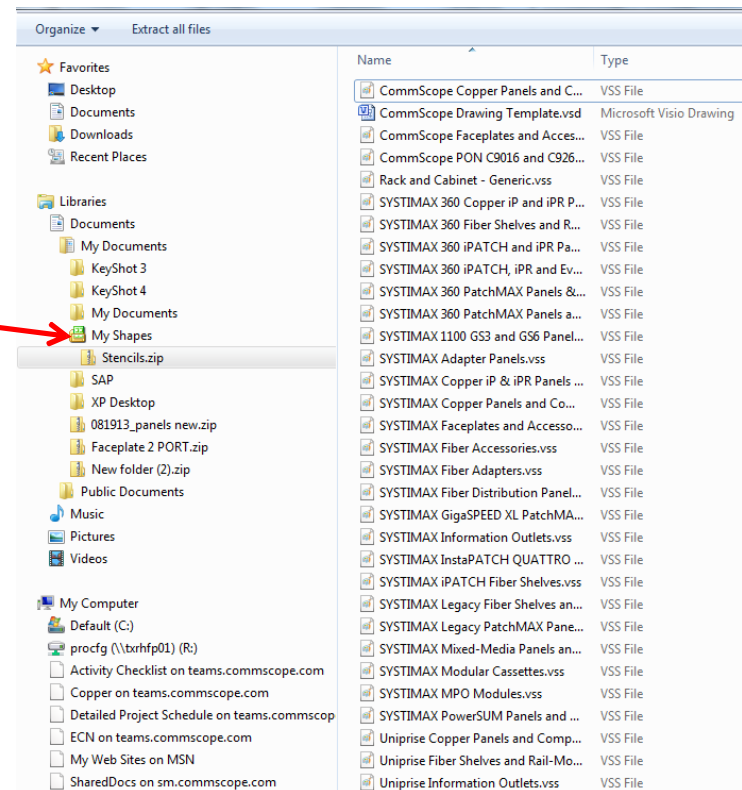
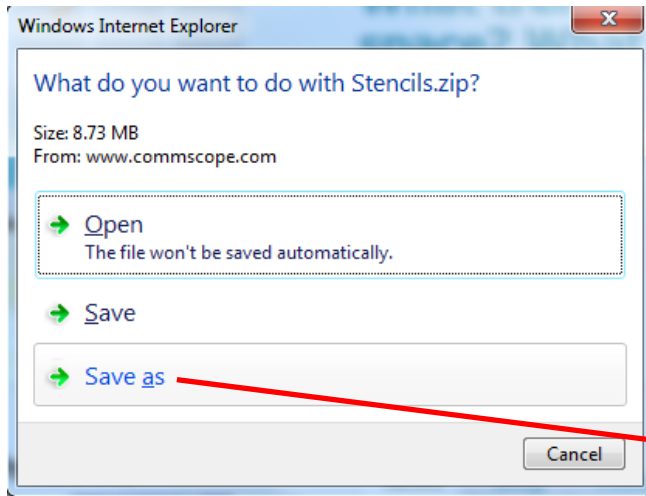
Visio Methodology

Updated: Mar. 31, 2021

Download Materials

Download the Stencils: <https://cdn.commscope.com/resources/visio-stencils/Stencils.zip>

Select “Save as” and navigate to *C:\Users\yourusername\Documents\My Shapes*



All required files will extract into My Shapes

Before You Start

To take advantage of the benefits offered with this Visio methodology, the CommScope drawing template **must** be used. Failure to do so will result in a difficult and unsatisfactory experience.

Some of the benefits of the template are:

- All available CommScope stencils are preloaded
- Software will alert user to any missing stencils or shapes
- Automatic BOM report that is exportable to Excel is built in
- Drawing scale is preset to insure compatibility with shapes from other manufacturers
- Drawing layer is preset to allow visibility of doors and bezels to be toggled
- Title Block information is semi-automatically populated
- Enables search for shapes by product code

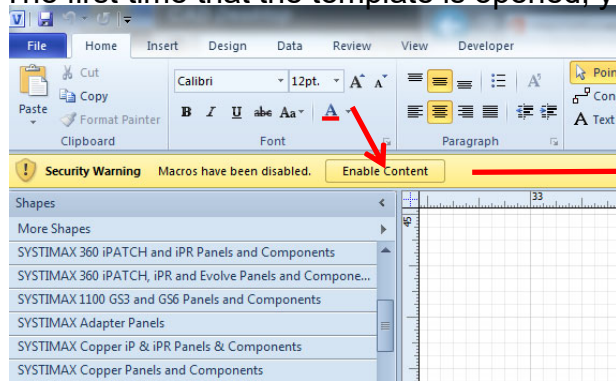
Some shapes use the SYSTIMAX standard Arial font. Arial is a standard font on Windows computers.

To appear correctly, the Arial font will need to be used for the SYSTIMAX shapes.

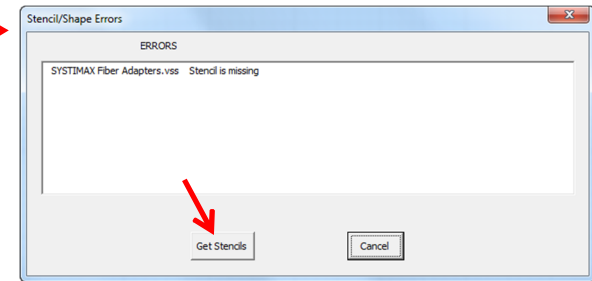
Updating Stencils

CommScope Drawing Template.vsd contains verification software that launches automatically when the template is opened.

The first time that the template is opened, you will be asked to enable macros...

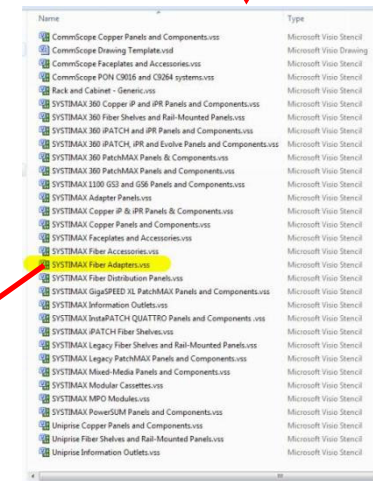
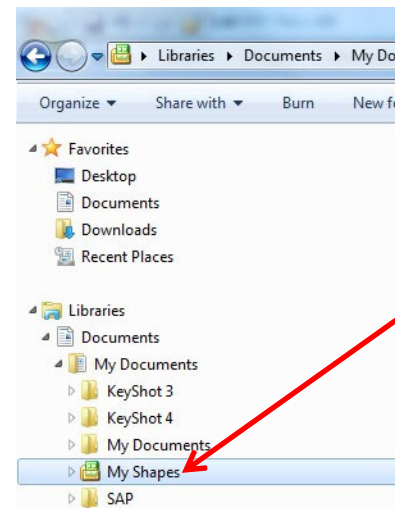
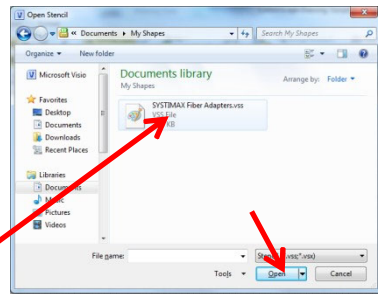
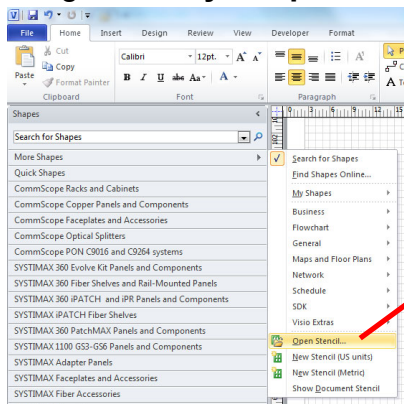


...the software will then run and if it finds any missing shapes or stencils, you will see a message box. Click **“Get Stencils”**...



...select the appropriate stencil and drag it into **“My Shapes”** folder.

Then, in Visio, select **“More Shapes > Open Stencil”** navigate to **“My Shapes”** and **“Open”** the appropriate stencil.



➤Delete all stencils not needed in your design to keep drawing size small and email-able

Working with the Drawing Format

The drawing format is semi-automated. The “FILENAME” title block will automatically update to reflect the renaming of the template. The “DATE” block must be manually updated by selecting the “COMMSCOPE format” tab at the bottom of the screen and changing it on that sheet. The “DRAWN BY” block may be changed in the same manner or by changing the “Author” on the File>Info page. Changes made either way are global. Page numbers will update automatically as sheets are added. The “Page-2” tab has a landscape-oriented version of the format that may alternatively be used. Drawing scale is preset to 1”=10” which is the de facto industry standard for network VISIO shapes. **Caution – scale modification will cause unsatisfactory results! The only instance in which drawing scale should be altered is when laying out a floor plan and locating cabinets in top view orientation.**

The image shows two parts of the software interface. The top part is a header for the drawing format, and the bottom part is a screenshot of the Microsoft Visio application window.

COMMSCOPE Drawing Format Header:

FILENAME	DATE	DRAWN BY	SCALE	PAGE
COMMSCOPE DRAWING TEMPLATE.VSD	12/17/13	WOMACK, WADE	1: 10	1 OF 2

Microsoft Visio Screenshot:

The screenshot shows the Microsoft Visio application window with the "Info" ribbon selected. The "Info" ribbon has several options: Save, Save As, Open, Close, Info (selected), Recent, New, Print, Save & Send, Help, Options, and Exit. A red arrow points from the "Info" ribbon to the "Related People" section in the Properties pane.

Information about VISIO Beta Test Template
 C:\Users\womack\Desktop\Ready Stencils\VISIO Beta Test Template.vsd

Remove Personal Information
 You can remove hidden or personal information that you may not wish to share.

Reduce File Size
 You can reduce the size of this file by letting Visio remove unused items from the file.

Properties

- Content Type: Microsoft Visio Drawing
- Size: 2.2 Mb (2,269,696 bytes)
- Template: CommScope
- Company: Add a category
- Categories: Add a category
- Title: Add a title
- Subject: Specify the subject
- Tags: Add a tag
- Comments: Add comments

Dates

- Last Modified: Yesterday, 3:02 PM
- Created: 3/29/2013 9:49 AM

Related People

- Author: Womack, Wade
- Manager: Add a name

Related Documents

- Womack, Wade

No hyperlinks are associated with this document.

Working with the Drawing Format

The template includes both portrait and landscape versions of the drawing format in “A” sheet size but is easily adjustable to metric sizes using Page Setup

