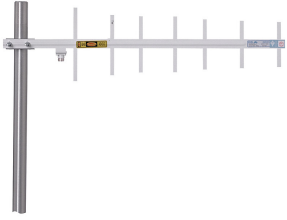


ASPJ810



1-port sector antenna, 870–960 MHz, 60° HPBW, fixed electrical tilt

- Enclosed driven element protects against icing, water penetration, and corrosion
- Unique mounts allow vertical or horizontal polarization

OBSOLETE

This product was discontinued on: February 15, 2023

General Specifications

Antenna Type	Sector
Band	Single band
Color	Off-white
Grounding Type	RF connector inner conductor and body grounded to reflector and mounting bracket
Performance Note	Outdoor usage
Radiator Material	Aluminum
RF Connector Interface	N Female
RF Connector Location	Bottom
RF Connector Quantity, high band	0
RF Connector Quantity, mid band	0
RF Connector Quantity, low band	1
RF Connector Quantity, total	1

Dimensions

Width	180.3 mm 7.098 in
Depth	5.8 mm 0.228 in
Length	685.8 mm 27 in
Net Weight, without mounting kit	0.9 kg 1.984 lb

Electrical Specifications

Impedance	50 ohm
Operating Frequency Band	870 – 960 MHz
Polarization	Vertical

ASPJ810

Electrical Specifications

Frequency Band, MHz	870–960
Gain, dBi	12.1
Beamwidth, Horizontal, degrees	60
Beamwidth, Vertical, degrees	30
Beam Tilt, degrees	0
Front-to-Back Ratio at 180°, dB	20
VSWR Return loss, dB	1.5 14.0
Input Power per Port, maximum, watts	150

Mechanical Specifications

Wind Loading @ Velocity, maximum	71.2 N @ 100 mph (16.0 lbf @ 100 mph)
Wind Speed, maximum	241 km/h (150 mph)

Packaging and Weights

Included	U-bolts
-----------------	---------

Regulatory Compliance/Certifications

Agency	Classification
CE	Compliant with the relevant CE product directives
CHINA-ROHS	Below maximum concentration value
ISO 9001:2015	Designed, manufactured and/or distributed under this quality management system
REACH-SVHC	Compliant as per SVHC revision on www.andrew.com/ProductCompliance
ROHS	Compliant
UK-ROHS	Compliant



* Footnotes

Performance Note	Severe environmental conditions may degrade optimum performance
-------------------------	---