

5NPX1006F



10-port multibeam antenna, 10x 1710–2180 MHz, 5x 10-14° HPBW, fixed electrical tilt

This product will be discontinued on: November 30, 2024

Replaced By:

6V-10M-F6	12-port multibeam antenna, 12x 1695–2690 MHz, 6x 10-14° HPBW, fixed electrical tilt
6VV-10A-F6	24-port multibeam antenna, 24x 1695–2690 MHz, 6x 10-14° HPBW, fixed electrical tilt, 1.3m length

General Specifications

Antenna Type	Multibeam
Band	Single band
Color	Light Gray (RAL 7035)
Grounding Type	RF connector inner conductor and body grounded to reflector and mounting bracket
Performance Note	Outdoor usage
Radome Material	ASA, UV stabilized
Radiator Material	Brass Low loss circuit board
Reflector Material	Aluminum
RF Connector Interface	7-16 DIN Female
RF Connector Location	Bottom
RF Connector Quantity, high band	10
RF Connector Quantity, total	10

Dimensions

Width	864 mm 34.016 in
Depth	202 mm 7.953 in
Length	889 mm 35 in
Net Weight, without mounting kit	29.5 kg 65.036 lb

Electrical Specifications

Impedance	50 ohm
------------------	--------

5NPX1006F

Operating Frequency Band	1710 – 2180 MHz
Polarization	±45°

Electrical Specifications

Frequency Band, MHz	1710–1920	1920–2180
Gain, dBi	21.7	22.3
Beamwidth, Horizontal, degrees	13	12
Beamwidth, Vertical, degrees	11.9	10.9
Beam Tilt, degrees	6	6
USLS (First Lobe), dB	14	16
Front-to-Back Ratio at 180°, dB	32	34
CPR at Boresight, dB	10	10
Isolation, Same Beam, dB	25	25
VSWR Return loss, dB	1.43 15.0	1.43 15.0
PIM, 3rd Order, 2 x 20 W, dBc	-150	-150
Input Power per Port, maximum, watts	300	300

Electrical Specifications, BASTA

Frequency Band, MHz	1710–1920	1920–2180
Gain by all Beam Tilts, average, dBi	20.7	21.3
Gain by all Beam Tilts Tolerance, dB	±2	±1.7
Beamwidth, Horizontal Tolerance, degrees	±2.1	±1.7
Beamwidth, Vertical Tolerance, degrees	±0.7	±0.7
USLS, beampeak to 20° above beampeak, dB	17	18
Front-to-Back Total Power at 180° ± 30°, dB	30	32
CPR at Boresight, dB	9	10

Mechanical Specifications

Wind Loading @ Velocity, frontal	931.0 N @ 150 km/h (209.3 lbf @ 150 km/h)
Wind Speed, maximum	250 km/h (155 mph)

Packaging and Weights

Width, packed	977 mm 38.465 in
Depth, packed	349 mm 13.74 in

5NPX1006F

Length, packed 1038 mm | 40.866 in

Weight, gross 46.5 kg | 102.515 lb

Regulatory Compliance/Certifications

Agency	Classification
CE	Compliant with the relevant CE product directives
CHINA-ROHS	Below maximum concentration value
ISO 9001:2015	Designed, manufactured and/or distributed under this quality management system
REACH-SVHC	Compliant as per SVHC revision on www.commscope.com/ProductCompliance
ROHS	Compliant
UK-ROHS	Compliant



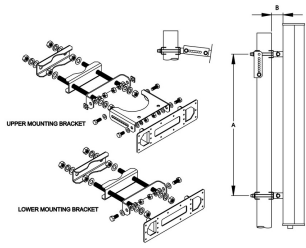
Included Products

- T-045-GL-E – Adjustable Tilt Pipe Mounting Kit for 2.0"-4.5" (60-115mm) OD round members for panel antennas. Includes 2 clamp sets.

* Footnotes

Performance Note Severe environmental conditions may degrade optimum performance

T-045-GL-E



Adjustable Tilt Pipe Mounting Kit for 2.0"-4.5" (60-115mm) OD round members for panel antennas. Includes 2 clamp sets.

Product Classification

Product Type Adjustable tilt mounting kit

General Specifications

Application Outdoor

Color Silver

Dimensions

Compatible Length, maximum 1200 mm | 47.244 in

Compatible Length, minimum 850 mm | 33.465 in

Compatible Diameter, maximum 115 mm | 4.528 in

Compatible Diameter, minimum 60 mm | 2.362 in

Antenna-to-Pipe Distance 85 mm | 3.346 in

Bracket-to-Bracket Distance 761 mm | 29.961 in

Weight, net 6 kg | 13.228 lb

Material Specifications

Material Type Galvanized steel

Mechanical Specifications

Mechanical Tilt 0°-10°

Packaging and Weights

Included Brackets | Hardware

Packaging quantity 1

Regulatory Compliance/Certifications

Agency	Classification
CHINA-ROHS	Below maximum concentration value

T-045-GL-E

ISO 9001:2015	Designed, manufactured and/or distributed under this quality management system
REACH-SVHC	Compliant as per SVHC revision on www.commscope.com/ProductCompliance
ROHS	Compliant
UK-ROHS	Compliant

