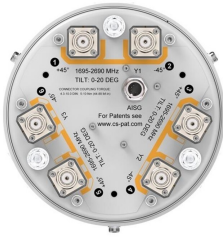


3X-V65S-C3-3XR



6-port small cell antenna, 6x 1695–2690 MHz, 65° HPBW, 3x RET

- Three DualPol® antennas under one radome
- Fully integrated flange mounting system for ease of installation
- Ideal concealment solution for areas with special regulations regarding visual impact
- 4.3-10 connector significantly improves PIM consistency and smaller footprint on antenna bottom

General Specifications

Antenna Type	Small Cell
Band	Single band
Color	Light Gray (RAL 7035)
Grounding Type	RF connector inner conductor and body grounded to reflector and mounting bracket
Performance Note	Outdoor usage
Radome Material	Fiberglass, UV resistant
Reflector Material	Aluminum
RF Connector Interface	4.3-10 Female
RF Connector Location	Bottom
RF Connector Quantity, mid band	6
RF Connector Quantity, total	6

Remote Electrical Tilt (RET) Information

RET Interface	8-pin DIN Male
RET Interface, quantity	1 male
Input Voltage	10–30 Vdc
Internal RET	Mid band (3)
Power Consumption, active state, maximum	13 W
Power Consumption, idle state, maximum	2 W
Protocol	3GPP/AISG 2.0 (Multi-RET)

Dimensions

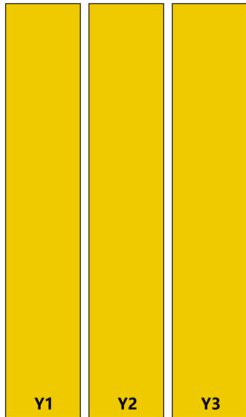
Length	596 mm 23.465 in
Net Weight, antenna only	7.4 kg 16.314 lb

3X-V65S-C3-3XR

Outer Diameter

200 mm | 7.874 in

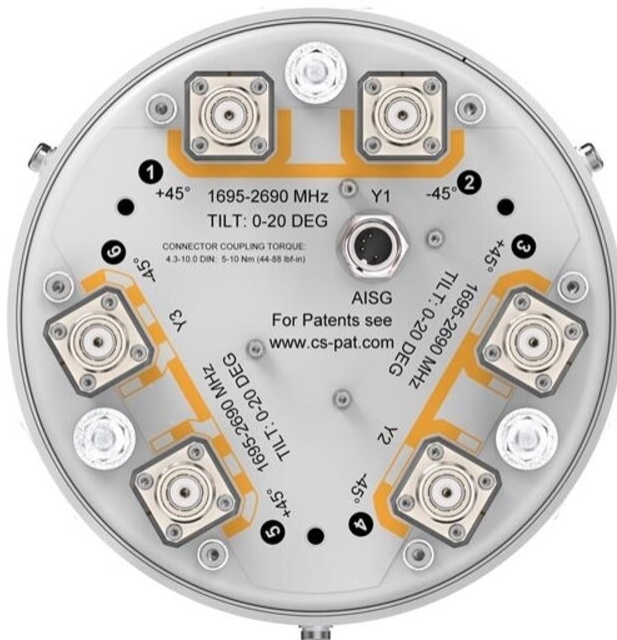
Array Layout



Array ID	Frequency (MHz)	RF Connector	RET (MRET)	AISG No.	RET UID
Y1	1695-2690	1 - 2	1	AISG1	ARxxxxxxxxxxxxx1.1
Y2	1695-2690	3 - 4	2	AISG1	ARxxxxxxxxxxxxx1.2
Y3	1695-2690	5 - 6	3	AISG1	ARxxxxxxxxxxxxx1.3

(Sizes of colored boxes are not true depictions of array sizes)

Port Configuration



Electrical Specifications

Impedance	50 ohm
Operating Frequency Band	1695 – 2690 MHz
Polarization	±45°

3X-V65S-C3-3XR

Total Input Power, maximum 400 W @ 50 °C

Electrical Specifications

	Y1-Y3	Y1-Y3	Y1-Y3	Y1-Y3	Y1-Y3
Frequency Band, MHz	1695–1880	1850–1990	1920–2200	2300–2500	2500–2690
RF Port	1-6	1-6	1-6	1-6	1-6
Gain, dBi	13.3	13.6	13.7	14.3	14.3
Beamwidth, Horizontal, degrees	74	73	72	68	71
Beamwidth, Vertical, degrees	18.7	17.5	16.7	14.6	13.6
Beam Tilt, degrees	0–20	0–20	0–20	0–20	0–20
USLS (First Lobe), dB	15	16	16	16	15
Front-to-Back Ratio at 180°, dB	32	31	30	34	36
Isolation, Cross Polarization, dB	25	25	25	25	25
Isolation, Inter-band, dB	35	35	35	35	35
VSWR Return loss, dB	1.5 14.0	1.5 14.0	1.5 14.0	1.5 14.0	1.5 14.0
PIM, 3rd Order, 2 x 20 W, dBc	-153	-153	-153	-150	-150
Input Power per Port, maximum, watts	300	300	300	250	250

Mechanical Specifications

Wind Loading @ Velocity, frontal	58.0 N @ 150 km/h (13.0 lbf @ 150 km/h)
Wind Loading @ Velocity, lateral	58.0 N @ 150 km/h (13.0 lbf @ 150 km/h)
Wind Loading @ Velocity, rear	58.0 N @ 150 km/h (13.0 lbf @ 150 km/h)
Wind Speed, maximum	241.4 km/h (150 mph)

Packaging and Weights

Width, packed	320 mm 12.598 in
Depth, packed	300 mm 11.811 in
Length, packed	850 mm 33.465 in
Weight, gross	10.2 kg 22.487 lb

Regulatory Compliance/Certifications

Agency	Classification
--------	----------------

3X-V65S-C3-3XR

ISO 9001:2015	Designed, manufactured and/or distributed under this quality management system
UK-ROHS	Compliant

* Footnotes

Performance Note Severe environmental conditions may degrade optimum performance