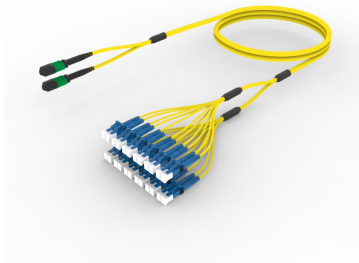


UQGMXLCHF

Base Product



Ultra Low Loss Singlemode MPO12 Pinned to LC/UPC 24-Fiber Plenum Array Cord

Product Classification

| | |
|------------------------------|--|
| Regional Availability | Asia Australia/New Zealand Europe Latin America Middle East /Africa North America |
| Portfolio | CommScope® |
| Product Type | Fiber array cable assembly |
| Product Brand | SYSTIMAX ULL |
| Ordering Note | For additional jacket colors, please contact a CommScope Sales Representative For lengths greater than 999 ft (304 m), orders must be in meters Minimum length may vary based on cable configuration |

General Specifications

| | |
|-------------------------------------|-------------------------|
| Color, boot A | Black |
| Color, connector A | Green |
| Color, boot B | Blue |
| Color, connector B | Blue |
| Construction Type | Stranded |
| Furcation Color | Yellow |
| Interface, Connector A | MPO-12/APC Male |
| Interface, Connector B | LC/UPC |
| Jacket Color | Yellow |
| Polarity | Method B Enhanced (ULL) |
| Fibers per Subunit, quantity | 12 |
| Total Fibers, quantity | 24 |

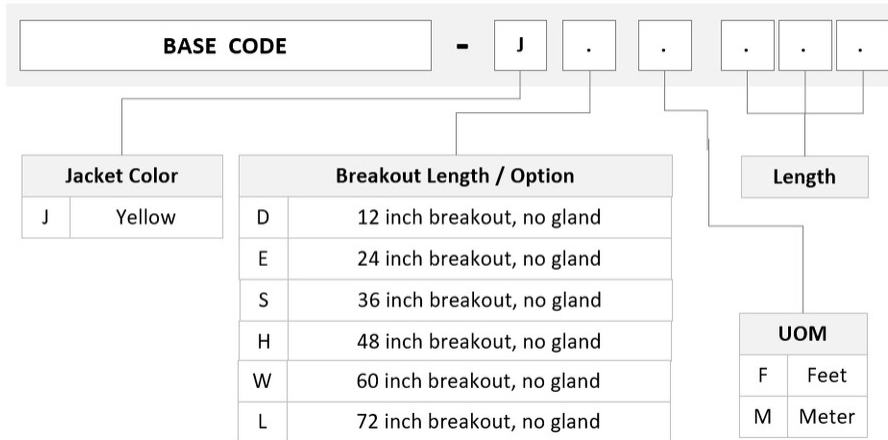
Dimensions

| | |
|------------------------|-------|
| Breakout Length | 33 in |
|------------------------|-------|

UQGMXLCHF

Cable Assembly Length Range (m) 3 – 999
Cable Assembly Length Range (ft) 10 – 999

Ordering Tree



Mechanical Specifications

Cable Retention Strength, maximum 11.24 lb @ 0 ° | 4.40 lb @ 90 °

Optical Specifications

Fiber Mode Singlemode
Fiber Type G.657.A2, TeraSPEED®

Environmental Specifications

Operating Temperature -10 °C to +60 °C (+14 °F to +140 °F)
Environmental Space Indoor | Plenum

Regulatory Compliance/Certifications

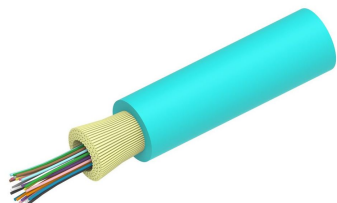
| Agency | Classification |
|---------------|--|
| ANATEL | Compliant |
| ISO 9001:2015 | Designed, manufactured and/or distributed under this quality management system |



UQGMXLCHF

Included Products

- 760238096 – Plenum MPO Light Duty Patchcord Cable, 24 fiber
P-024-MP-8G-F36YL
- 860637435 – LC/UPC Connector, Singlemode, Blue, Short Boot
- 860638317 – MPO12, ULTRA LOW LOSS, MALE, Singlemode, GREEN,
3mm



Plenum MPO Light Duty Patchcord Cable, 24 fiber

Product Classification

Regional Availability

Asia | Australia/New Zealand | Latin America | Middle East/Africa | North America

Portfolio

CommScope®

Product Type

Fiber indoor cable

Product Series

P-MP

General Specifications

Cable Type

MPO trunk cable

Construction Type

Non-armored

Subunit Type

Gel-free

Jacket Color

Yellow

Jacket Marking

Feet

Total Fiber Count

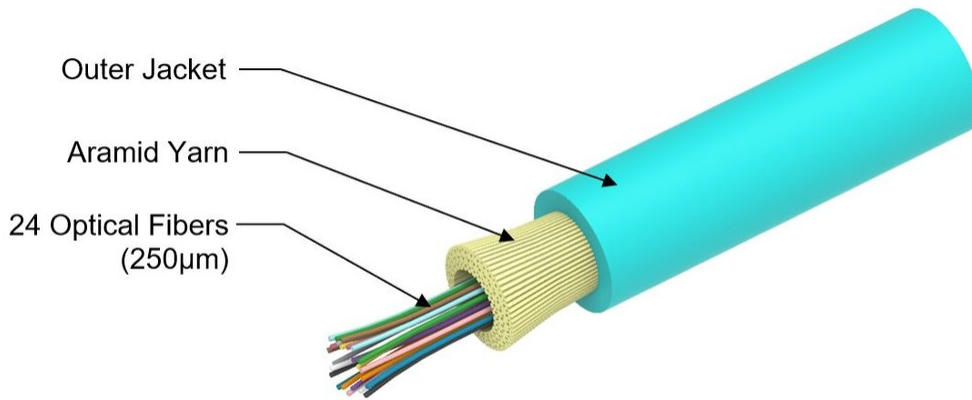
24

Dimensions

Diameter Over Jacket

3.6 mm | 0.142 in

Representative Image



Mechanical Specifications

| | |
|--|---------------------------------------|
| Minimum Bend Radius, loaded | 54 mm 2.126 in |
| Minimum Bend Radius, unloaded | 29 mm 1.142 in |
| Tensile Load, long term, maximum | 120 N 26.977 lbf |
| Tensile Load, short term, maximum | 400 N 89.924 lbf |
| Compression | 4 N/mm 22.841 lb/in |
| Compression Test Method | FOTP-41 IEC 60794-1 E3 |
| Flex | 300 cycles |
| Flex Test Method | FOTP-104 IEC 60794-1 E6 |
| Impact | 0.74 N-m 6.55 in lb |
| Impact Test Method | FOTP-25 IEC 60794-1 E4 |
| Strain | See long and short term tensile loads |
| Strain Test Method | FOTP-33 IEC 60794-1 E1 |
| Twist | 10 cycles |
| Twist Test Method | FOTP-85 IEC 60794-1 E7 |
| Vertical Rise, maximum | 500 m 1,640.42 ft |

Optical Specifications

| | |
|-------------------|---------------------------|
| Fiber Type | G.657.A2/B2 G.657.A2/B2 |
|-------------------|---------------------------|

Environmental Specifications

| | |
|---------------------------------|------------------------------------|
| Installation temperature | 0 °C to +70 °C (+32 °F to +158 °F) |
| Operating Temperature | 0 °C to +70 °C (+32 °F to +158 °F) |

760238096 | P-024-MP-8G-F36YL

| | |
|--------------------------------------|---------------------------------------|
| Storage Temperature | -40 °C to +70 °C (-40 °F to +158 °F) |
| Cable Qualification Standards | ANSI/ICEA S-83-596 Telcordia GR-409 |
| Environmental Space | Plenum |
| Flame Test Listing | NEC OFNP (ETL) and c(ETL) |
| Flame Test Method | NFPA 130 NFPA 262 |

Environmental Test Specifications

| | |
|--------------------------------------|------------------------------------|
| Heat Age | 0 °C to +85 °C (+32 °F to +185 °F) |
| Heat Age Test Method | IEC 60794-1 F9 |
| Low High Bend | 0 °C to +70 °C (+32 °F to +158 °F) |
| Low High Bend Test Method | FOTP-37 IEC 60794-1 E11 |
| Temperature Cycle | 0 °C to +70 °C (+32 °F to +158 °F) |
| Temperature Cycle Test Method | FOTP-3 IEC 60794-1 F1 |

Packaging and Weights

| | |
|---------------------|-------------------------|
| Cable weight | 12 kg/km 8.064 lb/kft |
|---------------------|-------------------------|

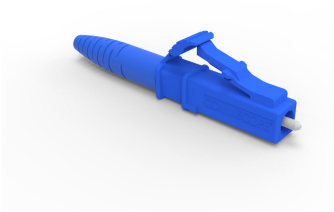
Regulatory Compliance/Certifications

| Agency | Classification |
|---------------|--|
| CHINA-ROHS | Below maximum concentration value |
| ISO 9001:2015 | Designed, manufactured and/or distributed under this quality management system |
| REACH-SVHC | Compliant as per SVHC revision on www.commscope.com/ProductCompliance |
| ROHS | Compliant |
| UK-ROHS | Compliant |



* Footnotes

Operating Temperature Specification applicable to non-terminated bulk fiber cable



LC/UPC Connector, Singlemode, Blue, Short Boot

Product Classification

| | |
|------------------------------|---|
| Regional Availability | Asia Australia/New Zealand EMEA Latin America North America |
| Portfolio | CommScope® |
| Product Type | Fiber connector |

General Specifications

| | |
|-----------------------|--------|
| Color, boot | Blue |
| Color, housing | Blue |
| Interface | LC/UPC |

Dimensions

| | |
|---------------|--------------------|
| Length | 41.6 mm 1.638 in |
|---------------|--------------------|

Material Specifications

| | |
|-------------------------|----------|
| Ferrule Material | Zirconia |
|-------------------------|----------|

Mechanical Specifications

| | |
|--|----------------|
| Cable Retention Strength, maximum | 11.24 lb @ 0 ° |
|--|----------------|

Optical Specifications

| | |
|---|---------------------------------|
| Fiber Mode | Singlemode |
| Insertion Loss Change, mating | 0.2 dB |
| Optical Components Standard | ANSI/TIA-568. 3-D IEC 61753-1 |
| Insertion Loss Change, temperature | 0.3 dB |
| Insertion Loss, maximum | 0.25 dB |
| Return Loss, minimum | 55 dB |

Regulatory Compliance/Certifications

860637435

Agency

CHINA-ROHS

ROHS

UK-ROHS

**Classification**

Below maximum concentration value

Compliant

Compliant

* Footnotes

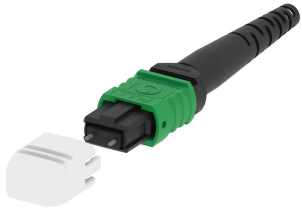
Insertion Loss Change, mating

TIA-568: Maximum insertion loss change after 500 matings

Insertion Loss Change, temperature

Maximum insertion loss change from -10 °C to +60 °C (+14 °F to +140 °F)

860638317



MPO12, ULTRA LOW LOSS, MALE, Singlemode, GREEN, 3mm

Product Classification

| | |
|------------------------------|---|
| Regional Availability | Asia Australia/New Zealand EMEA Latin America North America |
| Portfolio | CommScope® |
| Product Type | Fiber connector |
| Product Brand | TeraSPEED® |

General Specifications

| | |
|--------------------------|--------------|
| Color | Green |
| Color, boot | Black |
| Ferrule Geometry | Angled |
| Interface | MPO/APC Male |
| Interface Feature | Pinned |
| Total Fiber Count | 12 |

Dimensions

| | |
|----------------------------------|--------------------|
| Length | 60.1 mm 2.366 in |
| Compatible Cable Diameter | 3 mm 0.118 in |

Material Specifications

| | |
|-------------------------|---------|
| Ferrule Material | Polymer |
|-------------------------|---------|

Mechanical Specifications

| | |
|--|----------------|
| Cable Retention Strength, maximum | 11.24 lb @ 0 ° |
| Mechanical Components Standard | IEC 61754-7 |

Optical Specifications

| | |
|--------------------------------------|--|
| Fiber Mode | Singlemode |
| Fiber Type | G.652.D and G.657.A1, TeraSPEED® OS2 |
| Insertion Loss Change, mating | 0.3 dB |

860638317

| | |
|---|------------------|
| Optical Components Standard | ANSI/TIA-568-C.3 |
| Insertion Loss Change, temperature | 0.3 dB |
| Insertion Loss, maximum | 0.35 dB |
| Return Loss, minimum | 65 dB |

Packaging and Weights

| | |
|---------------------------|---|
| Packaging quantity | 1 |
|---------------------------|---|

Regulatory Compliance/Certifications

| Agency | Classification |
|---------------|--|
| CHINA-ROHS | Below maximum concentration value |
| ISO 9001:2015 | Designed, manufactured and/or distributed under this quality management system |
| REACH-SVHC | Compliant as per SVHC revision on www.commscope.com/ProductCompliance |
| ROHS | Compliant |
| UK-ROHS | Compliant |



* Footnotes

| | |
|---|---|
| Insertion Loss Change, mating | TIA-568: Maximum insertion loss change after 500 matings |
| Insertion Loss Change, temperature | Maximum insertion loss change from -10 °C to +60 °C (+14 °F to +140 °F) |