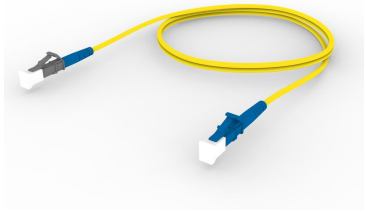


FDWL6LC21

Base Product



Singlemode LC/UPC Keyed Slate to LC/UPC Fiber Patch Cord, 1.6 mm Simplex, Plenum

Product Classification

Regional Availability	Asia Australia/New Zealand Europe Latin America Middle East /Africa North America
Portfolio	CommScope®
Product Type	Fiber patch cord, simplex
Product Brand	SYSTIMAX InstaPATCH® 360
Product Series	FDW
Ordering Note	For lengths greater than 999 ft (304 m), orders must be in meters Minimum length may vary based on cable configuration

General Specifications

Connector A, quantity	1
Color, boot A	Blue
Color, connector A	Slate
Connector B, quantity	1
Color, boot B	Blue
Color, connector B	Blue
Interface, Connector A	LC/UPC
Interface Feature, connector A	Keyed
Interface, Connector B	LC/UPC
Jacket Color	Yellow
Polarity	Method B
Total Fibers, quantity	1

Dimensions

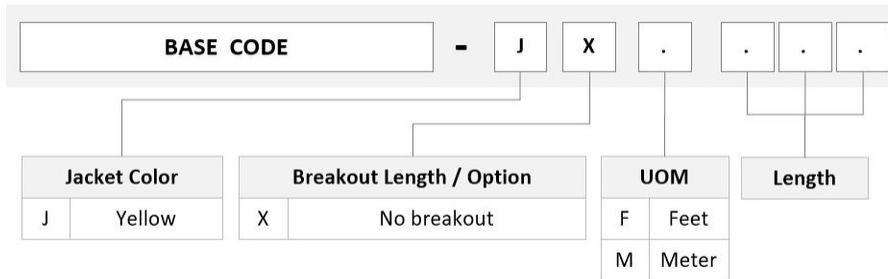
Cable Assembly Length Range (m)	1 – 999
Cable Assembly Length Range (ft)	1 – 999

FDWL6LC21

Diameter Over Jacket

1.6 mm | 0.063 in

Ordering Tree



Mechanical Specifications

Cable Retention Strength, maximum

11.24 lb @ 0 ° | 4.40 lb @ 90 °

Optical Specifications

Fiber Mode

Singlemode

Fiber Type

G.652.D | G.657.A1, TeraSPEED®

Environmental Specifications

Operating Temperature

-10 °C to +60 °C (+14 °F to +140 °F)

Environmental Space

Plenum

Regulatory Compliance/Certifications

Agency

ISO 9001:2015

Classification

Designed, manufactured and/or distributed under this quality management system

Included Products

760102723

SFC-LCR-16-KSL

860637435

P-001-SP-8W-F16

- TeraSPEED® Pre-Radiused Keyed LC Connector for 1.6 mm Fiber, simplex Singlemode, slate
- LC/UPC Connector, Singlemode, Blue, Short Boot
- Fiber indoor cable, TeraSPEED® 1.6mm Plenum Simplex, 1 fiber, Singlemode G.652.D and G.657.A1, Feet jacket marking

760102723 | SFC-LCR-16-KSL



TeraSPEED® Pre-Radiused Keyed LC Connector for 1.6 mm Fiber, simplex Singlemode, slate

Product Classification

Regional Availability	Asia Australia/New Zealand EMEA Latin America North America
Portfolio	CommScope®
Product Type	Fiber connector
Product Brand	TeraSPEED®

General Specifications

Body Style	Simplex
Color	Slate
Ferrule Geometry	Pre-radiused
Interface	LC/UPC
Interface Feature	Keyed

Dimensions

Length	52 mm 2.047 in
Compatible Cable Diameter	1.6 mm 0.063 in

Material Specifications

Ferrule Material	Zirconia
-------------------------	----------

Mechanical Specifications

Cable Retention Strength, maximum	11.24 lb @ 0 °
--	----------------

Optical Specifications

Fiber Type	G.652.D and G.657.A1, TeraSPEED® OS2
Insertion Loss Change, mating	0.3 dB
Optical Components Standard	ANSI/TIA-568-C.3
Insertion Loss Change, temperature	0.3 dB
Insertion Loss, typical	0.2 dB
Return Loss, minimum	50 dB

Packaging and Weights

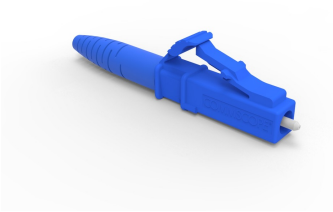
Packaging quantity 1

Regulatory Compliance/Certifications

Agency	Classification
ISO 9001:2015	Designed, manufactured and/or distributed under this quality management system

* Footnotes

- Insertion Loss Change, mating** TIA-568: Maximum insertion loss change after 500 matings
- Insertion Loss Change, temperature** Maximum insertion loss change from -10 °C to +60 °C (+14 °F to +140 °F)



LC/UPC Connector, Singlemode, Blue, Short Boot

Product Classification

Regional Availability	Asia Australia/New Zealand EMEA Latin America North America
Portfolio	CommScope®
Product Type	Fiber connector

General Specifications

Color, boot	Blue
Color, housing	Blue
Interface	LC/UPC

Dimensions

Length	41.6 mm 1.638 in
---------------	--------------------

Material Specifications

Ferrule Material	Zirconia
-------------------------	----------

Mechanical Specifications

Cable Retention Strength, maximum	11.24 lb @ 0 °
--	----------------

Optical Specifications

Fiber Mode	Singlemode
Insertion Loss Change, mating	0.2 dB
Optical Components Standard	ANSI/TIA-568. 3-D IEC 61753-1
Insertion Loss Change, temperature	0.3 dB
Insertion Loss, maximum	0.25 dB
Return Loss, minimum	55 dB

Regulatory Compliance/Certifications

860637435

Agency

CHINA-ROHS

ROHS

UK-ROHS

**Classification**

Below maximum concentration value

Compliant

Compliant

* Footnotes

Insertion Loss Change, mating TIA-568: Maximum insertion loss change after 500 matings

Insertion Loss Change, temperature Maximum insertion loss change from -10 °C to +60 °C (+14 °F to +140 °F)

P-001-SP-8W-F16

Fiber indoor cable, TeraSPEED® 1.6mm Plenum Simplex, 1 fiber, Singlemode G.652.D and G.657.
A1, Feet jacket marking

Product Classification

Regional Availability	Asia Australia/New Zealand Latin America Middle East/Africa North America
Portfolio	CommScope®
Product Type	Fiber indoor cable
Product Series	P-SP

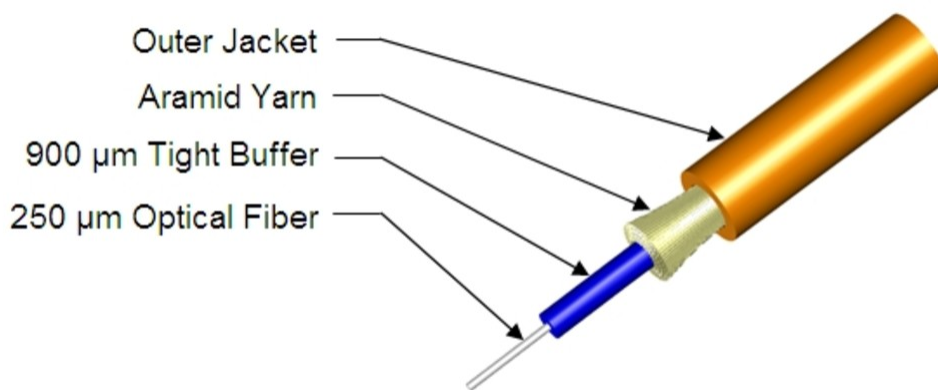
General Specifications

Cable Type	Cordage
Construction Type	Non-armored
Subunit Type	Gel-free
Jacket Marking	Feet
Total Fiber Count	1

Dimensions

Diameter Over Jacket	1.7 mm 0.067 in
-----------------------------	-------------------

Representative Image



Mechanical Specifications

P-001-SP-8W-F16

Minimum Bend Radius, loaded	38 mm 1.496 in
Minimum Bend Radius, unloaded	15 mm 0.591 in
Tensile Load, long term, maximum	29 N 6.519 lbf
Tensile Load, short term, maximum	7 N 1.574 lbf
Compression	10 N/mm 57.101 lb/in
Compression Test Method	FOTP-41 IEC 60794-1 E3
Flex	300 cycles
Flex Test Method	FOTP-104 IEC 60794-1 E6
Impact	0.74 N-m 6.55 in lb
Impact Test Method	FOTP-25 IEC 60794-1 E4
Strain	See long and short term tensile loads
Strain Test Method	FOTP-33 IEC 60794-1 E1
Twist	10 cycles
Twist Test Method	FOTP-85 IEC 60794-1 E7
Vertical Rise, maximum	500 m 1,640.42 ft

Optical Specifications

Fiber Type	G.652.D and G.657.A1, TeraSPEED®
-------------------	----------------------------------

Environmental Specifications

Installation temperature	0 °C to +70 °C (+32 °F to +158 °F)
Operating Temperature	-20 °C to +70 °C (-4 °F to +158 °F)
Storage Temperature	-40 °C to +70 °C (-40 °F to +158 °F)
Cable Qualification Standards	ANSI/ICEA S-83-596 Telcordia GR-409
Environmental Space	Plenum
Flame Test Listing	NEC OFNP (ETL) and c(ETL)
Flame Test Method	NFPA 262

Environmental Test Specifications

Heat Age	-20 °C to +85 °C (-4 °F to +185 °F)
Heat Age Test Method	IEC 60794-1 F9
Low High Bend	-20 °C to +70 °C (-4 °F to +158 °F)
Low High Bend Test Method	FOTP-37 IEC 60794-1 E11

P-001-SP-8W-F16

Temperature Cycle -20 °C to +70 °C (-4 °F to +158 °F)

Temperature Cycle Test Method FOTP-3 | IEC 60794-1 F1

Packaging and Weights

Cable weight 3 kg/km | 2.016 lb/kft

Regulatory Compliance/Certifications

Agency

ISO 9001:2015

Classification

Designed, manufactured and/or distributed under this quality management system

* Footnotes

Operating Temperature Specification applicable to non-terminated bulk fiber cable