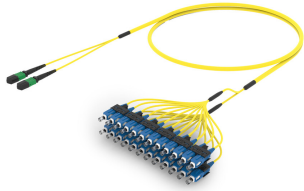


ULGMPSCCF

Base Product



Ultra Low Loss ULL TeraSPEED® MPO(Unpinned) to SC/UPC Ruggedized fanout Cable, 24-Fiber, Plenum, 12 fiber PmP 2.0 mm Dca

Product Classification

| | |
|------------------------------|--|
| Regional Availability | Asia Australia/New Zealand Europe Latin America Middle East/Africa North America |
| Portfolio | CommScope® |
| Product Type | Ruggedized fanout |
| Product Brand | SYSTIMAX ULL |
| Ordering Note | For additional jacket colors, please contact a CommScope Sales Representative For lengths greater than 999 ft (304 m), orders must be in meters Minimum length may vary based on cable configuration |

General Specifications

| | |
|---------------------------------------|-------------------------|
| Color, boot A | Black |
| Color, connector A | Green |
| Color, boot B | Blue |
| Color, connector B | Blue |
| Construction Type | Stranded |
| Furcation Color | Yellow |
| Interface, Connector A | MPO-12/APC Female |
| Interface, Connector B | SC/UPC |
| Interface Feature, connector B | ULL |
| Jacket Color | Yellow |
| Polarity | Method B Enhanced (ULL) |
| Fibers per Subunit, quantity | 12 |
| Total Fibers, quantity | 24 |

Dimensions

| | |
|---|----------|
| Cable Assembly Length Range (m) | 3 – 999 |
| Cable Assembly Length Range (ft) | 10 – 999 |

ULGMPSCCF

Ordering Tree



Optical Specifications

| | |
|-------------------|----------------------|
| Fiber Mode | Singlemode |
| Fiber Type | G.657.A2, TeraSPEED® |

Environmental Specifications

| | |
|---|--------------------------------------|
| Operating Temperature | -10 °C to +60 °C (+14 °F to +140 °F) |
| EN50575 CPR Cable EuroClass Fire Performance | Dca |
| Environmental Space | Indoor Plenum |

Regulatory Compliance/Certifications

| Agency | Classification |
|------------|-----------------------------------|
| ANATEL | Compliant |
| CHINA-ROHS | Below maximum concentration value |

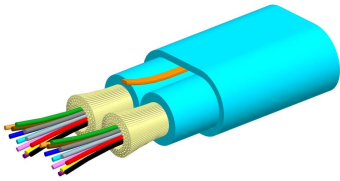
ULGMPSCCF

| | |
|---------------|--|
| ISO 9001:2015 | Designed, manufactured and/or distributed under this quality management system |
| REACH-SVHC | Compliant as per SVHC revision on www.commscope.com/ProductCompliance |
| ROHS | Compliant |
| UK-ROHS | Compliant |



Included Products

| | | |
|-----------------------|---|---|
| 760242051 | - | Fiber indoor cable, Plenum for MPO Trunks, 24 fiber with 12 fiber subunits, Singlemode G.657. |
| P-024-MP-8G-F12YL/20T | - | A2/B2, Feet jacket marking, Yellow jacket color |
| 860655893 | - | SC/UPC Connector, Singlemode, Blue A2 |
| 860659016 | - | MPO12, ULL, FEMALE, SM, GREEN, 2MM |



Fiber indoor cable, Plenum for MPO Trunks, 24 fiber with 12 fiber subunits, Singlemode G.657.A2/B2, Feet jacket marking, Yellow jacket color

Product Classification

| | |
|------------------------------|--|
| Regional Availability | Asia Australia/New Zealand Latin America Middle East /Africa North America |
| Portfolio | CommScope® |
| Product Type | Fiber indoor cable |
| Product Series | P-MP |

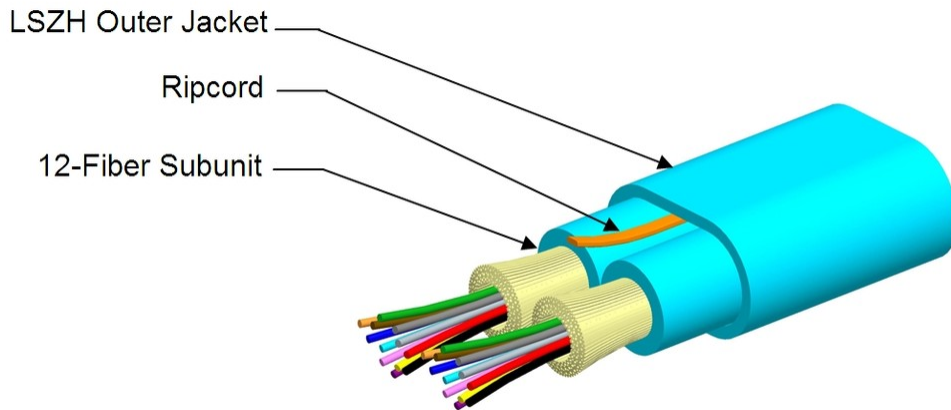
General Specifications

| | |
|-------------------------------------|-----------------|
| Cable Type | MPO trunk cable |
| Construction Type | Non-armored |
| Subunit Type | Gel-free |
| Jacket Color | Yellow |
| Jacket Marking | Feet |
| Subunit, quantity | 2 |
| Fibers per Subunit, quantity | 12 |
| Total Fiber Count | 24 |

Dimensions

| | |
|-------------------------------------|--------------------|
| Height Over Jacket | 5.4 mm 0.213 in |
| Width Over Jacket | 7.15 mm 0.281 in |
| Buffer Tube/Subunit Diameter | 2 mm 0.079 in |

Representative Image



Mechanical Specifications

| | |
|--|---------------------------------------|
| Minimum Bend Radius, loaded | 81 mm 3.189 in |
| Minimum Bend Radius, unloaded | 54 mm 2.126 in |
| Tensile Load, long term, maximum | 200 N 44.962 lbf |
| Tensile Load, short term, maximum | 667 N 149.948 lbf |
| Compression | 10 N/mm 57.101 lb/in |
| Compression Test Method | FOTP-41 IEC 60794-1 E3 |
| Flex | 300 cycles |
| Flex Test Method | FOTP-104 IEC 60794-1 E6 |
| Impact | 0.74 N-m 6.55 in lb |
| Impact Test Method | FOTP-25 IEC 60794-1 E4 |
| Strain | See long and short term tensile loads |
| Strain Test Method | FOTP-33 IEC 60794-1 E1 |
| Twist | 10 cycles |
| Twist Test Method | FOTP-85 IEC 60794-1 E7 |
| Vertical Rise, maximum | 440 m 1,443.57 ft |

Optical Specifications

| | |
|-------------------|---------------------------|
| Fiber Type | G.657.A2/B2 G.657.A2/B2 |
|-------------------|---------------------------|

Environmental Specifications

| | |
|---------------------------------|------------------------------------|
| Installation temperature | 0 °C to +70 °C (+32 °F to +158 °F) |
|---------------------------------|------------------------------------|

760242051 | P-024-MP-8G-F12YL/20T

| | |
|--------------------------------------|---------------------------------------|
| Operating Temperature | 0 °C to +70 °C (+32 °F to +158 °F) |
| Storage Temperature | -40 °C to +70 °C (-40 °F to +158 °F) |
| Cable Qualification Standards | ANSI/ICEA S-83-596 Telcordia GR-409 |
| Environmental Space | Plenum |
| Flame Test Listing | NEC OFNP (ETL) and c(ETL) |
| Flame Test Method | NFPA 130 NFPA 262 |

Environmental Test Specifications

| | |
|--------------------------------------|------------------------------------|
| Heat Age | 0 °C to +85 °C (+32 °F to +185 °F) |
| Heat Age Test Method | IEC 60794-1 F9 |
| Low High Bend | 0 °C to +70 °C (+32 °F to +158 °F) |
| Low High Bend Test Method | FOTP-37 IEC 60794-1 E11 |
| Temperature Cycle | 0 °C to +70 °C (+32 °F to +158 °F) |
| Temperature Cycle Test Method | FOTP-3 IEC 60794-1 F1 |

Packaging and Weights

| | |
|---------------------|----------------------------|
| Cable weight | 46.4 kg/km 31.179 lb/kft |
|---------------------|----------------------------|

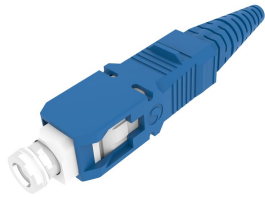
Regulatory Compliance/Certifications

| Agency | Classification |
|---------------|--|
| ISO 9001:2015 | Designed, manufactured and/or distributed under this quality management system |

* Footnotes

Operating Temperature Specification applicable to non-terminated bulk fiber cable

860655893



SC/UPC Connector, Singlemode, Blue A2

Product Classification

| | |
|------------------------------|---|
| Regional Availability | Asia Australia/New Zealand EMEA Latin America North America |
| Portfolio | CommScope® |
| Product Type | Fiber connector |

General Specifications

| | |
|-----------------------|--------|
| Color, boot | Blue |
| Color, housing | Blue |
| Interface | SC/UPC |

Dimensions

| | |
|----------------------------------|-------------------------------------|
| Length | 48 mm 1.89 in |
| Compatible Cable Diameter | 1.6 mm 0.063 in 2 mm 0.079 in |

Material Specifications

| | |
|-------------------------|----------|
| Ferrule Material | Zirconia |
|-------------------------|----------|

Mechanical Specifications

| | |
|--|----------------|
| Cable Retention Strength, maximum | 15.73 lb @ 0 ° |
|--|----------------|

Optical Specifications

| | |
|---|--------------------------------|
| Fiber Mode | Singlemode |
| Fiber Type | G.657.A2 |
| Insertion Loss Change, mating | 0.2 dB |
| Optical Components Standard | ANSI/TIA-568.3-D IEC 61753-1 |
| Insertion Loss Change, temperature | 0.2 dB |
| Insertion Loss, maximum | 0.34 dB |
| Return Loss, minimum | 50 dB |

Regulatory Compliance/Certifications

| Agency | Classification |
|------------|--|
| CHINA-ROHS | Above maximum concentration value |
| REACH-SVHC | Compliant as per SVHC revision on www.commscope.com/ProductCompliance |
| ROHS | Compliant/Exempted |
| UK-ROHS | Compliant/Exempted |



* Footnotes

Insertion Loss Change, mating TIA-568: Maximum insertion loss change after 500 matings

Insertion Loss Change, temperature Maximum insertion loss change from -10 °C to +60 °C (+14 °F to +140 °F)

860659016



MPO12, ULL, FEMALE, SM, GREEN, 2MM

Product Classification

| | |
|------------------------------|---|
| Regional Availability | Asia Australia/New Zealand EMEA Latin America North America |
| Portfolio | CommScope® |
| Product Type | Fiber connector |
| Product Brand | TeraSPEED® |

General Specifications

| | |
|--------------------------|----------------|
| Color | Green |
| Color, boot | Black |
| Ferrule Geometry | Angled |
| Interface | MPO/APC Female |
| Interface Feature | Unpinned |
| Total Fiber Count | 12 |

Dimensions

| | |
|----------------------------------|--------------------|
| Length | 60.1 mm 2.366 in |
| Compatible Cable Diameter | 2 mm 0.079 in |

Material Specifications

| | |
|-------------------------|---------|
| Ferrule Material | Polymer |
|-------------------------|---------|

Mechanical Specifications

| | |
|--|----------------|
| Cable Retention Strength, maximum | 11.24 lb @ 0 ° |
|--|----------------|

Optical Specifications

| | |
|--------------------------------------|--|
| Fiber Mode | Singlemode |
| Fiber Type | G.652.D and G.657.A1, TeraSPEED® OS2 |
| Insertion Loss Change, mating | 0.35 dB |
| Optical Components Standard | ANSI/TIA-568-C.3 |

860659016

Insertion Loss, maximum 0.35 dB

Return Loss, minimum 65 dB

Packaging and Weights

Packaging quantity 1

* Footnotes

Insertion Loss Change, mating TIA-568: Maximum insertion loss change after 500 matings