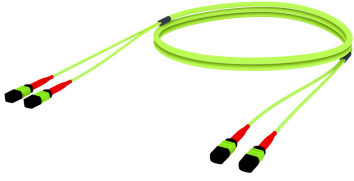


UGV2P2XBH

Base Product



Ultra Low Loss (ULL) OM5 MPO24 (Unpinned) to MPO24 (Pinned), Fiber Trunk Cable Assembly, 48-Fiber, Plenum

Product Classification

| | |
|------------------------------|--|
| Regional Availability | Asia Australia/New Zealand China Europe India Latin America Middle East/Africa North America |
| Portfolio | CommScope® |
| Product Type | Fiber trunk cable assembly |
| Product Brand | SYSTIMAX ULL |
| Ordering Note | For additional jacket colors, please contact a CommScope Sales Representative For lengths greater than 999 ft (304 m), orders must be in meters Minimum length may vary based on cable configuration |

General Specifications

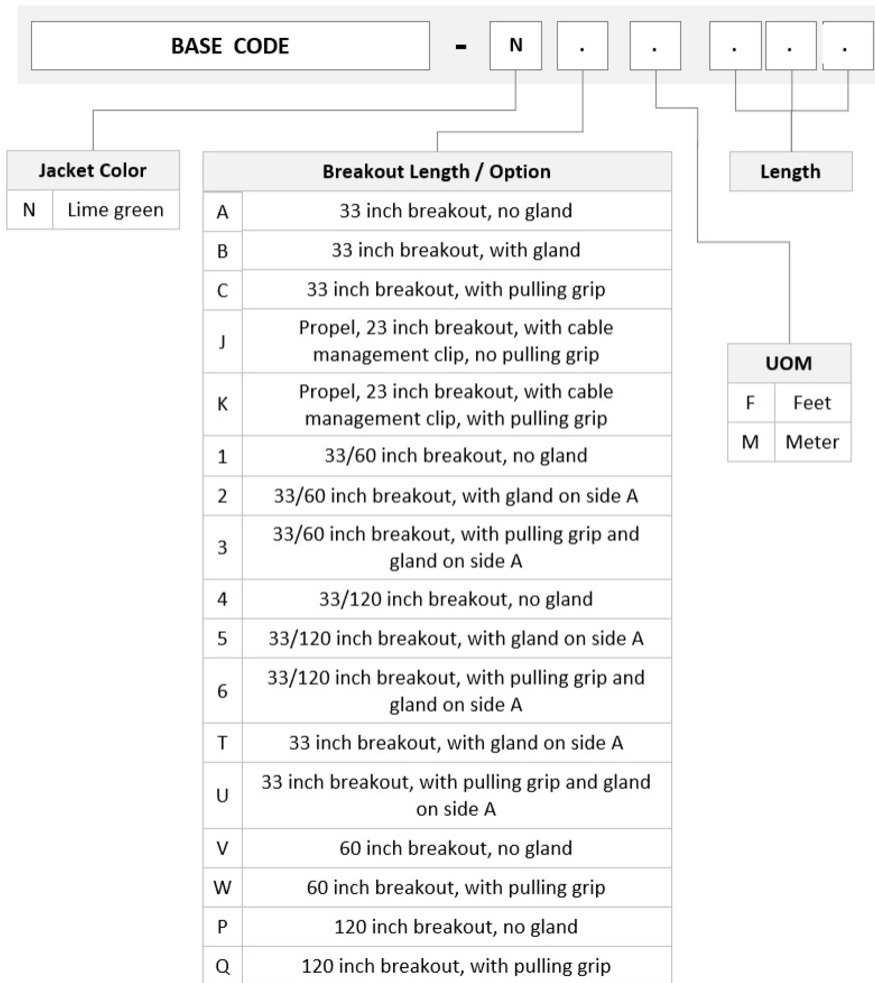
| | |
|-------------------------------------|-------------------------|
| Color, boot A | Red |
| Color, connector A | Lime green |
| Color, boot B | Red |
| Color, connector B | Lime green |
| Construction Type | Stranded |
| Furcation Color | Lime green |
| Interface, Connector A | MPO-24/UPC Female |
| Interface, Connector B | MPO-24/UPC Male |
| Jacket Color | Lime green |
| Polarity | Method B Enhanced (ULL) |
| Fibers per Subunit, quantity | 24 |
| Total Fibers, quantity | 48 |

Dimensions

| | |
|---|----------|
| Breakout Length | 33 in |
| Cable Assembly Length Range (m) | 3 – 999 |
| Cable Assembly Length Range (ft) | 10 – 999 |

UGV2P2XBH

Ordering Tree



Mechanical Specifications

Cable Retention Strength, maximum 11.24 lb @ 0 ° | 4.40 lb @ 90 °

Optical Specifications

Fiber Mode Multimode

Fiber Type OM5, LazrSPEED®

Environmental Specifications

Operating Temperature -10 °C to +60 °C (+14 °F to +140 °F)

Environmental Space Indoor | Plenum

UGV2P2XBH

Regulatory Compliance/Certifications

Agency

ISO 9001:2015

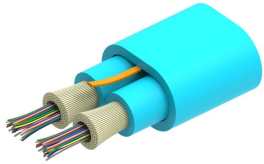
Classification

Designed, manufactured and/or distributed under this quality management system

Included Products

- | | | |
|--------------------------------|---|--|
| 760235977 P-048-MP-5G-F24LM | - | Fiber indoor cable, LazrSPEED® Plenum for MPO Trunks, 48 fiber with 24 fiber subunits, Multimode OM5, Feet jacket marking, Lime green jacket color |
| 860634624 | - | LazrSPEED® Elite MPO Female 24 Fiber Connector, lime green |
| 860634625 | - | LazrSPEED® Elite MPO Male 24 Fiber Connector, lime green |

760235977 | P-048-MP-5G-F24LM



Fiber indoor cable, LazrSPEED® Plenum for MPO Trunks, 48 fiber with 24 fiber subunits, Multimode OM5, Feet jacket marking, Lime green jacket color

Product Classification

| | |
|------------------------------|--|
| Regional Availability | Asia Australia/New Zealand Latin America Middle East /Africa North America |
| Portfolio | CommScope® |
| Product Type | Fiber indoor cable |
| Product Series | P-MP |

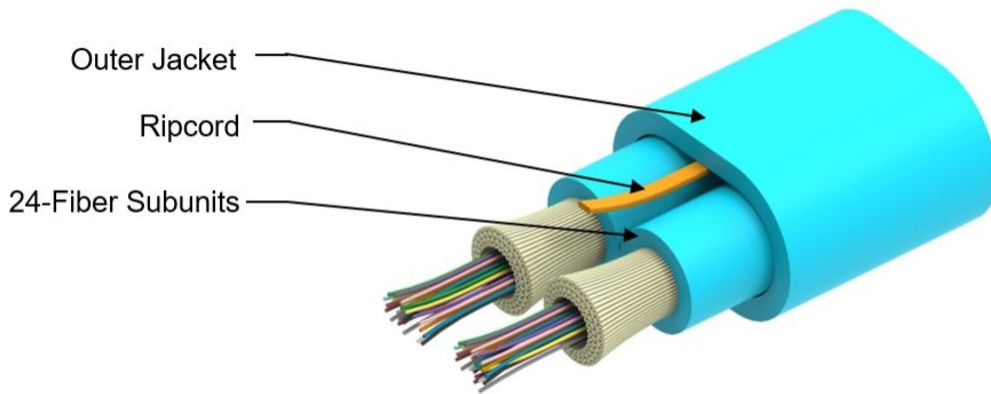
General Specifications

| | |
|-------------------------------------|-----------------|
| Cable Type | MPO trunk cable |
| Construction Type | Non-armored |
| Subunit Type | Gel-free |
| Jacket Color | Lime green |
| Jacket Marking | Feet |
| Subunit, quantity | 2 |
| Fibers per Subunit, quantity | 24 |
| Total Fiber Count | 48 |

Dimensions

| | |
|-------------------------------------|--------------------|
| Height Over Jacket | 4.47 mm 0.176 in |
| Width Over Jacket | 8.08 mm 0.318 in |
| Buffer Tube/Subunit Diameter | 3.6 mm 0.142 in |

Representative Image



Mechanical Specifications

| | |
|--|---------------------------------------|
| Minimum Bend Radius, loaded | 67 mm 2.638 in |
| Minimum Bend Radius, unloaded | 45 mm 1.772 in |
| Tensile Load, long term, maximum | 240 N 53.954 lbf |
| Tensile Load, short term, maximum | 801 N 180.072 lbf |
| Compression | 10 N/mm 57.101 lb/in |
| Compression Test Method | FOTP-41 IEC 60794-1 E3 |
| Flex | 300 cycles |
| Flex Test Method | FOTP-104 IEC 60794-1 E6 |
| Impact | 0.74 N-m 6.55 in lb |
| Impact Test Method | FOTP-25 IEC 60794-1 E4 |
| Strain | See long and short term tensile loads |
| Strain Test Method | FOTP-33 IEC 60794-1 E1 |
| Twist | 10 cycles |
| Twist Test Method | FOTP-85 IEC 60794-1 E7 |
| Vertical Rise, maximum | 500 m 1,640.42 ft |

Optical Specifications

| | |
|-------------------|---|
| Fiber Type | OM5, LazrSPEED® wideband OM5, LazrSPEED® wideband |
|-------------------|---|

Environmental Specifications

| | |
|---------------------------------|------------------------------------|
| Installation temperature | 0 °C to +70 °C (+32 °F to +158 °F) |
| Operating Temperature | 0 °C to +70 °C (+32 °F to +158 °F) |

760235977 | P-048-MP-5G-F24LM

| | |
|--------------------------------------|---------------------------------------|
| Storage Temperature | -40 °C to +70 °C (-40 °F to +158 °F) |
| Cable Qualification Standards | ANSI/ICEA S-83-596 Telcordia GR-409 |
| Environmental Space | Plenum |
| Flame Test Listing | NEC OFNP (ETL) and c(ETL) |
| Flame Test Method | NFPA 130 NFPA 262 |

Environmental Test Specifications

| | |
|--------------------------------------|------------------------------------|
| Heat Age | 0 °C to +85 °C (+32 °F to +185 °F) |
| Heat Age Test Method | IEC 60794-1 F9 |
| Low High Bend | 0 °C to +70 °C (+32 °F to +158 °F) |
| Low High Bend Test Method | FOTP-37 IEC 60794-1 E11 |
| Temperature Cycle | 0 °C to +70 °C (+32 °F to +158 °F) |
| Temperature Cycle Test Method | FOTP-3 IEC 60794-1 F1 |

Packaging and Weights

| | |
|---------------------|--------------------------|
| Cable weight | 38 kg/km 25.535 lb/kft |
|---------------------|--------------------------|

Regulatory Compliance/Certifications

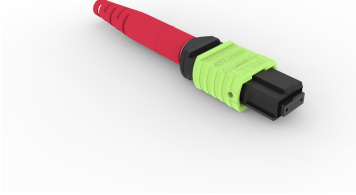
| Agency | Classification |
|---------------|--|
| CHINA-ROHS | Below maximum concentration value |
| ISO 9001:2015 | Designed, manufactured and/or distributed under this quality management system |
| REACH-SVHC | Compliant as per SVHC revision on www.commscope.com/ProductCompliance |
| ROHS | Compliant |
| UK-ROHS | Compliant |



* Footnotes

Operating Temperature Specification applicable to non-terminated bulk fiber cable

LazrSPEED® Elite MPO Female 24 Fiber Connector, lime green



Product Classification

| | |
|------------------------------|---|
| Regional Availability | Asia Australia/New Zealand EMEA Latin America North America |
| Portfolio | CommScope® |
| Product Type | Fiber connector |
| Product Brand | LazrSPEED® |

General Specifications

| | |
|--------------------------|----------------|
| Color | Lime green |
| Color, boot | Red |
| Ferrule Geometry | Flat |
| Interface | MPO/UPC Female |
| Interface Feature | Unpinned |
| Total Fiber Count | 24 |

Dimensions

| | |
|----------------------------------|--------------------|
| Length | 60.1 mm 2.366 in |
| Compatible Cable Diameter | 3 mm 0.118 in |

Material Specifications

| | |
|-------------------------|---------|
| Ferrule Material | Polymer |
|-------------------------|---------|

Mechanical Specifications

| | |
|--|----------------|
| Cable Retention Strength, maximum | 11.24 lb @ 0 ° |
|--|----------------|

Optical Specifications

| | |
|--------------------------------------|--------------------------|
| Fiber Mode | Multimode |
| Fiber Type | OM5, LazrSPEED® wideband |
| Insertion Loss Change, mating | 0.3 dB |

860634624

| | |
|---|------------------|
| Optical Components Standard | ANSI/TIA-568-C.3 |
| Insertion Loss Change, temperature | 0.3 dB |
| Insertion Loss, maximum | 0.27 dB |
| Insertion Loss, ULL, maximum | 0.2 dB |
| Return Loss, minimum | 27 dB |

Packaging and Weights

| | |
|---------------------------|---|
| Packaging quantity | 1 |
|---------------------------|---|

Regulatory Compliance/Certifications

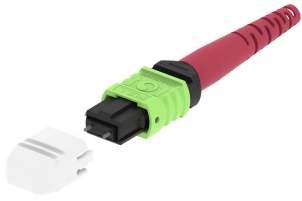
| Agency | Classification |
|---------------|--|
| CHINA-ROHS | Above maximum concentration value |
| ISO 9001:2015 | Designed, manufactured and/or distributed under this quality management system |
| REACH-SVHC | Compliant as per SVHC revision on www.commscope.com/ProductCompliance |
| ROHS | Compliant/Exempted |
| UK-ROHS | Compliant |



* Footnotes

| | |
|---|---|
| Insertion Loss Change, mating | TIA-568: Maximum insertion loss change after 500 matings |
| Insertion Loss Change, temperature | Maximum insertion loss change from -10 °C to +60 °C (+14 °F to +140 °F) |

860634625



LazrSPEED® Elite MPO Male 24 Fiber Connector, lime green

Product Classification

| | |
|------------------------------|---|
| Regional Availability | Asia Australia/New Zealand EMEA Latin America North America |
| Portfolio | CommScope® |
| Product Type | Fiber connector |
| Product Brand | LazrSPEED® |

General Specifications

| | |
|--------------------------|--------------|
| Color | Lime green |
| Color, boot | Red |
| Ferrule Geometry | Flat |
| Interface | MPO/UPC Male |
| Interface Feature | Pinned |
| Total Fiber Count | 24 |

Dimensions

| | |
|----------------------------------|--------------------|
| Length | 60.1 mm 2.366 in |
| Compatible Cable Diameter | 3 mm 0.118 in |

Material Specifications

| | |
|-------------------------|---------|
| Ferrule Material | Polymer |
|-------------------------|---------|

Mechanical Specifications

| | |
|--|----------------|
| Cable Retention Strength, maximum | 11.24 lb @ 0 ° |
|--|----------------|

Optical Specifications

| | |
|--------------------------------------|--------------------------|
| Fiber Mode | Multimode |
| Fiber Type | OM5, LazrSPEED® wideband |
| Insertion Loss Change, mating | 0.3 dB |
| Optical Components Standard | ANSI/TIA-568-C.3 |

860634625

| | |
|---|---------|
| Insertion Loss Change, temperature | 0.3 dB |
| Insertion Loss, maximum | 0.27 dB |
| Insertion Loss, ULL, maximum | 0.2 dB |
| Return Loss, minimum | 27 dB |

Packaging and Weights

| | |
|---------------------------|---|
| Packaging quantity | 1 |
|---------------------------|---|

Regulatory Compliance/Certifications

| Agency | Classification |
|---------------|--|
| CHINA-ROHS | Above maximum concentration value |
| ISO 9001:2015 | Designed, manufactured and/or distributed under this quality management system |
| ROHS | Compliant/Exempted |
| UK-ROHS | Compliant/Exempted |



* Footnotes

| | |
|---|---|
| Insertion Loss Change, mating | TIA-568: Maximum insertion loss change after 500 matings |
| Insertion Loss Change, temperature | Maximum insertion loss change from -10 °C to +60 °C (+14 °F to +140 °F) |