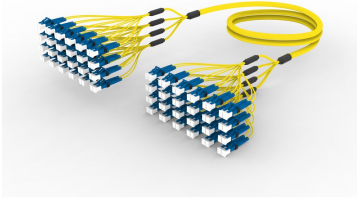


# F4WLCLCAH

## Base Product



Singlemode LC/UPC to LC/UPC, InstaPATCH® 360 Ruggedized Fiber Fanout Cable Assembly, 48-Fiber, Low Smoke Zero Halogen (LSZH)

## Product Classification

|                              |   |
|------------------------------|---|
| <b>Regional Availability</b> | Europe   Middle East/Africa   |
| <b>Portfolio</b>             | CommScope®  |
| <b>Product Type</b>          | Ruggedized fanout   |
| <b>Product Brand</b>         | SYSTIMAX InstaPATCH® 360  |
| <b>Ordering Note</b>         | For lengths greater than 999 ft (304 m), orders must be in meters   Minimum length may vary based on cable configuration   Not available in the United States or Canada |

## General Specifications

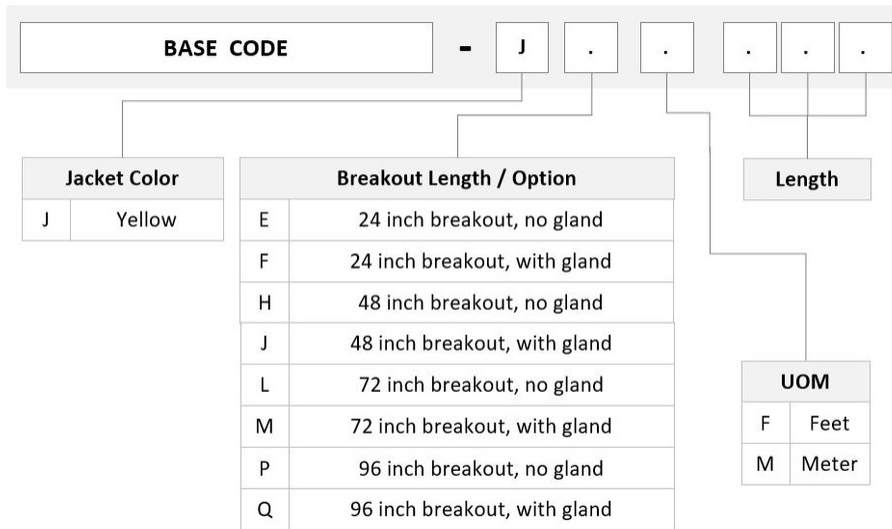
|                                     |          |
|-------------------------------------|----------|
| <b>Color, boot A</b>                | Blue     |
| <b>Color, connector A</b>           | Blue     |
| <b>Color, boot B</b>                | Blue     |
| <b>Color, connector B</b>           | Blue     |
| <b>Construction Type</b>            | Stranded |
| <b>Furcation Color</b>              | Yellow   |
| <b>Interface, Connector A</b>       | LC/UPC   |
| <b>Interface, Connector B</b>       | LC/UPC   |
| <b>Jacket Color</b>                 | Yellow   |
| <b>Fibers per Subunit, quantity</b> | 12       |
| <b>Total Fibers, quantity</b>       | 48       |

## Dimensions

|   |         |
|---|---------|
| <b>Cable Assembly Length Range (m)</b>  | 3 – 305 |
| <b>Cable Assembly Length Range (ft)</b> | 8 – 999 |

# F4WLCLCAH

## Ordering Tree



## Mechanical Specifications

**Cable Retention Strength, maximum** 11.24 lb @ 0 ° | 4.40 lb @ 90 °

## Optical Specifications

**Fiber Mode** Singlemode

**Fiber Type** G.652.D | G.657.A1, TeraSPEED®

## Environmental Specifications

**Operating Temperature** -10 °C to +60 °C (+14 °F to +140 °F)

**Environmental Space** Indoor | Low Smoke Zero Halogen (LSZH)

## Regulatory Compliance/Certifications

| Agency        | Classification   |
|---------------|--|
| ANATEL        | Compliant  |
| CHINA-ROHS    | Below maximum concentration value  |
| ISO 9001:2015 | Designed, manufactured and/or distributed under this quality management system   |
| REACH-SVHC    | Compliant as per SVHC revision on <a href="http://www.commscope.com/ProductCompliance">www.commscope.com/ProductCompliance</a> |
| ROHS          | Compliant  |
| UK-ROHS       | Compliant  |

# F4WLCLCAH

---



## Included Products

760239614  
N-048-MP-8W-F12YL/B2

- Fiber indoor cable, TeraSPEED® Low Smoke Zero Halogen Riser, 48 fibers, MPO Trunk, 12 fiber subunits, Singlemode G.652.D and G.657.A1, Gel-free, Feet jacket marking, Yellow jacket color, B2ca Flame rating

860637435

- LC/UPC Connector, Singlemode, Blue, Short Boot