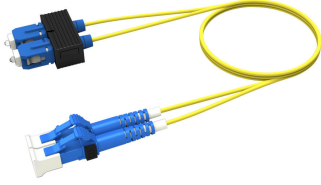


# AFGLFSFM2

---

## Base Product



Fiber Patch Cord, Singlemode G.657.A2, Grade B, LC/UPC to SC/UPC, Duplex, 1.6 mm LSZH jacket

## Product Classification

<b>Regional Availability</b>	Asia   Australia/New Zealand   Europe   Latin America   Middle East /Africa   North America
<b>Portfolio</b>	CommScope®
<b>Product Type</b>	Fiber patch cord, duplex
<b>Product Series</b>	AFG

## General Specifications

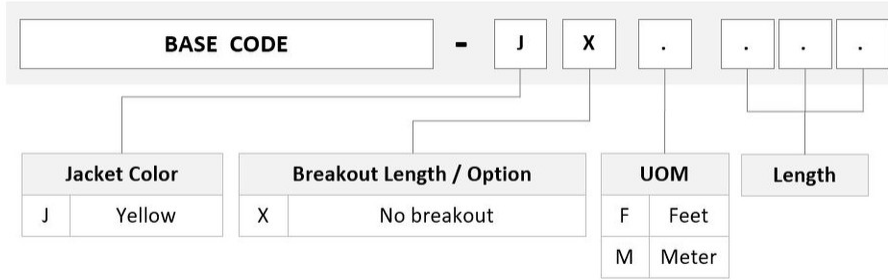
<b>Connector A, quantity</b>	2
<b>Color, connector A</b>	Blue
<b>Connector B, quantity</b>	2
<b>Color, connector B</b>	Blue
<b>Interface, Connector A</b>	LC/UPC
<b>Interface, Connector B</b>	SC/UPC
<b>Total Fibers, quantity</b>	2
<b>Transmission Standards</b>	IEC 61755

## Dimensions

<b>Cable Assembly Length Range (m)</b>	1 – 999
<b>Cable Assembly Length Range (ft)</b>	1 – 999
<b>Diameter Over Jacket</b>	1.6 mm   0.063 in

## Ordering Tree

# AFGLFSFM2



## Mechanical Specifications

<b>Minimum Bend Radius, loaded</b>	50 mm   1.969 in
<b>Minimum Bend Radius, unloaded</b>	30 mm   1.181 in
<b>Tensile Load, long term, maximum</b>	66 N   14.837 lbf
<b>Tensile Load, short term, maximum</b>	220 N   49.458 lbf
<b>Cable Crush Resistance, maximum</b>	3.5 N/mm   19.986 lb/in
<b>Mating Durability, maximum</b>	0.2 dB @ 500 cycles

## Optical Specifications

<b>Fiber Mode</b>	Singlemode
<b>Fiber Type</b>	G.657.A2, TeraSPEED®
<b>Performance Grade</b>	IEC Random Mating Grade B
<b>Insertion Loss, maximum, connector A</b>	0.25 dB
<b>Insertion Loss, maximum, connector B</b>	0.25 dB
<b>Return Loss, minimum, connector A</b>	50 dB
<b>Return Loss, minimum, connector B</b>	50 dB

## Environmental Specifications

<b>Operating Temperature</b>	-20 °C to +60 °C (-4 °F to +140 °F)
<b>Environmental Space</b>	Dual Rated LSZH/Riser

## Packaging and Weights

<b>Packaging quantity</b>	1
---------------------------	---

## Regulatory Compliance/Certifications

# AFGLFSFM2

---

**Agency**

CHINA-ROHS

ISO 9001:2015

ROHS

UK-ROHS

**Classification**

Below maximum concentration value

Designed, manufactured and/or distributed under this quality management system

Compliant

Compliant/Exempted

## Included Products

- 460159817 – Fiber indoor cable, DX Low Smoke Zero Halogen YL G.657 .A2, 1 fiber, Singlemode G.657.A2, 1.6 mm diameter, Feet jacket marking, Yellow jacket color
- 860637435 – LC/UPC Connector, Singlemode, Blue, Short Boot
- 860645409 – TeraSPEED® SC/UPC Connector Kit, Duplex for 2.0 mm Fiber, Singlemode, Blue, Short Boot

## \* Footnotes

**Performance Grade**

Guarantee to meet IEC 61755-1 Random Mating requirement

# 460159817

---

Fiber indoor cable, DX Low Smoke Zero Halogen YL G.657 .A2, 1 fiber, Singlemode G.657.A2, 1.6 mm diameter, Feet jacket marking, Yellow jacket color

## Product Classification

<b>Regional Availability</b>	Asia   Australia/New Zealand   EMEA   Latin America   North America
<b>Portfolio</b>	CommScope®
<b>Product Type</b>	Fiber indoor cable
<b>Product Series</b>	L-MP

## General Specifications

<b>Cable Type</b>	Cordage
<b>Inner Jacket Color</b>	Yellow
<b>Jacket Color</b>	Yellow
<b>Jacket Marking</b>	Feet
<b>Total Fiber Count</b>	1

## Dimensions

<b>Diameter Over Jacket</b>	1.6 mm   0.063 in
-----------------------------	-------------------

## Optical Specifications

<b>Fiber Type</b>	G.657.A2   G.657.A2, TeraSPEED®
-------------------	---------------------------------

## Environmental Specifications

<b>Installation temperature</b>	-20 °C to +60 °C (-4 °F to +140 °F)
<b>Operating Temperature</b>	-20 °C to +70 °C (-4 °F to +158 °F)
<b>Storage Temperature</b>	-40 °C to +70 °C (-40 °F to +158 °F)
<b>Environmental Space</b>	Low Smoke Zero Halogen (LSZH)

## Environmental Test Specifications

<b>Heat Age</b>	-20 °C to +85 °C (-4 °F to +185 °F)
<b>Low High Bend</b>	-20 °C to +70 °C (-4 °F to +158 °F)
<b>Temperature Cycle</b>	-20 °C to +70 °C (-4 °F to +158 °F)

## Packaging and Weights

# 460159817

---

**Cable weight** 5.3 kg/km | 3.561 lb/kft

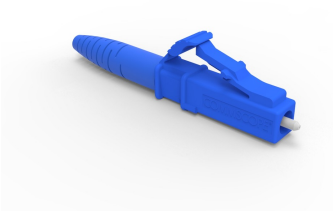
## Regulatory Compliance/Certifications

<b>Agency</b>	<b>Classification</b>
CHINA-ROHS	Below maximum concentration value
REACH-SVHC	Compliant as per SVHC revision on <a href="http://www.commscope.com/ProductCompliance">www.commscope.com/ProductCompliance</a>
ROHS	Compliant
UK-ROHS	Compliant



### \* Footnotes

**Operating Temperature** Specification applicable to non-terminated bulk fiber cable



LC/UPC Connector, Singlemode, Blue, Short Boot

## Product Classification

<b>Regional Availability</b>	Asia   Australia/New Zealand   EMEA   Latin America   North America
<b>Portfolio</b>	CommScope®
<b>Product Type</b>	Fiber connector

## General Specifications

<b>Color, boot</b>	Blue
<b>Color, housing</b>	Blue
<b>Interface</b>	LC/UPC

## Dimensions

<b>Length</b>	41.6 mm   1.638 in
---------------	--------------------

## Material Specifications

<b>Ferrule Material</b>	Zirconia
-------------------------	----------

## Mechanical Specifications

<b>Cable Retention Strength, maximum</b>	11.24 lb @ 0 °
--	----------------

## Optical Specifications

<b>Fiber Mode</b>	Singlemode
<b>Insertion Loss Change, mating</b>	0.2 dB
<b>Optical Components Standard</b>	ANSI/TIA-568. 3-D   IEC 61753-1
<b>Insertion Loss Change, temperature</b>	0.3 dB
<b>Insertion Loss, maximum</b>	0.25 dB
<b>Return Loss, minimum</b>	55 dB

## Regulatory Compliance/Certifications

# 860637435

---

**Agency**

CHINA-ROHS

ROHS

UK-ROHS

**Classification**

Below maximum concentration value

Compliant

Compliant

## \* Footnotes

**Insertion Loss Change, mating**

TIA-568: Maximum insertion loss change after 500 matings

**Insertion Loss Change, temperature**

Maximum insertion loss change from -10 °C to +60 °C (+14 °F to +140 °F)

## TeraSPEED® SC/UPC Connector Kit, Duplex for 2.0 mm Fiber, Singlemode, Blue, Short Boot

### Product Classification

<b>Regional Availability</b>	Asia   Australia/New Zealand   EMEA   Latin America   North America
<b>Portfolio</b>	CommScope®
<b>Product Type</b>	Fiber connector
<b>Product Brand</b>	TeraSPEED®

### General Specifications

<b>Body Style</b>	Duplex
<b>Color</b>	Blue
<b>Interface</b>	SC/UPC

### Dimensions

<b>Length</b>	50.3 mm   1.98 in
<b>Compatible Cable Diameter</b>	2 mm   0.079 in

### Material Specifications

<b>Ferrule Material</b>	Zirconia
-------------------------	----------

### Mechanical Specifications

<b>Cable Retention Strength, maximum</b>	11.24 lb @ 0 °
--	----------------

### Optical Specifications

<b>Fiber Type</b>	G.652.D and G.657.A1, TeraSPEED®   OS2
<b>Optical Components Standard</b>	ANSI/TIA-568-C.3   GR-326-CORE
<b>Insertion Loss, ULL, maximum</b>	0.25 dB
<b>Return Loss, minimum</b>	50 dB

### Packaging and Weights

<b>Packaging quantity</b>	1
---------------------------	---

### Regulatory Compliance/Certifications

<b>Agency</b>	<b>Classification</b>
---------------	-----------------------



# 860645409

---

CHINA-ROHS

Below maximum concentration value

REACH-SVHC

Compliant as per SVHC revision on [www.commscope.com/ProductCompliance](http://www.commscope.com/ProductCompliance)

ROHS

Compliant

UK-ROHS

Compliant

