

C74927-000 | FOSC-400A4-S24-3-NNN



FOSC® 400 A4 Fiber Optic Splice Closure, Heat Shrink Cable sealing, three pre-installed 24-splice trays

- Single-ended, O-ring sealed dome closure for splicing feeder and distribution cables
- Compatible with most common cable types: e.g. loose tube, central core, ribbon fiber
- FOSC splice trays hinged for access to any splice without disturbing other trays
- Closure can be used in aerial, pedestal and underground (up to 5 meters) environments
- Compatible with CommScope's CWDM modules and optical splitter trays

Product Classification

Regional Availability	Asia EMEA
Product Type	Single-ended, round fiber closure
Product Brand	FOSC®
Product Series	FOSC 400

General Specifications

Cable Blocking Components	None
Cable Entry Drop Port Style	Round
Cable Entry Main Port Style	Oval
Cable Ports Quantity, total	1 oval port (2 cables) + 4 round ports
Cable Sealing Type	Heat shrink
Closure Sealing Type	Dome-to-base clamp with O-ring
Closure Style	Single-ended
Color	Black
Flash Test Valve	None
Ground Feed-through	None
Mounting	Pole Strand Wall
Network Area Type	Feeder
Splice Tray Included, quantity	3
Splice Tray Type Included	24-way, heat shrink
Splicing Capacity, Single Fusion, maximum	48
Splicing Capacity, Single Splice, 12 fibers, maximum	48
Splicing Capacity, Single Splice, 6 fibers, maximum	24

C74927-000 | FOSC-400A4-S24-3-NNN

Splicing Type, Supported

Single fusion

Dimensions

Length

420 mm | 16.535 in

Diameter

150 mm | 5.906 in

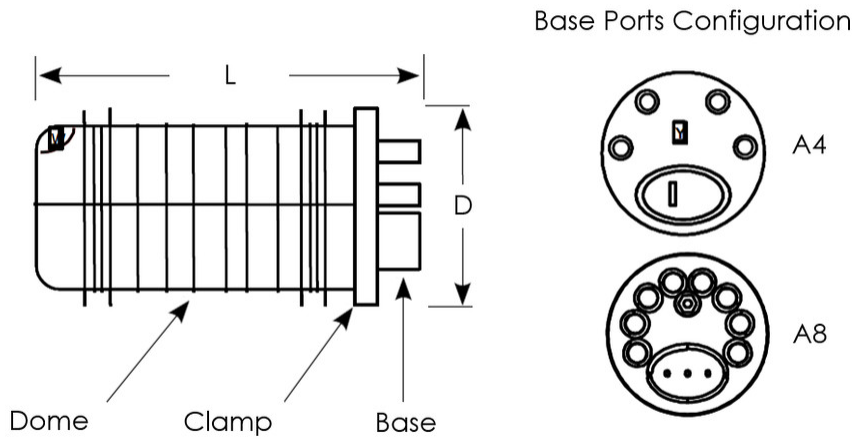
Diameter, with clamp

180 mm | 7.087 in

Main Cable Diameter, maximum

25 mm | 0.984 in

Dimension Drawing



Ordering Tree

C74927-000 | FOSC-400A4-S24-3-NNN

FOSC - 400 X - X - X - X X X

Closure size

A4	420mm - 4 round ports
B4	540mm - 4 round ports
D5	710mm - 5 round ports
A8	410mm - 8 round ports ¹⁴
A5	420mm - 4 round ports
B2	540mm - 2 round ports
D5/B	505mm - 5 round ports

Tray type

NT	No Trays				
<i>Splices in splice protectors at tray exterior</i>					
		A4	AB	B2, B4, D5/B	D5
S12	12 SMOUV splice protectors (45mm)			X	
S24	24 SMOUV splice protectors (45mm)	X	X	X	
A24	24 ANT splice protectors	X	X	X	
4R4	4 splice protectors for ribbon cable with 4 fibers	X	X		
6R4	6 splice protectors for ribbon cable with 4 fibers			X	
<i>Splices stored in modules at tray interior</i>					
		A4	AB	B2, B4, D5/B	D5
12	12 splice protectors (2 modules, 6 splices/module)	X	X	X	
24	24 splice protectors (2 modules, 12 splices/module)	X	X	X	
36	36 splice protectors (6 modules, 6 splices/module)				X
S96	96 SMOUV splice protectors (45mm)				X
I96	96 SMOUV splice protectors (60 mm)				X
A96	96 ANT splice protectors				X
RT24	24 splices for ribbon cable with 12 fibers (4 modules, 6 splices/module)				X

Flash test valve

V	Pre-installed flash test valve
N	No flash test valve

Ground feedthrough

G	Pre-installed ground feedthrough
N	No ground feedthrough

Moisture cable blocking

N	No blocking
B	Blocking

Number of splice trays

0	No trays
<i>Closure size</i>	
1...3	A4
1...4/8	A8 ¹⁴
1...6	B ¹⁴
1...12	D5/B ¹⁴
1...8	D5 ¹⁴

¹⁴ AB closure can accept a mix of standard and slim trays; please contact your local sales representative.

¹⁵ Maximum 8 trays in case of S6 or A6 tray type

¹⁶ B closure can initially be fitted with trays; however, retrofitting a standard "B" closure (delivered with 4 trays or fewer) with a 5th and 6th tray is not possible. The B closure can be ordered with up to 5 trays pre-installed and capacity for later addition of a 6th tray (FOSC-400B4XXX/6...).

If 5 or 6 trays are required, a storage basket cannot be used.

¹⁷ If 7 or 8 trays are required, a storage basket cannot be used.

Material Specifications

Material Type

Impact-resistant polymer

Environmental Specifications

Environmental Space

Below ground | Buried

Qualification Standards

IEC 61300, 6 m waterhead

Packaging and Weights

Packaging quantity

1

Packaging Type

Box | Carton

Weight, net

1.9 kg | 4.189 lb

Regulatory Compliance/Certifications

Agency	Classification
CHINA-ROHS	Below maximum concentration value
ISO 9001:2015	Designed, manufactured and/or distributed under this quality management system
REACH-SVHC	Compliant as per SVHC revision on www.commscope.com/ProductCompliance
ROHS	Compliant
UK-ROHS	Compliant

