

A08143-000 | FOSC400-A8-12-1-AGV



FOSC® 400 A8 Fiber Optic Splice Closure, Heat Shrink Cable sealing, one pre-installed 12-splice tray, ground feedthrough lugs, with test valve

- Single-ended, O-ring sealed dome closure for splicing feeder and distribution cables
- Compatible with most common cable types: e.g. loose tube, central core, ribbon fiber
- FOSC splice trays hinged for access to any splice without disturbing other trays
- Closure can be used in aerial, pedestal and underground (up to 5 meters) environments
- Compatible with CommScope's CWDM modules and optical splitter trays

Product Classification

Regional Availability	Latin America North America
Product Type	Single-ended, round fiber closure
Product Brand	FOSC®
Product Series	FOSC 400

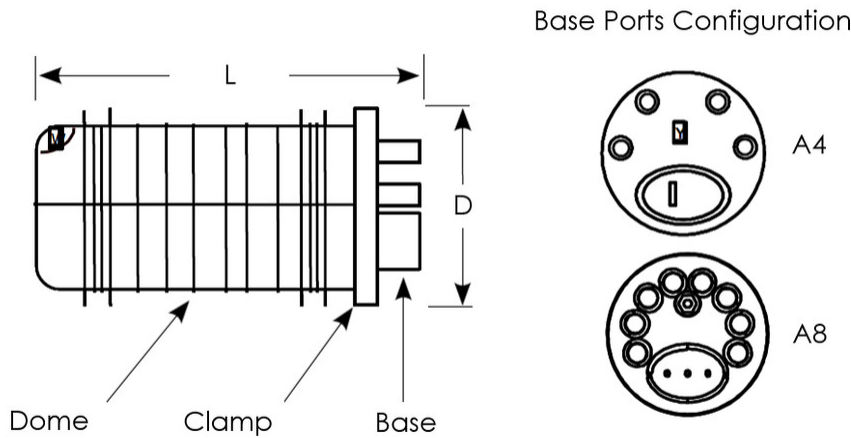
General Specifications

Cable Blocking Components	None
Cable Entry Drop Port Style	Round
Cable Entry Main Port Style	Oval
Cable Ports Quantity, total	1 oval port (2 cables) + 8 round ports
Cable Sealing Type	Heat shrink
Closure Sealing Type	Dome-to-base clamp with O-ring
Closure Style	Single-ended
Color	Black
Flash Test Valve	Pre-installed
Ground Feed-through	Included
Mounting	Pole Strand Wall
Network Area Type	Feeder
Splice Tray Included, quantity	1
Splice Tray Type Included	12-way, heat shrink
Splicing Capacity, Mass Fusion, maximum	144
Splicing Capacity, Single Fusion, maximum	96
Splicing Capacity, Single Splice, 12 fibers, maximum	96

A08143-000 | FOSC400-A8-12-1-AGV

Splicing Capacity, Single Splice, 6 fibers, maximum	48
Splicing Type, Supported	Single fusion
Dimensions	
Length	420 mm 16.535 in
Diameter	150 mm 5.906 in
Diameter, with clamp	180 mm 7.087 in
Main Cable Diameter, maximum	25 mm 0.984 in

Dimension Drawing



Ordering Tree

A08143-000 | FOSC400-A8-12-1-AGV

FOSC 400-XX-XX-X-XXX

Closure Size (inches)

A	8 dia. x 19 1/2 long
B	8 dia. x 25 long
C	11 1/2 dia. x 23 long
D	11 1/2 dia. x 31 long

Cable Entry Ports (in addition to oval port)

All closures include an oval port for pass through cables

2	B closure only
4	A and B closure only
5	C and D closure only
8	A closure only

Capacity (or type) of Splice Tray

12	A, B, or C tray w/two SM6 splice modules
24*	A, B or C tray w/two SM12 splice modules
36	D tray with six SM6 splice modules
72*	D tray with six SM12 splice modules
R1	A, B size ribbon tray (accommodates 12 ribbons/144 fibers)
R2	D size ribbon tray (24 ribbons/288 fibers)
R3	C size ribbon tray (18 ribbons/216 fibers)
NT	No Trays

*Note: SMOUV (1120-01-US) splice protection sleeves should be used with SM12 splice modules.

Valve for Flash Test

V	Valve
N	No Valve

Ground Feed-through Lugs

G	Grounding
N	None

Cable Blocking Components

B	Blocking
N	None

Number of Splice Trays

0 or 1 is standard

Material Specifications

Material Type

Impact-resistant polymer

Environmental Specifications

Environmental Space

Below ground | Buried

Qualification Standards

IEC 61300, 6 m waterhead

Water Resistance

Flash test valve at 5 psi (40 kPa)

Packaging and Weights

Packaging quantity

1

Packaging Type

Box | Carton

Weight, net

2.4 kg | 5.291 lb

Regulatory Compliance/Certifications

Agency

Classification

CHINA-ROHS

Below maximum concentration value

ISO 9001:2015

Designed, manufactured and/or distributed under this quality management system

A08143-000 | FOSC400-A8-12-1-AGV

REACH-SVHC

Compliant as per SVHC revision on www.commscope.com/ProductCompliance

ROHS

Compliant

UK-ROHS

Compliant

