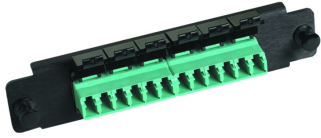


# 760148056 | PNL-BK-012-MFA-LC12-AQ



Adapter Pack, Black, 1000-Type, with 1 LazrSPEED® 12 fiber, Multimode LC ganged adapter, aqua, shuttered

## Product Classification

|                              |   |
|------------------------------|---|
| <b>Regional Availability</b> | Asia   Australia/New Zealand   EMEA   Latin America   North America |
| <b>Portfolio</b>             | CommScope®  |
| <b>Product Type</b>          | Fiber adapter pack  |
| <b>Product Brand</b>         | LazrSPEED®  |
| <b>Product Series</b>        | 1000-style  |

## General Specifications

|                                    |   |
|------------------------------------|---|
| <b>Application</b>                 | Used in conjunction with SD Panels   Used in conjunction with panels and enclosures (rack, wall, and floor mount) that accept 1000 style panels |
| <b>Adapter Color</b>               | Aqua  |
| <b>Adapter Cutout, quantity</b>    | 1   |
| <b>Adapters, quantity</b>          | 1   |
| <b>Body Style</b>                  | Ganged  |
| <b>Interface</b>                   | LC/UPC  |
| <b>Pigtails Included, quantity</b> | 0   |
| <b>Shuttered</b>                   | No  |
| <b>Total Ports, quantity</b>       | 12  |

## Material Specifications

|                                  |                |
|----------------------------------|----------------|
| <b>Alignment Sleeve Material</b> | Molded plastic |
|----------------------------------|----------------|

## Optical Specifications

|                   |           |
|-------------------|-----------|
| <b>Fiber Mode</b> | Multimode |
|-------------------|-----------|

## Regulatory Compliance/Certifications

| <b>Agency</b> | <b>Classification</b>             |
|---------------|-----------------------------------|
| CHINA-ROHS    | Below maximum concentration value |

# 760148056 | PNL-BK-012-MFA-LC12-AQ

---

|               |  |
|---------------|--|
| ISO 9001:2015 | Designed, manufactured and/or distributed under this quality management system   |
| REACH-SVHC    | Compliant as per SVHC revision on <a href="http://www.commscope.com/ProductCompliance">www.commscope.com/ProductCompliance</a> |
| ROHS          | Compliant  |
| UK-ROHS       | Compliant  |

