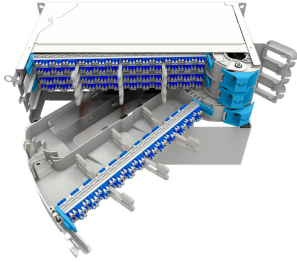


EK3439-000 | MFPS-IXD-P-PNL1-288



MFPS Fiber Optic panel, 3RU, 96 fibers/RU, patch/patch, front patch cords orientation to the right, 288 LC/UPC

- Suitable for cabinets and POP locations
- Various available panel heights to support termination counts from 12 to 288
- Simple wrap-around design for easy fiber routing
- Supports patch cord diameters of 1.2 to 2.4mm (XD-series require the usage of 1.2mm patch cords)

Product Classification

Regional Availability	EMEA
Portfolio	CommScope®
Product Type	Fiber patch panel
Product Series	MFPS

General Specifications

Functionality	Patching
Color	Gray
Door Type, front	Compression latch Hinged
Interface, front	LC/UPC
Patch Cord Entry Location	Front, right side
Patch Cord Routing	Right sided
Rack Type	EIA 19 in ETSI 600 mm
Rack Units	3
Shelf Movement	Hinged
Total Ports, quantity	288
Transmission Standards	ETSI EN 300 019-1-3 IEC 61300-3-34

Dimensions

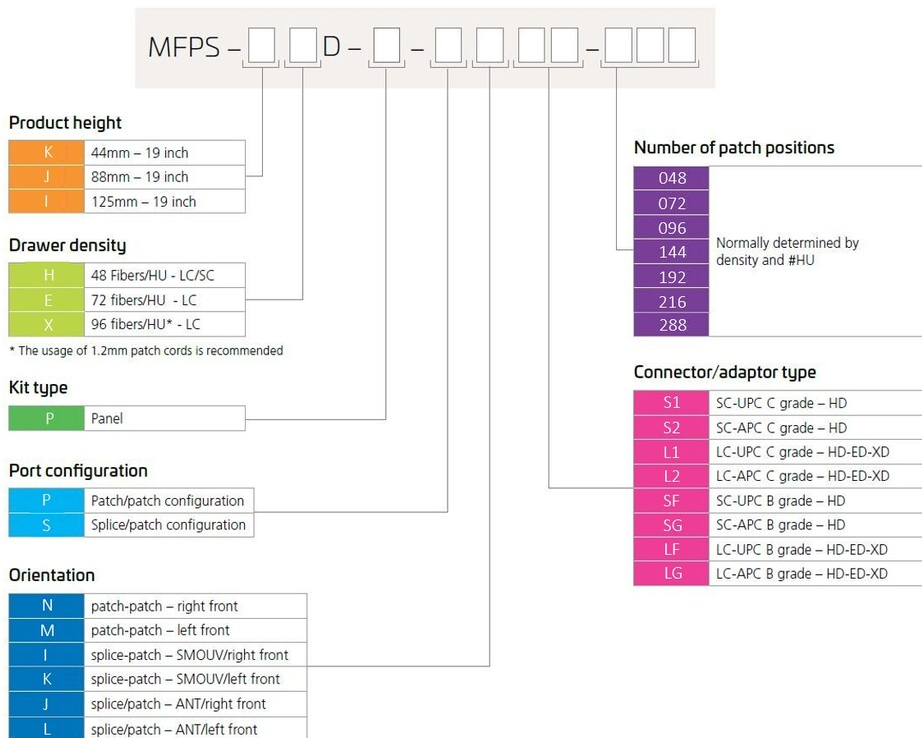
Height	125 mm 4.921 in
Width	482.6 mm 19 in
Depth	279.91 mm 11.02 in

Port Configuration

EK3439-000 | MFPS-IXD-P-PNL1-288

MFPS Capacities		48		72	96
Connector Type		SC	LC	LC	LC Adapter Pack
19 inch	1HU	48	48	72	96
	2HU	96	96	144	192
	2.8 HU	144	144	216	288

Ordering Tree



Material Specifications

- Finish** Powder coated
- Material Type** Ethylene-propylene (EP) | Polyethylene terephthalate (PET)

Optical Specifications

EK3439-000 | MFPS-IXD-P-PNL1-288

Fiber Mode Singlemode

Environmental Specifications

Operating Temperature -40 °C to +70 °C (-40 °F to +158 °F)
Storage Temperature -20 °C to +85 °C (-4 °F to +176 °F)
Flammability Rating UL 94 V-0

Packaging and Weights

Included Mounting hardware
Packaging quantity 1

Regulatory Compliance/Certifications

Agency	Classification
CHINA-ROHS	Below maximum concentration value
ISO 9001:2015	Designed, manufactured and/or distributed under this quality management system
REACH-SVHC	Compliant as per SVHC revision on www.commscope.com/ProductCompliance
ROHS	Compliant
UK-ROHS	Compliant

