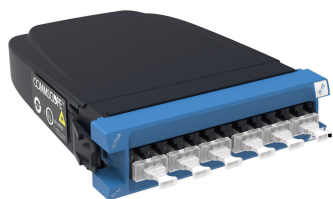


# 760242968 | 360DMiP-12LC-SM



InstaPATCH® 360 TeraSPEED® Standard Module, 12 LC fibers (6 duplex ports), Blue, iPatch Ready

## Product Classification

<b>Regional Availability</b>	Asia   Australia/New Zealand   EMEA   Latin America   North America
<b>Portfolio</b>	CommScope®
<b>Product Type</b>	Fiber module

## General Specifications

<b>Functionality</b>	Breakout
<b>Adapters, quantity, front</b>	6
<b>Adapters, quantity, rear</b>	1
<b>Color, front</b>	Blue
<b>Color, rear</b>	Gray
<b>Data Module Type</b>	Standard
<b>Intelligence Type</b>	iPatch® ready
<b>Interface, front</b>	LC/UPC
<b>Interface Feature, front</b>	Dust caps
<b>Interface, rear</b>	MPO
<b>Interface Feature, rear</b>	Pinned   Reduced footprint
<b>Shuttered</b>	No
<b>Total Fibers, quantity</b>	12
<b>Total Ports, quantity, front</b>	12

## Dimensions

<b>Height</b>	30.48 mm   1.2 in
<b>Width</b>	91.44 mm   3.6 in
<b>Depth</b>	116.84 mm   4.6 in

## Optical Specifications

<b>Fiber Mode</b>	Singlemode
-------------------	------------

# 760242968 | 360DMiP-12LC-SM

---

<b>Fiber Type</b>	G.652.D and G.657.A1, TeraSPEED®   OS2
<b>Insertion Loss Change, mating</b>	0.3 dB
<b>Insertion Loss Change, temperature</b>	0.3 dB
<b>Insertion Loss, maximum</b>	1.05 dB

## Environmental Specifications

<b>Safety Standard</b>	UL
------------------------	----

## Packaging and Weights

<b>Packaging quantity</b>	1
---------------------------	---

## Regulatory Compliance/Certifications

<b>Agency</b>	<b>Classification</b>
CHINA-ROHS	Below maximum concentration value
ISO 9001:2015	Designed, manufactured and/or distributed under this quality management system
REACH-SVHC	Compliant as per SVHC revision on <a href="http://www.commscope.com/ProductCompliance">www.commscope.com/ProductCompliance</a>
ROHS	Compliant
UK-ROHS	Compliant



## \* Footnotes

<b>Insertion Loss Change, mating</b>	Maximum insertion loss change after 500 matings
<b>Insertion Loss Change, temperature</b>	Maximum insertion loss change from -10 °C to +60 °C (+14 °F to +140 °F)