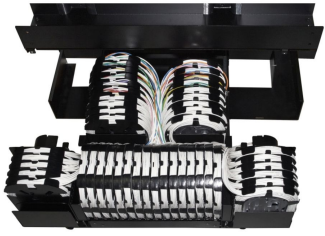


NG4-CH200000



NG4access® Universal Splice Chassis, unloaded, for holding up to 48 splice trays, black

- Each splice chassis can hold up to 48 splice trays
- Each tray provides up to 72 fibers, for a total of 3,456 fibers per splice chassis
- Can be installed without sacrificing overall frame termination density

Product Classification

Regional Availability	Latin America North America
Portfolio	CommScope®
Product Type	Fiber splice panel
Product Brand	NG4access®
Product Series	NG4

General Specifications

Functionality	Splicing
Application	Used in NG4access-style frames only
Body Style	Symmetrical
Color	Black
Color, front	Black
Growth Configuration	Unloaded
Interface, front	Unloaded
Patching Capacity, maximum	0
Rack Type	NG4
Rack Units	9
Shelf Movement	Sliding
Total Ports, quantity	48

Dimensions

Height	406.15 mm 15.99 in
Width	685.8 mm 27 in
Depth	313.94 mm 12.36 in

NG4-CH200000

Material Specifications

Finish	Powder coated
Material Type	Steel

Packaging and Weights

Included	Mounting hardware
Packaging quantity	1
Weight, net	33.566 kg 74 lb

Regulatory Compliance/Certifications

Agency	Classification
CHINA-ROHS	Below maximum concentration value
REACH-SVHC	Compliant as per SVHC revision on www.commscope.com/ProductCompliance
ROHS	Compliant
UK-ROHS	Compliant

