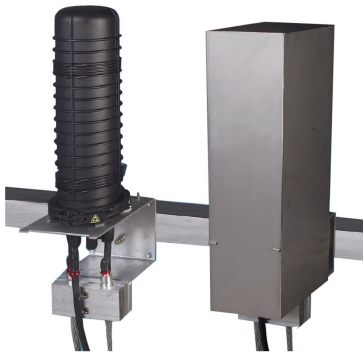


CK6450-000 | FOSC-OPGW-B4NT-O-NNC



FOSC® OPGW B Fiber Optic Splice Closure, Heat Shrink Cable sealing, butt type, no pre-installed trays

Product Classification

Regional Availability	Asia EMEA Latin America North America
Product Type	Single-ended, round fiber closure
Product Brand	FOSC®
Product Series	FOSC OPGW

General Specifications

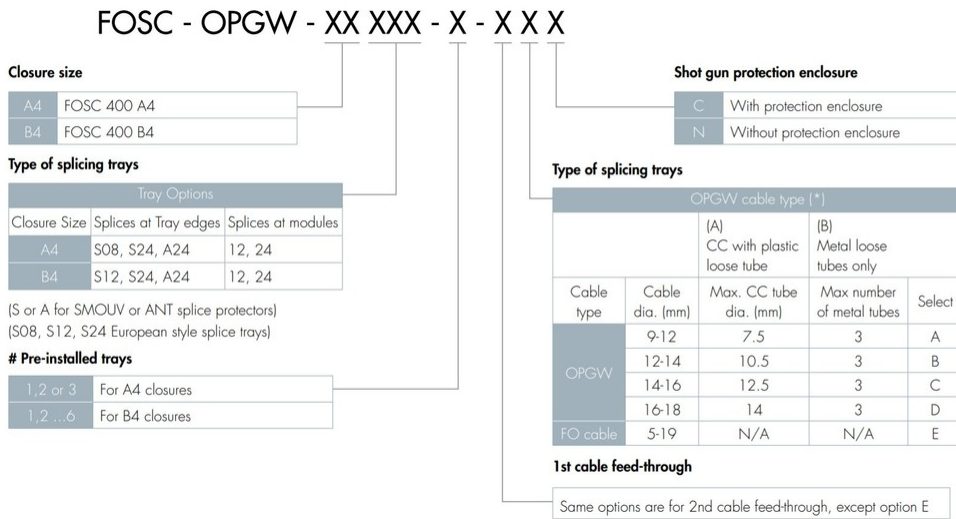
Cable Entry Drop Port Style	Round
Cable Entry Main Port Style	Round
Cable Ports Quantity, total	1 oval port (2 cables) + 4 round ports
Cable Sealing Type	Heat shrink
Closure Sealing Type	Dome-to-base clamp with O-ring
Closure Style	Single-ended
Color	Black
Ground Feed-through	None
Mounting	Pole Strand Wall
Network Area Type	Feeder
Splice Tray Included, quantity	0
Splice Tray Type Included	No trays
Splicing Capacity, Mass Fusion, maximum	144
Splicing Capacity, Single Fusion, maximum	96
Splicing Capacity, Single Splice, 12 fibers, maximum	96
Splicing Capacity, Single Splice, 6 fibers, maximum	48
Splicing Type, Supported	Mass fusion Single fusion

CK6450-000 | FOSC-OPGW-B4NT-O-NNC

Dimensions

Height	240 mm 9.449 in
Width	202 mm 7.953 in
Length	730 mm 28.74 in
Main Cable Diameter, maximum	19 mm 0.748 in

Ordering Tree



Material Specifications

Material Type Impact-resistant polymer

Environmental Specifications

Environmental Space Above ground

Qualification Standards IEC 61300, 6 m waterhead

Packaging and Weights

Packaging quantity 1

Packaging Type Box | Carton

Weight, net 18 kg | 39.683 lb

Regulatory Compliance/Certifications

Agency **Classification**

CK6450-000 | FOSC-OPGW-B4NT-O-NNC

CHINA-ROHS	Below maximum concentration value
ISO 9001:2015	Designed, manufactured and/or distributed under this quality management system
REACH-SVHC	Compliant as per SVHC revision on www.commscope.com/ProductCompliance
ROHS	Compliant
UK-ROHS	Compliant

