

ShoreTel and Ruckus Wireless UC Solution



Mobility has become a critical requirement of today's workforce. Driven by an ever-faster speed of doing business, and employees who need to stay connected wherever they are, smart organizations are deploying mobile UC solutions to provide full deskphone features in or out of the office.

Empowering the mobile workforce to communicate efficiently and cost-effectively.

ShoreTel Mobility enables businesses of all sizes to integrate leading smartphone and tablets with existing enterprise communication and applications and infrastructure securely, simply and cost-effectively.

Mobile workers are free to communicate on devices of their choice from any location (office, home, hotspots) and any network (Wi-Fi, 3G/4G or cellular.)

Businesses are deploying ShoreTel Mobility to address the key challenges associated with: BYOD (bring-your-own-device) demands from employees, soaring international roaming costs, poor in-building coverage, and integration into existing corporate PBX and Unified Communications systems.

The ShoreTel and Ruckus architecture delivers reliable wireless Unified Communications solutions for organizations seeking full PBX and multimedia capability on managed and user-owned (BYOD) mobile devices. It empowers organizations to boost efficiency and promote workplace collaboration by delivering dial-tone anywhere users work or roam, over a broad range of wired and mobile devices. Deploying on a Ruckus Wi-Fi infrastructure solves the challenge of providing consistent wireless performance and results in enterprise-quality voice, jitter-free video, and high-speed data.

The ShoreTel Mobility solution has two components that are either deployed as part of a ShoreTel UC system, or that can be deployed with other PBX and UC systems.

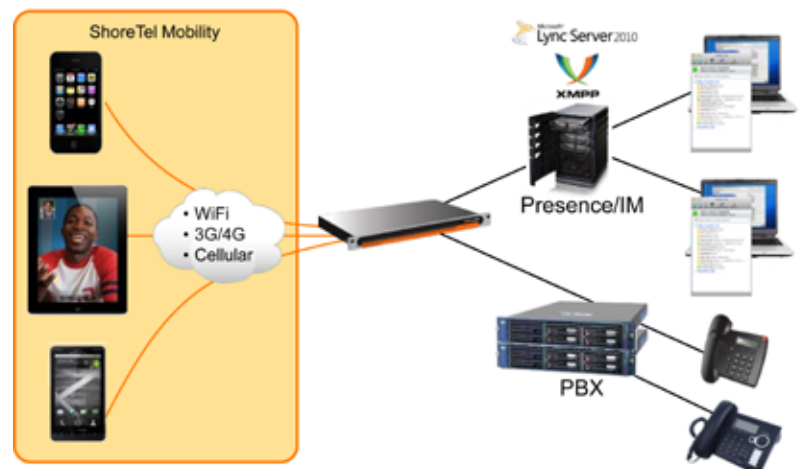
The ShoreTel Mobility Router is designed to scale from deployments as small as 10 users to well over 5,000 users. It integrates with the enterprise PBX and UC systems from ShoreTel, Cisco, Avaya, Nortel and Microsoft, and extends deskphone and UC capabilities to mobile devices via the RoamAnywhere Client.

The RoamAnywhere Client is an end-user application that is installed "over the air" on mobile devices. It natively integrates with the mobile device UI, and gives users access to features and capabilities such as extension dialing, transfer, conferencing, presence, etc., giving users the freedom to connect from any location on any network (Wi-Fi, 3G/4G, cellular.)

Wireless Infrastructure to Optimize Connectivity and Call Quality

The critical enabler for successful mobile UC deployments is high quality wireless connectivity. Interrupted or dropped connections and limited range are simply unacceptable to enterprises and their users.

A platform to extend voice and UC to mobiles



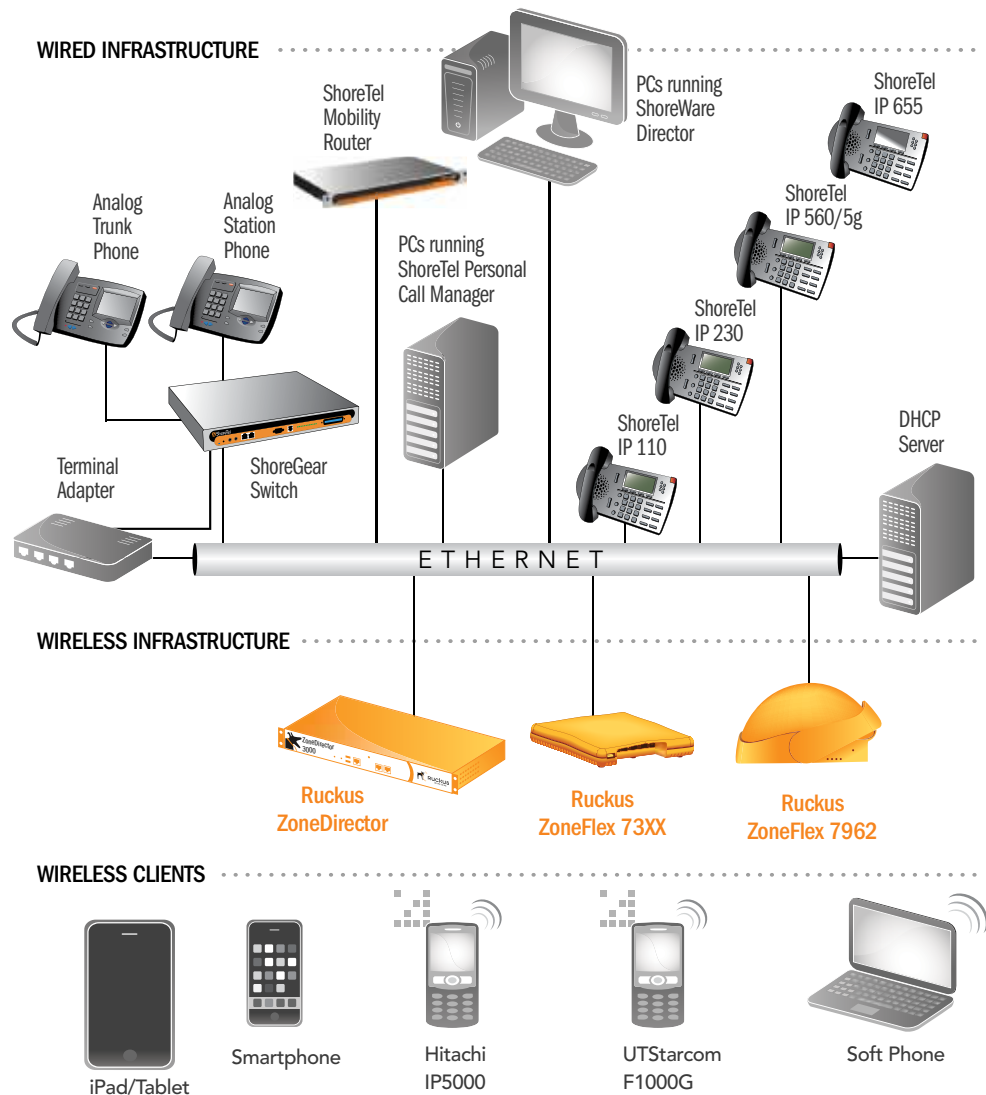
Wi-Fi must deliver reliable performance, extended reach and automatic adaptation to changes in the environment. Ruckus Smart Wi-Fi solutions are designed just for this purpose. Enterprises are using Ruckus products and technology to build more robust, adaptive and affordable wireless LAN environments within hotels, hospitals, schools, warehouses, branch offices and other locations where IT resources are sparse but requirements for a secure and robust Wi-Fi infrastructure remains high.

The Technology

At the heart of all Ruckus Wireless products is its patented Smart Wi-Fi technology. Smart Wi-Fi is a collection of unique technology breakthroughs in the areas of adaptive RF control (BeamFlex), sophisticated application-aware QoS (SmartCast), advanced security mechanisms (SmartSec) and resilient Wi-Fi meshing (Smart Mesh Networking).

Integrated within Ruckus Smart Wi-Fi systems, these technologies ensure reliable and predictable performance, essential for supporting the most challenging applications.

BeamFlex is the industry's most advanced Wi-Fi smart antenna implementation. Combining a compact internal antenna array with expert control software, BeamFlex continuously optimizes the connection for each connected client to bypass interference and physical barriers, and increase range and performance of the Wi-Fi network from 200 to 300 percent. Highly sensitive antenna elements also deliver the industry's most sensitive Wi-Fi receiving capabilities. This results in the most reliable Wi-Fi system available today.



SmartCast is an advanced traffic management engine providing myriad unique functions such as automatic flow classification, which prioritizes voice traffic to minimize latency, jitter and delay and ensure clear connections. Ruckus Smart Wi-Fi also supports both PMK caching and Opportunistic Key Caching (OKC) to minimize authentication delays when Wi-Fi devices move from one AP to another.

Challenge	Solution
High cellular communications cost	ShoreTel Mobility's patent-pending least-cost routing not only routes cellular calls via the cheapest path inside and outside the enterprise, but also uses VoIP over WLAN to drive international cost down and increase user productivity
In-building coverage	Macro-cellular services often don't reach inside buildings due to distance or building design and material issues. The ShoreTel/Ruckus solution leverages high performance WiFi signals to enable constant connectivity indoors
Security	ShoreTel Mobility secures enterprise communications for mobile workers by leveraging proven standards for authentication and encryption with X.509 digital certificates and AES-256 encryption. The solution preserves simplicity while maintaining maximum security by automatically recognizing when the user is outside the enterprise firewall, and launching an application-layer SSL VPN
Ease of Use	With ShoreTel Mobility, enterprises can extend deskphone features and UC capabilities to a natively integrated mobile client, while users can benefit a rich experience without having to relearn a new mobile interface. Additionally, the solution is effortless to deploy for administrators and integrates easily with an existing infrastructure.
Productivity	With the power of the desk phone in their pockets, mobile workers are easy to access, quick to respond and well-informed to make important decisions on the fly. Improved connectivity means less voicemail, easy access to presence and calendar information, and the ability to prioritize calls in real time. All these features are proven to help boost productivity and support business success.
Existing PBX / UC Support	ShoreTel Mobility is designed to interoperate with leading WLAN systems, PBXs and UC systems such as Cisco, Avaya, Nortel, ShoreTel and Microsoft. It also extends advanced unified communications features to leading smartphones and tablets, so your company and your end users can choose the right way for you to stay connected.

Together, Ruckus and ShoreTel enable our customers to cost-effectively deploy Mobile Unified Communications. ShoreTel provides a Mobile UC solution that is unified (same client across mobile devices) and can integrate with many different PBX solutions (providing investment protection). Ruckus WiFi provides much better coverage and connectivity while requiring significantly fewer access points. This joint solution architecture provides organizations with a robust platform that delivers industry leading quality and the lowest total cost of ownership.

Ruckus Wireless, Inc.

880 West Maude Avenue, Suite 101, Sunnyvale, CA 94085 USA

(650) 265-4200 Ph \ (408) 738-2065 Fx

