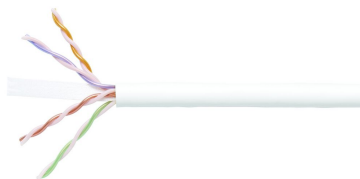


# UTG760245102 | 2071E-UTG WHT C6 4/23 U/UTP R3000



GigaSPEED XL® 2071E-UTG ETL Verified Category 6 U/UTP Cable, plenum, white jacket, 4 pair count, 3000 ft (914 m) length, reel

## Product Classification

<b>Regional Availability</b>	Asia   Australia/New Zealand   EMEA   Latin America   North America
<b>Portfolio</b>	SYSTIMAX®
<b>Product Type</b>	Twisted pair cable
<b>Product Brand</b>	GigaSPEED XL®

## General Specifications

<b>Product Number</b>	2071E-UTG
<b>ANSI/TIA Category</b>	6
<b>Cable Component Type</b>	Horizontal
<b>Cable Type</b>	U/UTP (unshielded)
<b>Conductor Type, singles</b>	Solid
<b>Conductors, quantity</b>	8
<b>Jacket Color</b>	White
<b>Pairs, quantity</b>	4
<b>Separator Type</b>	Bisector
<b>Transmission Standards</b>	ANSI/TIA-568.2-D   CENELEC EN 50288-6-1   ISO/IEC 11801 Class E   UTG-10

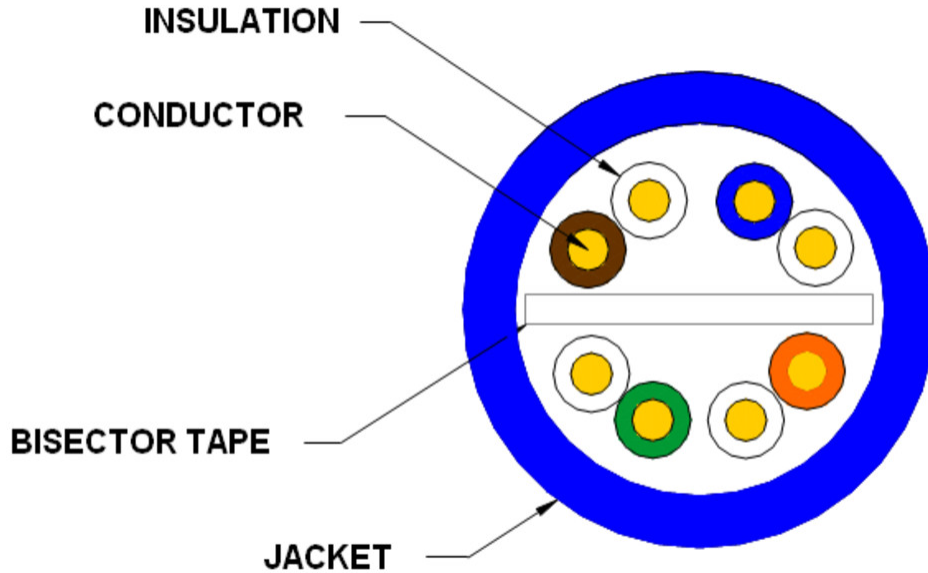
## Dimensions

<b>Cable Length</b>	914.4 m   3000 ft
<b>Cable Length Tolerance</b>	±5%
<b>Diameter Over Insulated Conductor</b>	1.016 mm   0.04 in
<b>Diameter Over Jacket, nominal</b>	5.74 mm   0.226 in
<b>Jacket Thickness</b>	0.559 mm   0.022 in

Conductor Gauge, singles

23 AWG

## Cross Section Drawing



## Electrical Specifications

<b>dc Resistance Unbalance, maximum</b>	5 %
<b>dc Resistance, maximum</b>	7.61 ohms/100 m   2.32 ohms/100 ft
<b>Dielectric Strength, minimum</b>	1500 Vac   2500 Vdc
<b>Mutual Capacitance at Frequency</b>	5.6 nF/100 m @ 1 kHz
<b>Nominal Velocity of Propagation (NVP)</b>	74 %
<b>Operating Frequency, maximum</b>	300 MHz
<b>Operating Voltage, maximum</b>	80 V
<b>Remote Powering</b>	Fully complies with the recommendations set forth by IEEE 802.3bt (Type 4) for the safe delivery of power over LAN cable when installed according to ISO/IEC 14763-2, CENELEC EN 50174-1, CENELEC EN 50174-2 or TIA TSB-184-A

## Material Specifications

<b>Conductor Material</b>	Bare copper
<b>Insulation Material</b>	FEP   Polyolefin
<b>Jacket Material</b>	PVC

# UTG760245102 | 2071E-UTG WHT C6 4/23 U/UTP R3000

---

**Separator Material** Flame retardant polyolefin

## Mechanical Specifications

**Pulling Tension, maximum** 11.34 kg | 25 lb

## Environmental Specifications

**Installation temperature** 0 °C to +60 °C (+32 °F to +140 °F)

**Operating Temperature** -20 °C to +60 °C (-4 °F to +140 °F)

**Environmental Space** Plenum

**Temperature Rating, UL** 75 °C | 167 °F

**Flame Test Method** CMP/FT6

**Smoke Test Method** CMP/FT6

## Packaging and Weights

**Cable weight** 43.157 kg/km | 29 lb/kft

**Packaging Type** Reel

## Regulatory Compliance/Certifications

### Agency

ISO 9001:2015

### Classification

Designed, manufactured and/or distributed under this quality management system

