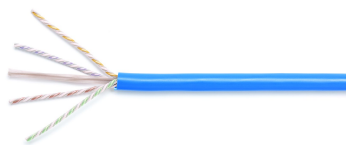


760105338 | 2091B BLU C6A 4/23 U/UTP R1000



GigaSPEED X10D® 2091B ETL Verified Category 6A U/UTP Cable, blue jacket, 4 pair count, 1000 ft (305 m) length, reel

Product Classification

Regional Availability	Asia Australia/New Zealand EMEA Latin America North America
Portfolio	SYSTIMAX®
Product Type	Twisted pair cable
Product Brand	GigaSPEED X10D®

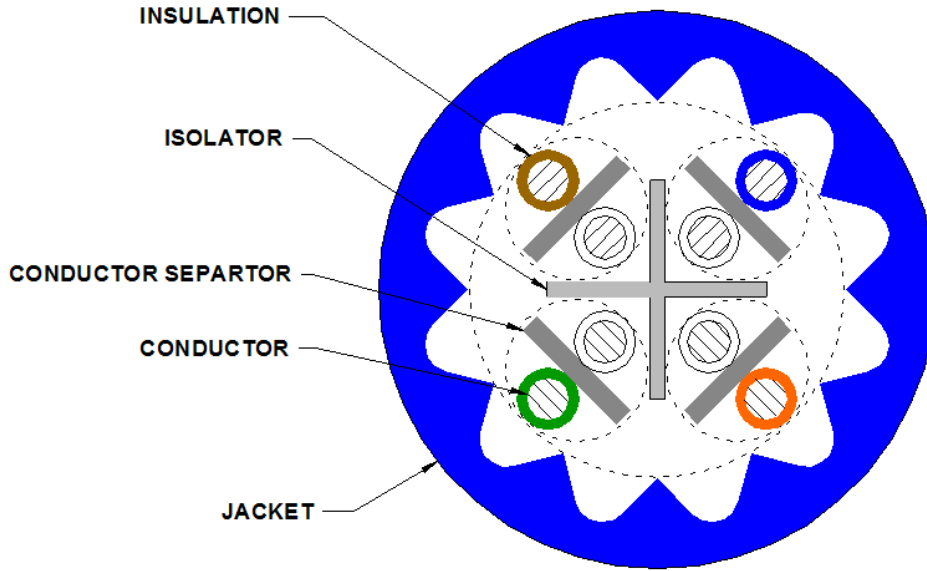
General Specifications

Product Number	2091B
ANSI/TIA Category	6A
Cable Component Type	Horizontal
Cable Type	U/UTP (unshielded)
Conductor Type, singles	Solid
Conductors, quantity	8
Jacket Color	Blue
Note	Consult ANSI/TIA-568-C.2 Annex G for length de-rating guidance for cable installation in higher temperature environments
Pairs, quantity	4
Separator Type	Isolator
Transmission Standards	ANSI/TIA-568.2-D ISO/IEC 11801 Class EA

Dimensions

Cable Length	304.8 m 1000 ft
Diameter Over Insulated Conductor	0.889 mm 0.035 in
Diameter Over Jacket, nominal	7.239 mm 0.285 in
Jacket Thickness	1.295 mm 0.051 in
Conductor Gauge, singles	23 AWG

Cross Section Drawing



Electrical Specifications

dc Resistance Unbalance, maximum	4 %
dc Resistance, maximum	7.61 ohms/100 m 2.32 ohms/100 ft
Dielectric Strength, minimum	1500 Vac 2500 Vdc
LP (Limited Power) Rating	0.6 A
Mutual Capacitance at Frequency	6.0 nF/100 m @ 1 kHz
Nominal Velocity of Propagation (NVP)	66 %
Operating Frequency, maximum	550 MHz
Operating Voltage, maximum	80 V
Remote Powering	Fully complies with the recommendations set forth by IEEE 802.3bt (Type 4) for the safe delivery of power over LAN cable when installed according to ISO/IEC 14763-2, CENELEC EN 50174-1, CENELEC EN 50174-2 or TIA TSB-184-A

Material Specifications

Conductor Material	Bare copper
Insulation Material	FEP
Jacket Material	PVC
Separator Material	FEP
Separator 2 Material	Polyolefin

760105338 | 2091B BLU C6A 4/23 U/UTP R1000

Mechanical Specifications

Pulling Tension, maximum 11.34 kg | 25 lb

Environmental Specifications

Installation temperature 0 °C to +60 °C (+32 °F to +140 °F)

Operating Temperature -20 °C to +75 °C (-4 °F to +167 °F)

Environmental Space Plenum

Temperature Rating, ETL 105 °C | 221 °F

Temperature Rating, UL 105 °C | 221 °F

Flame Test Method CMP/FT6

Safety Standard UL 444

Smoke Test Method CMP/FT6 | NFPA 262

Packaging and Weights

Cable weight 60.568 kg/km | 40.7 lb/kft

Packaging Type Reel

Regulatory Compliance/Certifications

Agency	Classification
CHINA-ROHS	Below maximum concentration value
ISO 9001:2015	Designed, manufactured and/or distributed under this quality management system
REACH-SVHC	Compliant as per SVHC revision on www.commscope.com/ProductCompliance
ROHS	Compliant
UK-ROHS	Compliant

